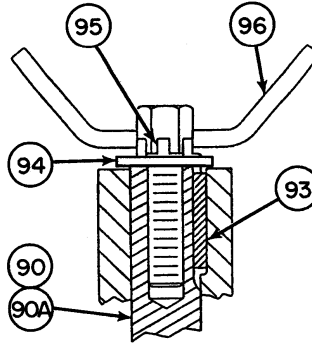
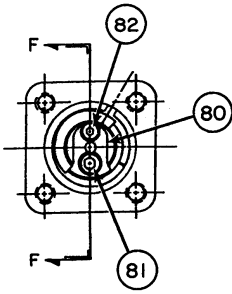


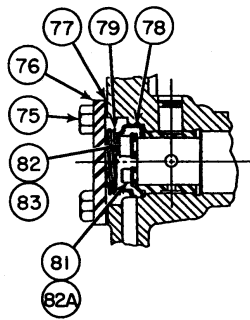
SECTION B-B



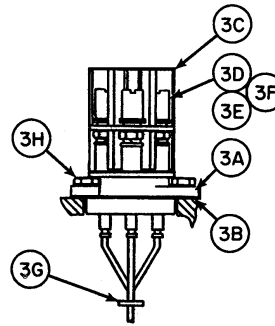
SECTION C-C



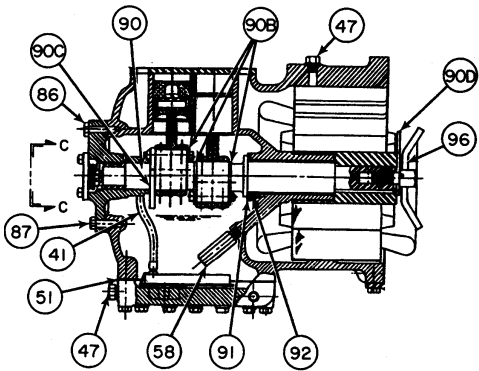
VIEW C-C



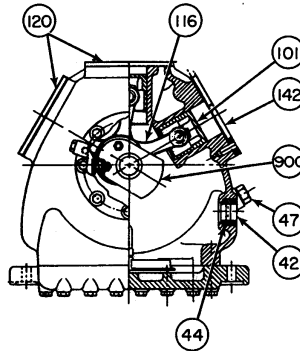
SECTION F-F



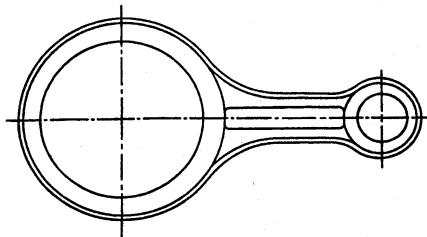
TERMINAL PLATE



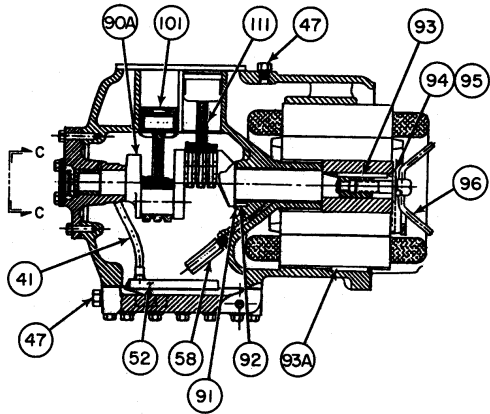
16, 18, 24, CFM  
(W/ ECCENTRIC STRAPS)  
SECTION A-A



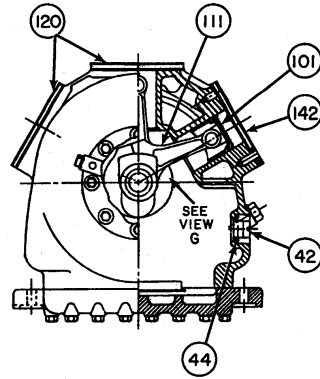
16, 18, 24, CFM  
SECTION B-B



ECCENTRIC STRAP, ITEM #116

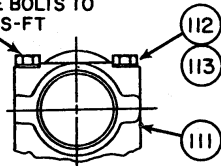


28, 37 CFM  
(W/ CONN RODS)  
SECTION A-A

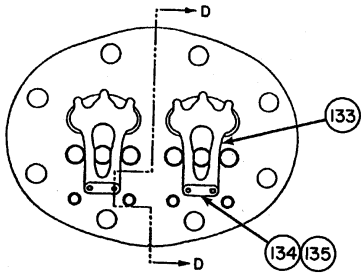


28, 37 CFM  
SECTION B-B

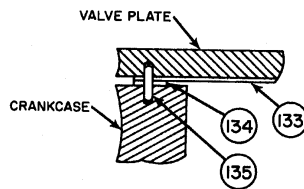
TORQUE BOLTS TO  
7-12 LBS-FT



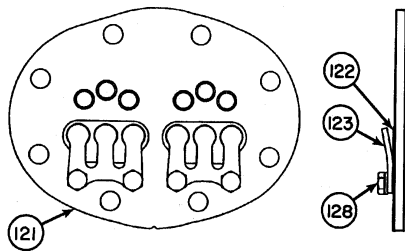
VIEW G



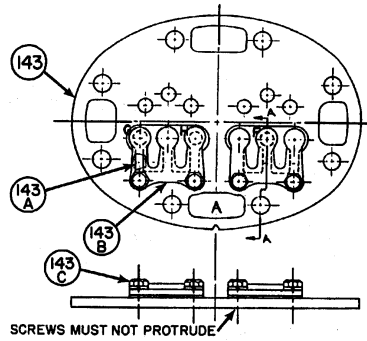
VALVE PLATE, CRANKCASE SIDE



SECTION D-D



HIGH STAGE VALVE PLATE, ITEM #142



LOW STAGE VALVE PLATE, ITEM #120