

DATE: APRIL 23, 1999

AUTHOR: PAUL TOLLAR

## Carlyle *Technical Bulletin 99T-6*



Special points of interest:

- All 06ER Models
- All 06EM Models
- 06EA 75 & 99 CFM Sizes

### New Carlyle 06E Service Valve Offering

Carlyle is introducing a new 2-1/8" brass suction service valve which can replace the existing cast iron model. This brass service valve will be slightly more expensive than the cast iron version but will avoid the potential for rust.

Customers can order the 2-1/8" new brass service valve under package 06EA660164. This package contains the new brass service valve (Part No. EN07EA510), gasket and mounting bolts and is expected to be available later this spring. Please contact your Carlyle Sales representative if you are interested in this new service valve option.

The sealing gasket will be the same for the new and old service valve. The mounting bolts for the new service

valves are longer (5" long) than those used on the cast iron version. The location of the centerline of the new valve relative to the compressor will remain the same as the current valve. There are slight dimensional changes in the new brass valve and an outline drawing is attached (Figure 1).

The existing 2-1/8" cast iron service valve (Accessory Package # 06EA660091 – Service Valve EM13FA516) will continue to be available for customers wishing to use it.

In conjunction with this change, Carlyle is also modifying the motor end blank-off pad used to seal the suction service valve opening on the above models. This new pad will allow Carlyle to increase the paint coverage in the area around this opening (Figure 2). The combination of the new brass service valve and the improved paint coverage will avoid rust in a portion of the compressor which typically "sweats or ices up".

The new shipping pad design will require the suction inlet screen to be

shipped inside the terminal box instead of inside the motor end cover. The customer should now install this screen inside the compressor motor end cover opening (location shown in Figure 2) before the service valve is installed. A sticker will be placed on the outside of the lifting lug stating "Install Suction Screen". This change will be effective on compressors built starting April 1999.

If you require additional information on this change, contact your Carlyle sales representative or the Carlyle OEM Application Engineering Department.

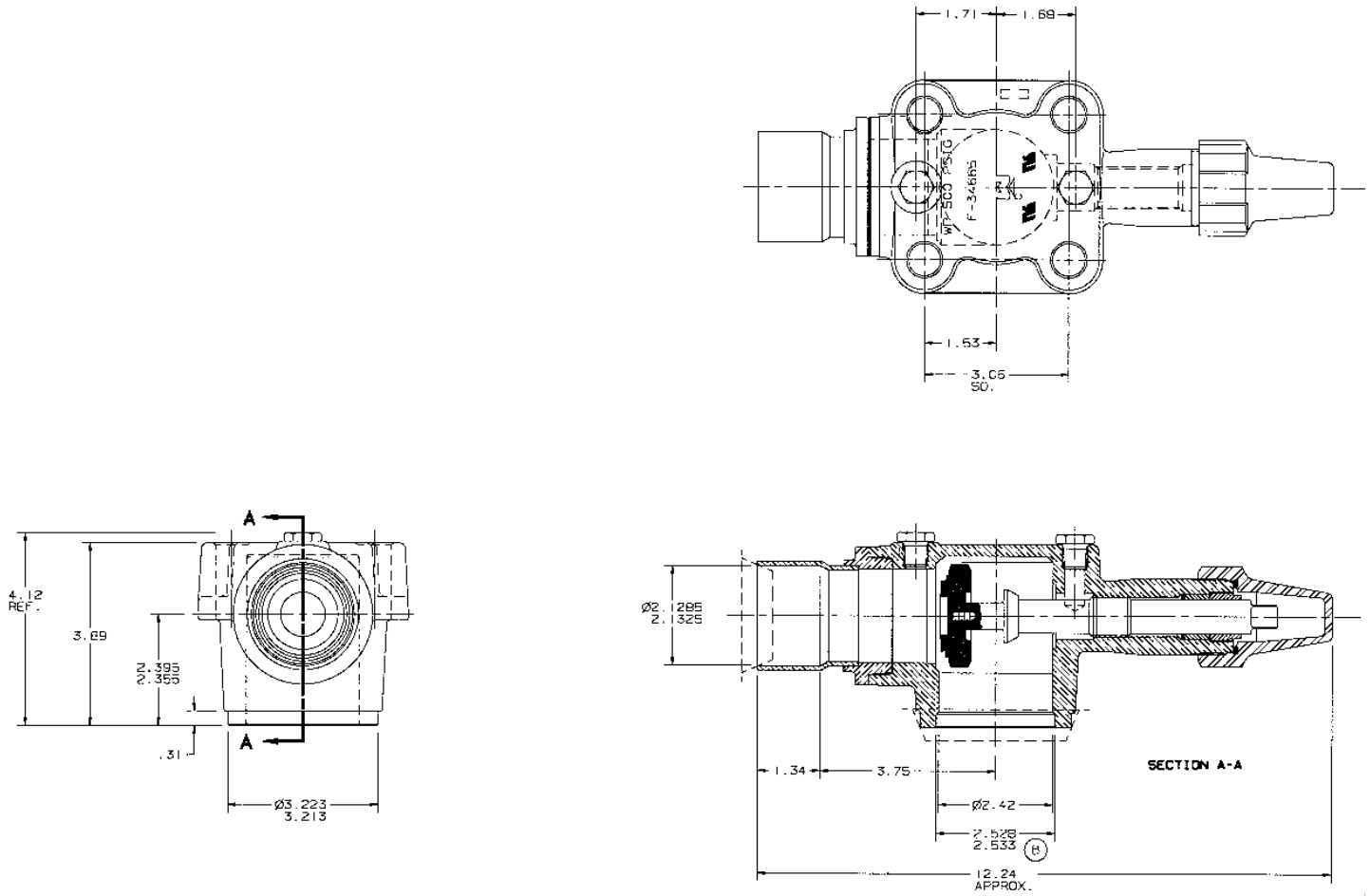
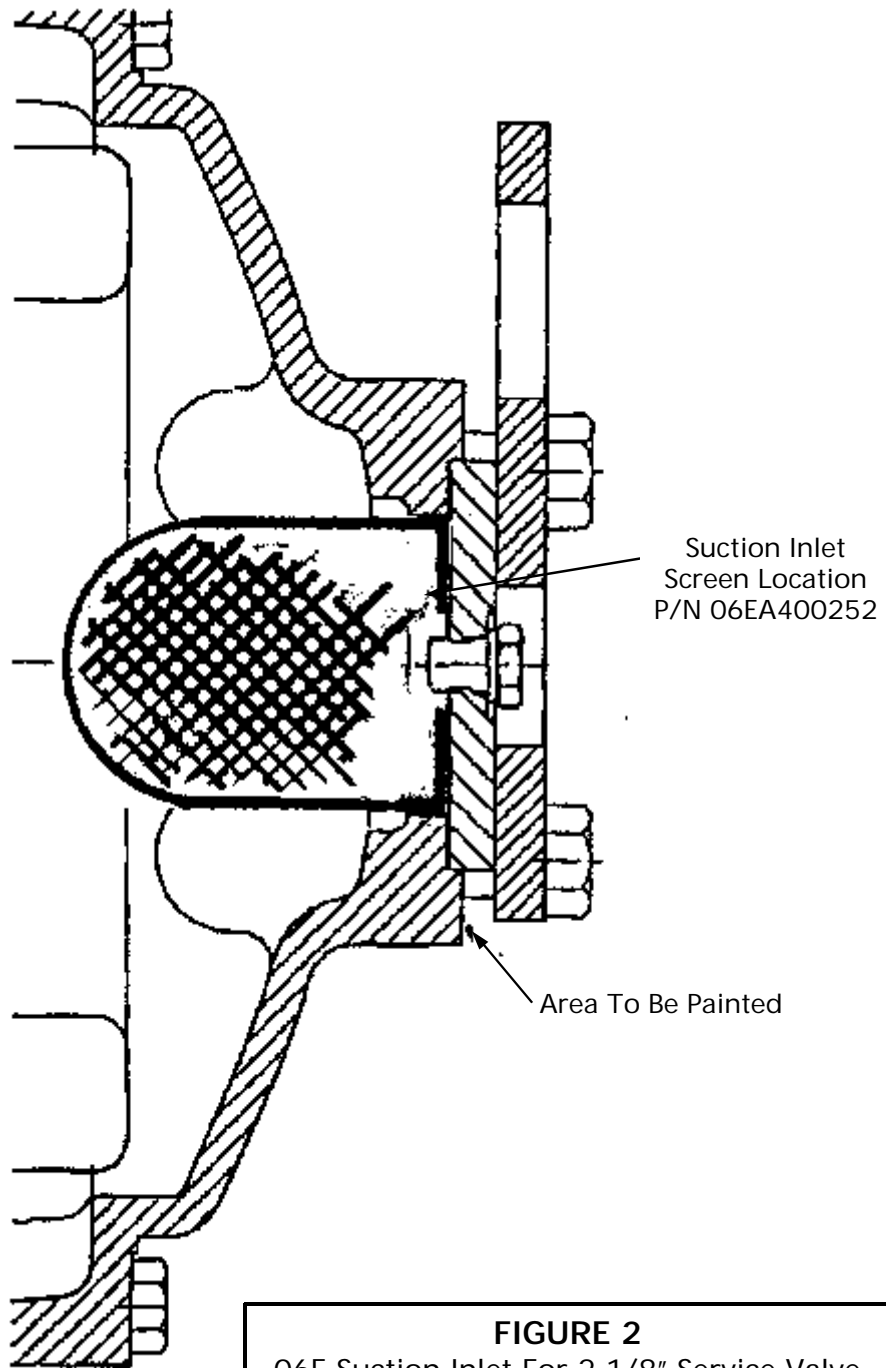


FIGURE 1



**FIGURE 2**  
O6E Suction Inlet For 2-1/8" Service Valve