

MODEL SRJ782AE

575 VOLTS, THREE PHASE, 60HZ, R-22

NOMINAL PERFORMANCE AT ASRE/T 575 VOLTS

Capacity (Btu/hr).....	78,400
EER (Btu/W-hr).....	11.8
Power(W).....	6635
Current(A).....	9.3

RATING CONDITIONS AT ASRE/T

Condensing Temp.(Deg. F).....	130
Evaporating Temp.(Deg. F).....	45
Return Gas Temp.(Deg. F).....	95
Liquid Temp.(Deg. F).....	115
Ambient Temp.(Deg. F).....	95

MOTOR

Operating Voltage Range.....	518-632
Locked Rotor Amps.....	73.0
Maximum Continuous Current.....	14.5
Rated Load Amps.....	9.0

ELECTRICAL COMPONENTS

Motor Protector Type.....	Internal
Run Capacitor Type.....	N/A

OIL

Oil Type.....	Sontex SA32 w/ 1.5% SYN-O-AD
Initial Charge (oz).....	72
Re-Charge (oz).....	63

COMPRESSOR

Maximum Discharge Temp. (Deg. F).....	280
Displacement (cu. in / rev).....	6.35
Weight (lbs.,Wet).....	95.0
UL/CSA File #.....	SA11565

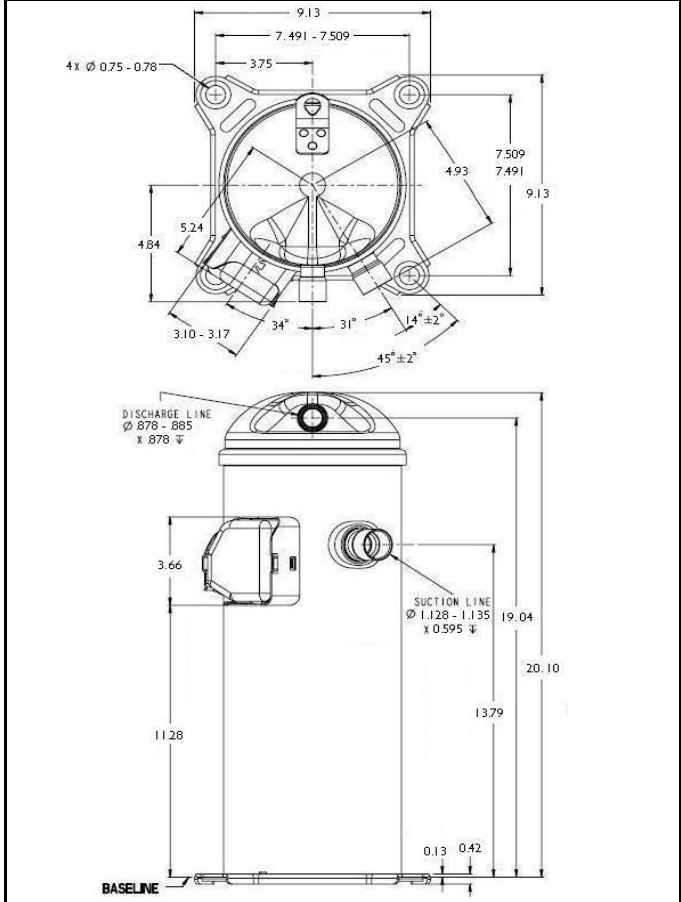
Specifications are subject to change without notice
 Nominal performance value +/- 5%
 Ratings generated with air over compressor

Carlyle Compressor Company

In the U.S.A. and Puerto Rico: 1-800-GO-CARLYLE (1-800-462-2759)
 Canada: 1-800-258-1123
 Mexico: 001-800-462-2759
 Fax: 315-432-3274

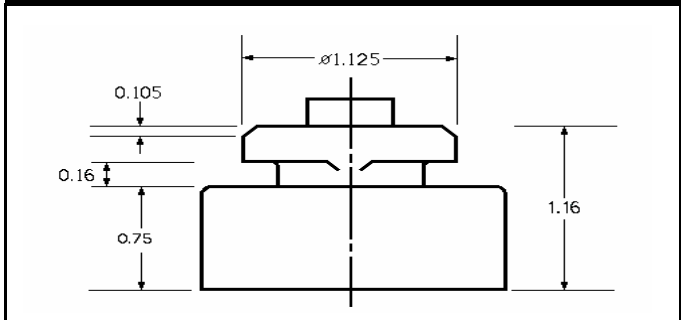
78400 Btu/hr

SR MODEL OUTLINE DIMENSIONS



Dimensions given in inches

ISOLATOR MOUNTING DIAGRAM



MODEL: SRJ782AE **SUBCOOLING:** 15' F
VOLTAGE: 575-3-60 **SUPERHEAT:** 20' F
REFRIGERANT: R-22 **RATING DATE:** Aug-06



Saturated Condensing Temperature (Degrees F)		Saturated Evaporating Temperature (Degrees F)															
		-20	-15	-10	-5	0	5	10	15	20	25	30	35	40	45	50	55
80	Capacity (Btu/hr)	27900	29200	31300	34200	37800	42200	47200	52900	59200	66200	73700	81800	90400	99500	109100	119100
	Power (Watts)	3740	3780	3810	3830	3850	3860	3860	3850	3830	3800	3750	3690	3610	3520	3410	3280
	Current (Amps)	5.3	5.4	5.5	5.5	5.6	5.6	5.7	5.7	5.7	5.7	5.7	5.7	5.7	5.7	5.7	5.6
	Flow Rate (lbs/hr)	360	376	401	436	479	531	590	657	731	812	900	993	1091	1195	1304	1417
	EER (Btu/Watt-hr)	7.5	7.7	8.2	8.9	9.8	10.9	12.2	13.7	15.5	17.4	19.6	22.2	25.0	28.3	32.0	36.3
90	Capacity (Btu/hr)		27700	29700	32500	36100	40200	45100	50500	56500	63100	70300	77900	86100	94700	103700	113100
	Power (Watts)		4300	4310	4330	4340	4340	4340	4330	4310	4280	4240	4190	4120	4050	3950	
	Current (Amps)		5.8	5.8	5.9	5.9	6.0	6.0	6.0	6.0	6.0	6.0	6.0	6.0	6.0	6.0	6.0
	Flow Rate (lbs/hr)		370	396	431	475	526	585	651	724	804	889	980	1076	1177	1282	1391
	EER (Btu/Watt-hr)		6.4	6.9	7.5	8.3	9.3	10.4	11.6	13.1	14.7	16.4	18.4	20.6	23.0	25.6	28.6
100	Capacity (Btu/hr)			27700	30500	34000	38100	42800	48100	53900	60300	67100	74400	82200	90300	98900	107800
	Power (Watts)			4870	4870	4860	4860	4850	4840	4830	4820	4800	4780	4740	4700	4650	4590
	Current (Amps)			6.4	6.4	6.5	6.5	6.5	6.5	6.5	6.5	6.5	6.5	6.5	6.5	6.5	6.5
	Flow Rate (lbs/hr)			384	421	466	519	579	645	718	797	882	972	1066	1165	1268	1375
	EER (Btu/Watt-hr)			5.7	6.3	7.0	7.8	8.8	9.9	11.2	12.5	14.0	15.6	17.3	19.2	21.3	23.5
110	Capacity (Btu/hr)					31400	35500	40200	45400	51100	57300	63900	70900	78400	86200	94300	102800
	Power (Watts)					5460	5440	5420	5400	5380	5370	5350	5340	5310	5290	5260	5230
	Current (Amps)					7.2	7.2	7.2	7.2	7.2	7.2	7.2	7.2	7.2	7.2	7.2	7.2
	Flow Rate (lbs/hr)					450	505	567	635	710	790	875	965	1060	1158	1260	1366
	EER (Btu/Watt-hr)					5.8	6.5	7.4	8.4	9.5	10.7	11.9	13.3	14.7	16.3	17.9	19.7
120	Capacity (Btu/hr)									37000	42200	47800	53900	60400	67300	74500	82000
	Power (Watts)									6080	6040	6010	5990	5970	5950	5940	5920
	Current (Amps)									8.1	8.1	8.1	8.1	8.1	8.1	8.1	8.1
	Flow Rate (lbs/hr)									546	617	694	777	864	956	1052	1151
	EER (Btu/Watt-hr)									6.1	7.0	8.0	9.0	10.1	11.3	12.5	13.9
130	Capacity (Btu/hr)																
	Power (Watts)									43900	50000	56400	63200	70300	77600	85200	93100
	Current (Amps)									6760	6720	6690	6660	6640	6630	6620	6610
	Flow Rate (lbs/hr)									9.2	9.2	9.2	9.1	9.1	9.2	9.2	9.2
	EER (Btu/Watt-hr)									6.5	7.4	8.4	9.5	10.6	11.7	12.9	14.1
140	Capacity (Btu/hr)																
	Power (Watts)																
	Current (Amps)																
	Flow Rate (lbs/hr)																
	EER (Btu/Watt-hr)																
150	Capacity (Btu/hr)																
	Power (Watts)																
	Current (Amps)																
	Flow Rate (lbs/hr)																
	EER (Btu/Watt-hr)																

* Specifications are subject to change without notice

Data Based on 575 volts

MODEL SRJ782AU

575 VOLTS, THREE PHASE, 60HZ, R-22

NOMINAL PERFORMANCE AT ASRE/T 575 VOLTS

Capacity (Btu/hr).....	78,400
EER (Btu/W-hr).....	11.8
Power(W).....	6635
Current(A).....	9.3

RATING CONDITIONS AT ASRE/T

Condensing Temp.(Deg. F).....	130
Evaporating Temp.(Deg. F).....	45
Return Gas Temp.(Deg. F).....	95
Liquid Temp.(Deg. F).....	115
Ambient Temp.(Deg. F).....	95

MOTOR

Operating Voltage Range.....	518-632
Locked Rotor Amps.....	73.0
Maximum Continuous Current.....	14.5
Rated Load Amps.....	9.0

ELECTRICAL COMPONENTS

Motor Protector Type.....	Internal
Run Capacitor Type.....	N/A

OIL

Oil Type.....	Sontex SA32 w/ 1.5% SYN-O-AD
Initial Charge (oz).....	72
Re-Charge (oz).....	63

COMPRESSOR

Maximum Discharge Temp. (Deg. F).....	280
Displacement (cu. in / rev).....	6.35
Weight (lbs.,Wet).....	95.0
UL/CSA File #.....	SA11565

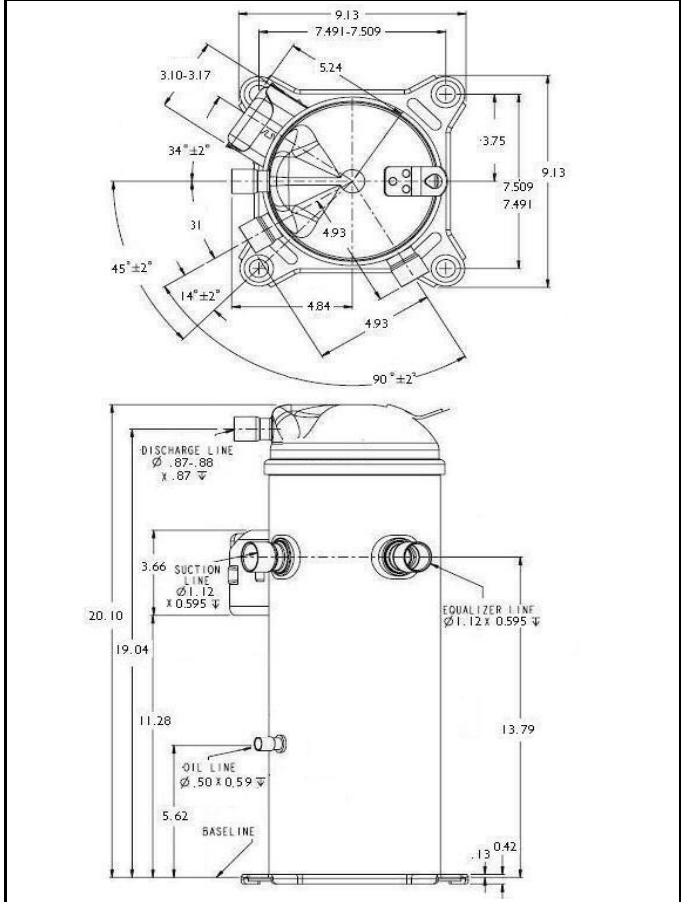
Specifications are subject to change without notice
 Nominal performance value +/- 5%
 Ratings generated with air over compressor

Carlyle Compressor Company

In the U.S.A. and Puerto Rico: 1-800-GO-CARLYLE (1-800-462-2759)
 Canada: 1-800-258-1123
 Mexico: 001-800-462-2759
 Fax: 315-432-3274

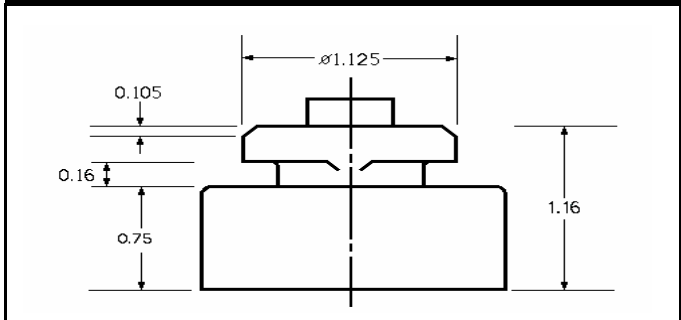
78400 Btu/hr

SR MODEL OUTLINE DIMENSIONS



Dimensions given in inches

ISOLATOR MOUNTING DIAGRAM



MODEL: SRJ782AU **SUBCOOLING:** 15' F
VOLTAGE: 575-3-60 **SUPERHEAT:** 20' F
REFRIGERANT: R-22 **RATING DATE:** Aug-06



Saturated Condensing Temperature (Degrees F)		Saturated Evaporating Temperature (Degrees F)															
		-20	-15	-10	-5	0	5	10	15	20	25	30	35	40	45	50	55
80	Capacity (Btu/hr)	27900	29200	31300	34200	37800	42200	47200	52900	59200	66200	73700	81800	90400	99500	109100	119100
	Power (Watts)	3740	3780	3810	3830	3850	3860	3860	3850	3830	3800	3750	3690	3610	3520	3410	3280
	Current (Amps)	5.3	5.4	5.5	5.5	5.6	5.6	5.7	5.7	5.7	5.7	5.7	5.7	5.7	5.7	5.7	5.6
	Flow Rate (lbs/hr)	360	376	401	436	479	531	590	657	731	812	900	993	1091	1195	1304	1417
	EER (Btu/Watt-hr)	7.5	7.7	8.2	8.9	9.8	10.9	12.2	13.7	15.5	17.4	19.6	22.2	25.0	28.3	32.0	36.3
90	Capacity (Btu/hr)		27700	29700	32500	36100	40200	45100	50500	56500	63100	70300	77900	86100	94700	103700	113100
	Power (Watts)		4300	4310	4330	4340	4340	4340	4340	4330	4310	4280	4240	4190	4120	4050	3950
	Current (Amps)		5.8	5.8	5.9	5.9	6.0	6.0	6.0	6.0	6.0	6.0	6.0	6.0	6.0	6.0	6.0
	Flow Rate (lbs/hr)		370	396	431	475	526	585	651	724	804	889	980	1076	1177	1282	1391
	EER (Btu/Watt-hr)		6.4	6.9	7.5	8.3	9.3	10.4	11.6	13.1	14.7	16.4	18.4	20.6	23.0	25.6	28.6
100	Capacity (Btu/hr)			27700	30500	34000	38100	42800	48100	53900	60300	67100	74400	82200	90300	98900	107800
	Power (Watts)			4870	4870	4860	4860	4850	4840	4830	4820	4800	4780	4740	4700	4650	4590
	Current (Amps)			6.4	6.4	6.5	6.5	6.5	6.5	6.5	6.5	6.5	6.5	6.5	6.5	6.5	6.5
	Flow Rate (lbs/hr)			384	421	466	519	579	645	718	797	882	972	1066	1165	1268	1375
	EER (Btu/Watt-hr)			5.7	6.3	7.0	7.8	8.8	9.9	11.2	12.5	14.0	15.6	17.3	19.2	21.3	23.5
110	Capacity (Btu/hr)					31400	35500	40200	45400	51100	57300	63900	70900	78400	86200	94300	102800
	Power (Watts)					5460	5440	5420	5400	5380	5370	5350	5340	5310	5290	5260	5230
	Current (Amps)					7.2	7.2	7.2	7.2	7.2	7.2	7.2	7.2	7.2	7.2	7.2	7.2
	Flow Rate (lbs/hr)					450	505	567	635	710	790	875	965	1060	1158	1260	1366
	EER (Btu/Watt-hr)					5.8	6.5	7.4	8.4	9.5	10.7	11.9	13.3	14.7	16.3	17.9	19.7
120	Capacity (Btu/hr)									37000	42200	47800	53900	60400	67300	74500	82000
	Power (Watts)									6080	6040	6010	5990	5970	5950	5940	5920
	Current (Amps)									8.1	8.1	8.1	8.1	8.1	8.1	8.1	8.1
	Flow Rate (lbs/hr)									546	617	694	777	864	956	1052	1151
	EER (Btu/Watt-hr)									6.1	7.0	8.0	9.0	10.1	11.3	12.5	13.9
130	Capacity (Btu/hr)																
	Power (Watts)									43900	50000	56400	63200	70300	77600	85200	93100
	Current (Amps)									6760	6720	6690	6660	6640	6630	6620	6610
	Flow Rate (lbs/hr)									9.2	9.2	9.2	9.1	9.1	9.2	9.2	9.2
	EER (Btu/Watt-hr)									6.5	7.4	8.4	9.5	10.6	11.7	12.9	14.1
140	Capacity (Btu/hr)																
	Power (Watts)																
	Current (Amps)																
	Flow Rate (lbs/hr)																
	EER (Btu/Watt-hr)																
150	Capacity (Btu/hr)																
	Power (Watts)																
	Current (Amps)																
	Flow Rate (lbs/hr)																
	EER (Btu/Watt-hr)																

* Specifications are subject to change without notice

Data Based on 575 volts

MODEL SRJ812AE

575 VOLTS, THREE PHASE, 60HZ, R-22

NOMINAL PERFORMANCE AT ASRE/T 575 VOLTS

Capacity (Btu/hr).....	82,400
EER (Btu/W-hr).....	11.8
Power(W).....	6975
Current(A).....	9.3

RATING CONDITIONS AT ASRE/T

Condensing Temp.(Deg. F).....	130
Evaporating Temp.(Deg. F).....	45
Return Gas Temp.(Deg. F).....	95
Liquid Temp.(Deg. F).....	115
Ambient Temp.(Deg. F).....	95

MOTOR

Operating Voltage Range.....	518-632
Locked Rotor Amps.....	73.0
Maximum Continuous Current.....	14.5
Rated Load Amps.....	9.0

ELECTRICAL COMPONENTS

Motor Protector Type.....	Internal
Run Capacitor Type.....	N/A

OIL

Oil Type.....	Sontex SA32 w/ 1.5% SYN-O-AD
Initial Charge (oz).....	80
Re-Charge (oz).....	71

COMPRESSOR

Maximum Discharge Temp. (Deg. F).....	280
Displacement (cu. in / rev).....	6.62
Weight (lbs.,Wet).....	95.0
UL/CSA File #.....	SA11565

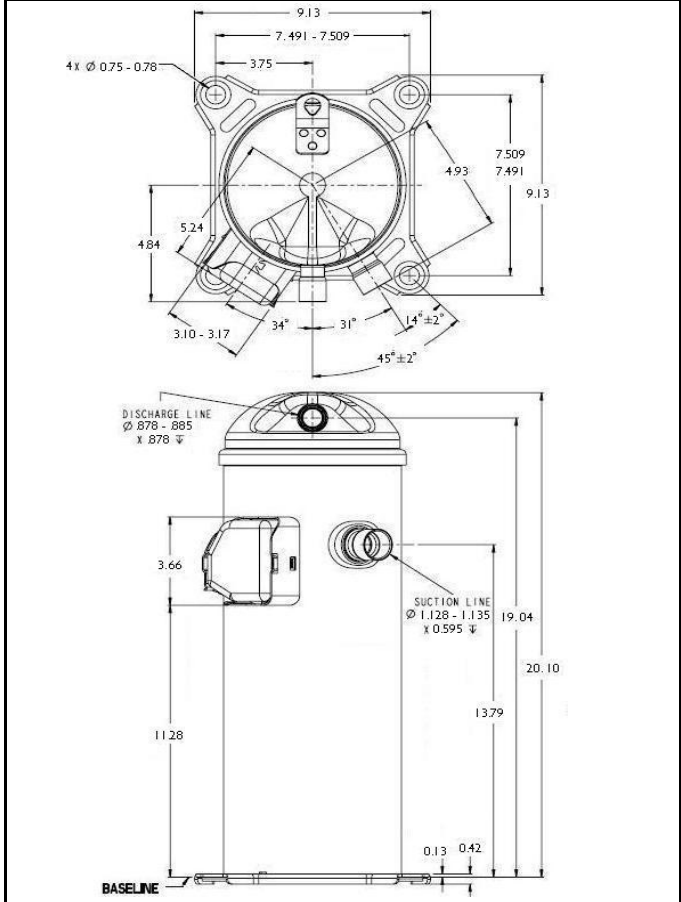
Specifications are subject to change without notice
 Nominal performance value +/- 5%
 Ratings generated with air over compressor

Carlyle Compressor Company

In the U.S.A. and Puerto Rico: 1-800-GO-CARLYLE (1-800-462-2759)
 Canada: 1-800-258-1123
 Mexico: 001-800-462-2759
 Fax: 315-432-3274

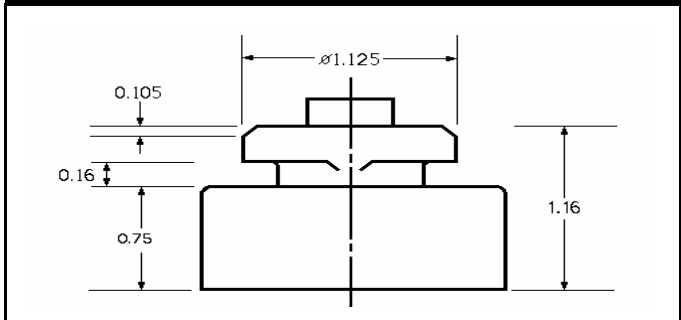
82400 Btu/hr

SR MODEL OUTLINE DIMENSIONS



Dimensions given in inches

ISOLATOR MOUNTING DIAGRAM



MODEL: SRJ812AE **SUBCOOLING:** 15' F
VOLTAGE: 575-3-60 **SUPERHEAT:** 20' F
REFRIGERANT: R-22 **RATING DATE:** Aug-06



Saturated Condensing Temperature (Degrees F)		Saturated Evaporating Temperature (Degrees F)															
		-20	-15	-10	-5	0	5	10	15	20	25	30	35	40	45	50	55
80	Capacity (Btu/hr)	29500	30900	33200	36200	40100	44700	50000	56000	62700	70100	78000	86600	95700	105300	115500	126100
	Power (Watts)	4020	4060	4090	4120	4140	4150	4150	4140	4120	4080	4030	3960	3880	3780	3670	3530
	Current (Amps)	5.3	5.4	5.5	5.5	5.6	5.6	5.7	5.7	5.7	5.7	5.7	5.7	5.7	5.7	5.7	5.6
	Flow Rate (lbs/hr)	381	398	425	461	507	562	625	696	774	860	952	1051	1156	1266	1381	1500
	EER (Btu/Watt-hr)	7.4	7.6	8.1	8.8	9.7	10.8	12.0	13.5	15.2	17.2	19.4	21.8	24.6	27.8	31.5	35.7
90	Capacity (Btu/hr)		29200	31400	34400	38100	42600	47700	53400	59800	66800	74300	82400	91000	100100	109700	119700
	Power (Watts)		4600	4620	4640	4650	4650	4650	4650	4640	4610	4580	4540	4490	4420	4340	4240
	Current (Amps)		5.8	5.8	5.9	5.9	6.0	6.0	6.0	6.0	6.0	6.0	6.0	6.0	6.0	6.0	6.0
	Flow Rate (lbs/hr)		391	419	456	502	557	619	689	766	850	940	1036	1138	1245	1356	1471
	EER (Btu/Watt-hr)		6.4	6.8	7.4	8.2	9.1	10.2	11.5	12.9	14.5	16.2	18.2	20.3	22.7	25.3	28.2
100	Capacity (Btu/hr)			29200	32200	35900	40200	45200	50800	56900	63700	70900	78600	86800	95400	104400	113900
	Power (Watts)			5200	5190	5190	5180	5180	5170	5160	5140	5120	5100	5060	5020	4970	4900
	Current (Amps)			6.4	6.4	6.5	6.5	6.5	6.5	6.5	6.5	6.5	6.5	6.5	6.5	6.5	6.5
	Flow Rate (lbs/hr)			405	445	492	548	611	682	759	842	932	1027	1127	1231	1340	1453
	EER (Btu/Watt-hr)			5.6	6.2	6.9	7.8	8.7	9.8	11.0	12.4	13.8	15.4	17.1	19.0	21.0	23.2
110	Capacity (Btu/hr)					33100	37500	42400	47900	53900	60400	67400	74800	82700	90900	99500	108500
	Power (Watts)					5800	5780	5760	5740	5720	5710	5690	5670	5650	5620	5590	5550
	Current (Amps)					7.2	7.2	7.2	7.2	7.2	7.2	7.2	7.2	7.2	7.2	7.2	7.2
	Flow Rate (lbs/hr)					474	532	598	670	749	833	923	1018	1118	1222	1329	1441
	EER (Btu/Watt-hr)					5.7	6.5	7.4	8.3	9.4	10.6	11.8	13.2	14.6	16.2	17.8	19.5
120	Capacity (Btu/hr)									38900	44400	50400	56800	63600	70900	78500	86400
	Power (Watts)									6420	6390	6360	6330	6310	6290	6280	6260
	Current (Amps)									8.1	8.1	8.1	8.1	8.1	8.1	8.1	8.1
	Flow Rate (lbs/hr)									575	650	731	818	910	1007	1107	1212
	EER (Btu/Watt-hr)									6.1	7.0	7.9	9.0	10.1	11.3	12.5	13.8
130	Capacity (Btu/hr)										46100	52500	59300	66400	73900	81600	89600
	Power (Watts)										7100	7060	7030	7010	6990	6970	6950
	Current (Amps)										9.2	9.2	9.2	9.1	9.1	9.2	9.2
	Flow Rate (lbs/hr)										703	794	889	989	1092	1199	1308
	EER (Btu/Watt-hr)										6.5	7.4	8.4	9.5	10.6	11.7	12.9
140	Capacity (Btu/hr)											54200	61300	68700	76300	84100	92200
	Power (Watts)											7880	7840	7810	7790	7780	7770
	Current (Amps)											10.5	10.4	10.4	10.4	10.5	10.5
	Flow Rate (lbs/hr)											856	960	1067	1178	1290	1405
	EER (Btu/Watt-hr)											6.9	7.8	8.8	9.8	10.8	11.9
150	Capacity (Btu/hr)													62600	70200	77900	85800
	Power (Watts)													8780	8750	8730	8720
	Current (Amps)													12.0	12.0	12.0	12.0
	Flow Rate (lbs/hr)													1030	1145	1262	1381
	EER (Btu/Watt-hr)													7.1	8.0	8.9	9.8

* Specifications are subject to change without notice

Data Based on 575 volts

MODEL SRJ812AU

575 VOLTS, THREE PHASE, 60HZ, R-22

NOMINAL PERFORMANCE AT ASRE/T 575 VOLTS

Capacity (Btu/hr).....	82,400
EER (Btu/W-hr).....	11.8
Power(W).....	6975
Current(A).....	9.3

RATING CONDITIONS AT ASRE/T

Condensing Temp.(Deg. F).....	130
Evaporating Temp.(Deg. F).....	45
Return Gas Temp.(Deg. F).....	95
Liquid Temp.(Deg. F).....	115
Ambient Temp.(Deg. F).....	95

MOTOR

Operating Voltage Range.....	518-632
Locked Rotor Amps.....	73.0
Maximum Continuous Current.....	14.5
Rated Load Amps.....	9.0

ELECTRICAL COMPONENTS

Motor Protector Type.....	Internal
Run Capacitor Type.....	N/A

OIL

Oil Type.....	Sontex SA32 w/ 1.5% SYN-O-AD
Initial Charge (oz).....	80
Re-Charge (oz).....	71

COMPRESSOR

Maximum Discharge Temp. (Deg. F).....	280
Displacement (cu. in / rev).....	6.62
Weight (lbs.,Wet).....	95.0
UL/CSA File #.....	SA11565

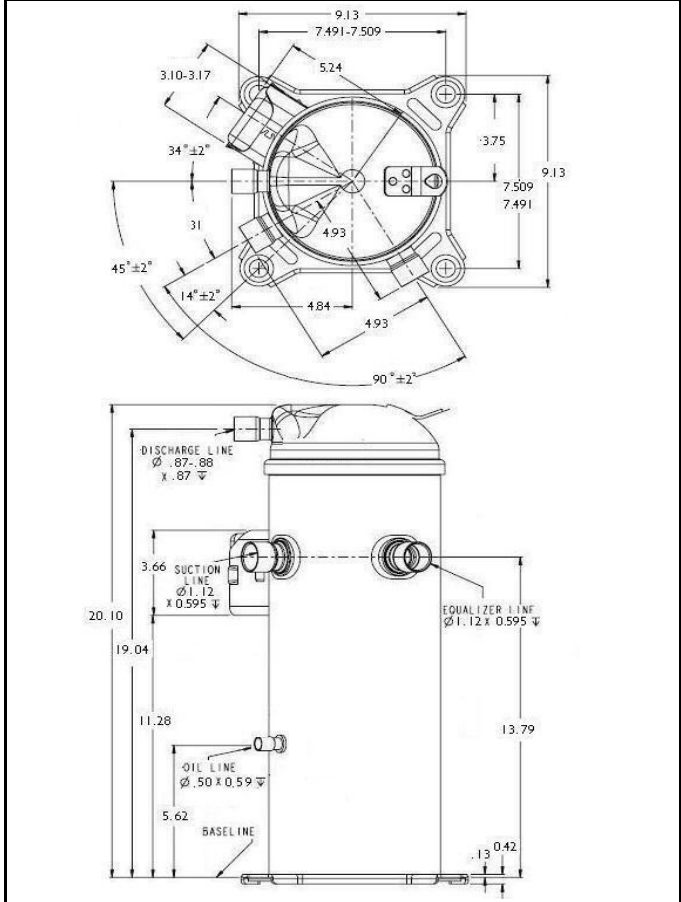
Specifications are subject to change without notice
 Nominal performance value +/- 5%
 Ratings generated with air over compressor

Carlyle Compressor Company

In the U.S.A. and Puerto Rico: 1-800-GO-CARLYLE (1-800-462-2759)
 Canada: 1-800-258-1123
 Mexico: 001-800-462-2759
 Fax: 315-432-3274

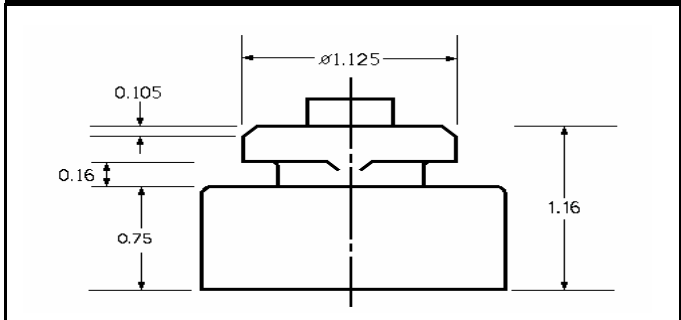
82400 Btu/hr

SR MODEL OUTLINE DIMENSIONS



Dimensions given in inches

ISOLATOR MOUNTING DIAGRAM



MODEL: SRJ812AU **SUBCOOLING:** 15' F
VOLTAGE: 575-3-60 **SUPERHEAT:** 20' F
REFRIGERANT: R-22 **RATING DATE:** Aug-06



Saturated Condensing Temperature (Degrees F)		Saturated Evaporating Temperature (Degrees F)															
		-20	-15	-10	-5	0	5	10	15	20	25	30	35	40	45	50	55
80	Capacity (Btu/hr)	29500	30900	33200	36200	40100	44700	50000	56000	62700	70100	78000	86600	95700	105300	115500	126100
	Power (Watts)	4020	4060	4090	4120	4140	4150	4150	4140	4120	4080	4030	3960	3880	3780	3670	3530
	Current (Amps)	5.3	5.4	5.5	5.5	5.6	5.6	5.7	5.7	5.7	5.7	5.7	5.7	5.7	5.7	5.7	5.6
	Flow Rate (lbs/hr)	381	398	425	461	507	562	625	696	774	860	952	1051	1156	1266	1381	1500
	EER (Btu/Watt-hr)	7.4	7.6	8.1	8.8	9.7	10.8	12.0	13.5	15.2	17.2	19.4	21.8	24.6	27.8	31.5	35.7
90	Capacity (Btu/hr)		29200	31400	34400	38100	42600	47700	53400	59800	66800	74300	82400	91000	100100	109700	119700
	Power (Watts)		4600	4620	4640	4650	4650	4650	4650	4640	4610	4580	4540	4490	4420	4340	4240
	Current (Amps)		5.8	5.8	5.9	5.9	6.0	6.0	6.0	6.0	6.0	6.0	6.0	6.0	6.0	6.0	6.0
	Flow Rate (lbs/hr)		391	419	456	502	557	619	689	766	850	940	1036	1138	1245	1356	1471
	EER (Btu/Watt-hr)		6.4	6.8	7.4	8.2	9.1	10.2	11.5	12.9	14.5	16.2	18.2	20.3	22.7	25.3	28.2
100	Capacity (Btu/hr)			29200	32200	35900	40200	45200	50800	56900	63700	70900	78600	86800	95400	104400	113900
	Power (Watts)			5200	5190	5190	5180	5180	5170	5160	5140	5120	5100	5060	5020	4970	4900
	Current (Amps)			6.4	6.4	6.5	6.5	6.5	6.5	6.5	6.5	6.5	6.5	6.5	6.5	6.5	6.5
	Flow Rate (lbs/hr)			405	445	492	548	611	682	759	842	932	1027	1127	1231	1340	1453
	EER (Btu/Watt-hr)			5.6	6.2	6.9	7.8	8.7	9.8	11.0	12.4	13.8	15.4	17.1	19.0	21.0	23.2
110	Capacity (Btu/hr)					33100	37500	42400	47900	53900	60400	67400	74800	82700	90900	99500	108500
	Power (Watts)					5800	5780	5760	5740	5720	5710	5690	5670	5650	5620	5590	5550
	Current (Amps)					7.2	7.2	7.2	7.2	7.2	7.2	7.2	7.2	7.2	7.2	7.2	7.2
	Flow Rate (lbs/hr)					474	532	598	670	749	833	923	1018	1118	1222	1329	1441
	EER (Btu/Watt-hr)					5.7	6.5	7.4	8.3	9.4	10.6	11.8	13.2	14.6	16.2	17.8	19.5
120	Capacity (Btu/hr)							38900	44400	50400	56800	63600	70900	78500	86400	94700	103200
	Power (Watts)							6420	6390	6360	6330	6310	6290	6280	6260	6240	6220
	Current (Amps)							8.1	8.1	8.1	8.1	8.1	8.1	8.1	8.1	8.1	8.1
	Flow Rate (lbs/hr)							575	650	731	818	910	1007	1107	1212	1320	1431
	EER (Btu/Watt-hr)							6.1	7.0	7.9	9.0	10.1	11.3	12.5	13.8	15.2	16.6
130	Capacity (Btu/hr)									46100	52500	59300	66400	73900	81600	89600	97900
	Power (Watts)									7100	7060	7030	7010	6990	6970	6960	6950
	Current (Amps)									9.2	9.2	9.2	9.1	9.1	9.2	9.2	9.2
	Flow Rate (lbs/hr)									703	794	889	989	1092	1199	1308	1421
	EER (Btu/Watt-hr)									6.5	7.4	8.4	9.5	10.6	11.7	12.9	14.1
140	Capacity (Btu/hr)											54200	61300	68700	76300	84100	92200
	Power (Watts)											7880	7840	7810	7790	7780	7770
	Current (Amps)											10.5	10.4	10.4	10.4	10.5	10.5
	Flow Rate (lbs/hr)											856	960	1067	1178	1290	1405
	EER (Btu/Watt-hr)											6.9	7.8	8.8	9.8	10.8	11.9
150	Capacity (Btu/hr)													62600	70200	77900	85800
	Power (Watts)													8780	8750	8730	8720
	Current (Amps)													12.0	12.0	12.0	12.0
	Flow Rate (lbs/hr)													1030	1145	1262	1381
	EER (Btu/Watt-hr)													7.1	8.0	8.9	9.8

* Specifications are subject to change without notice

Data Based on 575 volts

MODEL: SRJ942AE **SUBCOOLING:** 15' F
VOLTAGE: 575-3-60 **SUPERHEAT:** 20' F
REFRIGERANT: R-22 **RATING DATE:** Aug-06



Saturated Condensing Temperature (Degrees F)		Saturated Evaporating Temperature (Degrees F)															
		-20	-15	-10	-5	0	5	10	15	20	25	30	35	40	45	50	55
80	Capacity (Btu/hr)	34400	36000	38700	42200	46700	52100	58300	65300	73100	81700	91000	100900	111600	122800	134700	147100
	Power (Watts)	4790	4840	4880	4910	4940	4950	4950	4930	4900	4860	4800	4720	4630	4520	4380	4230
	Current (Amps)	6.2	6.3	6.4	6.5	6.5	6.6	6.6	6.7	6.7	6.7	6.7	6.7	6.7	6.6	6.6	6.6
	Flow Rate (lbs/hr)	444	464	495	538	591	655	728	811	903	1002	1110	1225	1347	1476	1610	1750
	EER (Btu/Watt-hr)	7.2	7.5	7.9	8.6	9.5	10.5	11.8	13.2	14.9	16.8	18.9	21.4	24.1	27.2	30.7	34.8
90	Capacity (Btu/hr)		34000	36600	40100	44400	49600	55500	62200	69700	77800	86600	96000	106100	116700	127800	139400
	Power (Watts)		5460	5480	5500	5520	5530	5530	5520	5510	5480	5440	5390	5330	5250	5160	5050
	Current (Amps)		6.8	6.8	6.9	6.9	7.0	7.0	7.0	7.0	7.0	7.0	7.0	7.0	7.0	7.0	7.0
	Flow Rate (lbs/hr)		455	488	531	585	648	721	803	893	990	1095	1207	1326	1450	1580	1714
	EER (Btu/Watt-hr)		6.2	6.7	7.3	8.0	9.0	10.0	11.3	12.7	14.2	15.9	17.8	19.9	22.2	24.8	27.6
100	Capacity (Btu/hr)			34000	37500	41800	46800	52600	59100	66300	74100	82500	91400	101000	111000	121500	132500
	Power (Watts)			6130	6130	6130	6130	6120	6110	6100	6080	6060	6020	5980	5930	5870	5800
	Current (Amps)			7.5	7.5	7.6	7.6	7.6	7.6	7.6	7.6	7.6	7.6	7.6	7.6	7.6	7.6
	Flow Rate (lbs/hr)			472	517	573	638	711	793	883	980	1084	1195	1311	1433	1559	1690
	EER (Btu/Watt-hr)			5.5	6.1	6.8	7.6	8.6	9.7	10.9	12.2	13.6	15.2	16.9	18.7	20.7	22.8
110	Capacity (Btu/hr)					38500	43500	49200	55600	62600	70200	78300	86900	96100	105600	115600	126000
	Power (Watts)					6800	6780	6760	6740	6720	6700	6680	6660	6630	6600	6570	6530
	Current (Amps)					8.4	8.4	8.4	8.4	8.4	8.4	8.4	8.4	8.4	8.4	8.4	8.4
	Flow Rate (lbs/hr)					551	619	695	779	870	968	1072	1183	1299	1419	1545	1674
	EER (Btu/Watt-hr)					5.7	6.4	7.3	8.3	9.3	10.5	11.7	13.1	14.5	16.0	17.6	19.3
120	Capacity (Btu/hr)							45200	51500	58400	65900	73800	82200	91000	100200	109800	119700
	Power (Watts)							7490	7450	7420	7390	7370	7340	7320	7300	7280	7260
	Current (Amps)							9.5	9.5	9.5	9.4	9.4	9.4	9.4	9.4	9.5	9.5
	Flow Rate (lbs/hr)							667	754	848	949	1056	1168	1285	1406	1531	1660
	EER (Btu/Watt-hr)							6.0	6.9	7.9	8.9	10.0	11.2	12.4	13.7	15.1	16.5
130	Capacity (Btu/hr)									53400	60800	68700	76900	85600	94500	103800	113300
	Power (Watts)									8230	8180	8140	8110	8090	8070	8060	8050
	Current (Amps)									10.7	10.7	10.7	10.7	10.7	10.7	10.7	10.8
	Flow Rate (lbs/hr)									815	919	1030	1145	1265	1388	1515	1645
	EER (Btu/Watt-hr)									6.5	7.4	8.4	9.5	10.6	11.7	12.9	14.1
140	Capacity (Btu/hr)											62700	70900	79400	88200	97300	106500
	Power (Watts)											9060	9010	8970	8950	8930	8930
	Current (Amps)											12.2	12.2	12.2	12.2	12.2	12.3
	Flow Rate (lbs/hr)											990	1110	1234	1362	1492	1625
	EER (Btu/Watt-hr)											6.9	7.9	8.8	9.9	10.9	11.9
150	Capacity (Btu/hr)													72300	81000	90000	99100
	Power (Watts)													10020	9980	9950	9940
	Current (Amps)													14.0	14.0	14.0	14.1
	Flow Rate (lbs/hr)													1189	1322	1457	1595
	EER (Btu/Watt-hr)													7.2	8.1	9.0	10.0

* Specifications are subject to change without notice

Data Based on 575 volts

MODEL SRJ942AU

575 VOLTS, THREE PHASE, 60HZ, R-22

NOMINAL PERFORMANCE AT ASRE/T 575 VOLTS

Capacity (Btu/hr).....	95,400
EER (Btu/W-hr).....	11.8
Power(W).....	8075
Current(A).....	10.8

RATING CONDITIONS AT ASRE/T

Condensing Temp.(Deg. F).....	130
Evaporating Temp.(Deg. F).....	45
Return Gas Temp.(Deg. F).....	95
Liquid Temp.(Deg. F).....	115
Ambient Temp.(Deg. F).....	95

MOTOR

Operating Voltage Range.....	518-632
Locked Rotor Amps.....	75.0
Maximum Continuous Current.....	16.0
Rated Load Amps.....	10.2

ELECTRICAL COMPONENTS

Motor Protector Type.....	Internal
Run Capacitor Type.....	N/A

OIL

Oil Type.....	Sontex SA32 w/ 1.5% SYN-O-AD
Initial Charge (oz).....	90
Re-Charge (oz).....	81

COMPRESSOR

Maximum Discharge Temp. (Deg. F).....	280
Displacement (cu. in / rev).....	7.69
Weight (lbs.,Wet).....	97.0
UL/CSA File #.....	SA11565

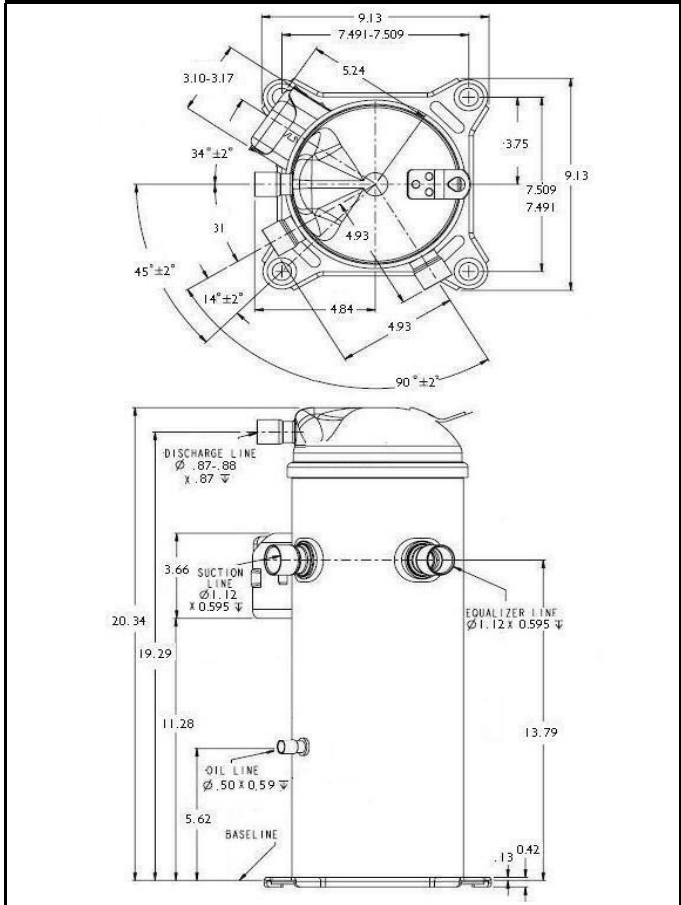
Specifications are subject to change without notice
 Nominal performance value +/- 5%
 Ratings generated with air over compressor

Carlyle Compressor Company

In the U.S.A. and Puerto Rico: 1-800-GO-CARLYLE (1-800-462-2759)
 Canada: 1-800-258-1123
 Mexico: 001-800-462-2759
 Fax: 315-432-3274

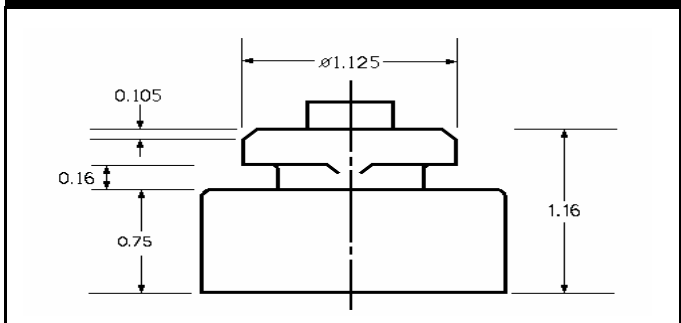
95400 Btu/hr

SR MODEL OUTLINE DIMENSIONS



Dimensions given in inches

ISOLATOR MOUNTING DIAGRAM



MODEL: SRJ942AU **SUBCOOLING:** 15' F
VOLTAGE: 575-3-60 **SUPERHEAT:** 20' F
REFRIGERANT: R-22 **RATING DATE:** Aug-06



Saturated Condensing Temperature (Degrees F)		Saturated Evaporating Temperature (Degrees F)															
		-20	-15	-10	-5	0	5	10	15	20	25	30	35	40	45	50	55
80	Capacity (Btu/hr)	34400	36000	38700	42200	46700	52100	58300	65300	73100	81700	91000	100900	111600	122800	134700	147100
	Power (Watts)	4790	4840	4880	4910	4940	4950	4950	4930	4900	4860	4800	4720	4630	4520	4380	4230
	Current (Amps)	6.2	6.3	6.4	6.5	6.5	6.6	6.6	6.7	6.7	6.7	6.7	6.7	6.7	6.6	6.6	6.6
	Flow Rate (lbs/hr)	444	464	495	538	591	655	728	811	903	1002	1110	1225	1347	1476	1610	1750
	EER (Btu/Watt-hr)	7.2	7.5	7.9	8.6	9.5	10.5	11.8	13.2	14.9	16.8	18.9	21.4	24.1	27.2	30.7	34.8
90	Capacity (Btu/hr)		34000	36600	40100	44400	49600	55500	62200	69700	77800	86600	96000	106100	116700	127800	139400
	Power (Watts)		5460	5480	5500	5520	5530	5530	5520	5510	5480	5440	5390	5330	5250	5160	5050
	Current (Amps)		6.8	6.8	6.9	6.9	7.0	7.0	7.0	7.0	7.0	7.0	7.0	7.0	7.0	7.0	7.0
	Flow Rate (lbs/hr)		455	488	531	585	648	721	803	893	990	1095	1207	1326	1450	1580	1714
	EER (Btu/Watt-hr)		6.2	6.7	7.3	8.0	9.0	10.0	11.3	12.7	14.2	15.9	17.8	19.9	22.2	24.8	27.6
100	Capacity (Btu/hr)			34000	37500	41800	46800	52600	59100	66300	74100	82500	91400	101000	111000	121500	132500
	Power (Watts)			6130	6130	6130	6130	6120	6110	6100	6080	6060	6020	5980	5930	5870	5800
	Current (Amps)			7.5	7.5	7.6	7.6	7.6	7.6	7.6	7.6	7.6	7.6	7.6	7.6	7.6	7.6
	Flow Rate (lbs/hr)			472	517	573	638	711	793	883	980	1084	1195	1311	1433	1559	1690
	EER (Btu/Watt-hr)			5.5	6.1	6.8	7.6	8.6	9.7	10.9	12.2	13.6	15.2	16.9	18.7	20.7	22.8
110	Capacity (Btu/hr)					38500	43500	49200	55600	62600	70200	78300	86900	96100	105600	115600	126000
	Power (Watts)					6800	6780	6760	6740	6720	6700	6680	6660	6630	6600	6570	6530
	Current (Amps)					8.4	8.4	8.4	8.4	8.4	8.4	8.4	8.4	8.4	8.4	8.4	8.4
	Flow Rate (lbs/hr)					551	619	695	779	870	968	1072	1183	1299	1419	1545	1674
	EER (Btu/Watt-hr)					5.7	6.4	7.3	8.3	9.3	10.5	11.7	13.1	14.5	16.0	17.6	19.3
120	Capacity (Btu/hr)							45200	51500	58400	65900	73800	82200	91000	100200	109800	119700
	Power (Watts)							7490	7450	7420	7390	7370	7340	7320	7300	7280	7260
	Current (Amps)							9.5	9.5	9.5	9.4	9.4	9.4	9.4	9.4	9.5	9.5
	Flow Rate (lbs/hr)							667	754	848	949	1056	1168	1285	1406	1531	1660
	EER (Btu/Watt-hr)							6.0	6.9	7.9	8.9	10.0	11.2	12.4	13.7	15.1	16.5
130	Capacity (Btu/hr)									53400	60800	68700	76900	85600	94500	103800	113300
	Power (Watts)									8230	8180	8140	8110	8090	8070	8060	8050
	Current (Amps)									10.7	10.7	10.7	10.7	10.7	10.7	10.7	10.8
	Flow Rate (lbs/hr)									815	919	1030	1145	1265	1388	1515	1645
	EER (Btu/Watt-hr)									6.5	7.4	8.4	9.5	10.6	11.7	12.9	14.1
140	Capacity (Btu/hr)											62700	70900	79400	88200	97300	106500
	Power (Watts)											9060	9010	8970	8950	8930	8930
	Current (Amps)											12.2	12.2	12.2	12.2	12.2	12.3
	Flow Rate (lbs/hr)											990	1110	1234	1362	1492	1625
	EER (Btu/Watt-hr)											6.9	7.9	8.8	9.9	10.9	11.9
150	Capacity (Btu/hr)													72300	81000	90000	99100
	Power (Watts)													10020	9980	9950	9940
	Current (Amps)													14.0	14.0	14.0	14.1
	Flow Rate (lbs/hr)													1189	1322	1457	1595
	EER (Btu/Watt-hr)													7.2	8.1	9.0	10.0

* Specifications are subject to change without notice

Data Based on 575 volts