

MODEL XCY382BA

200/220 VOLTS, THREE PHASE, 50HZ, R-407C

NOMINAL PERFORMANCE AT ASRE/T 220 VOLTS

Capacity (Btu/hr)	30,500
EER (Btu/W-hr).....	10.8
Power (W).....	2825
Current (A).....	12.3

RATING CONDITIONS AT ASRE/T

Condensing Temp. (Deg. F)	130
Evaporating Temp. (Deg. F)	45
Return Gas Temp. (Deg. F)	95
Liquid Temp. (Deg. F).....	115
Ambient Temp. (Deg. F)	95

MOTOR

Operating Voltage Range.....	180-242
Locked Rotor Amps.....	95.0
Maximum Continuous Current.....	19.0
Rated Load Amps.....	12.2

ELECTRICAL COMPONENTS

Motor Protector Type.....	Internal
Run Capacitor Type.....	N/A

OIL

Oil Type.....	POE / Hatco FRL 32ST
Initial Charge (oz.)	36
Re-Charge (oz.)	30

COMPRESSOR

Maximum Discharge Temp. (Deg. F)	280
Displacement (cu. in / rev).....	3.15
Weight (lbs.,Wet)	68.0
UL/CSA File #	SA11565

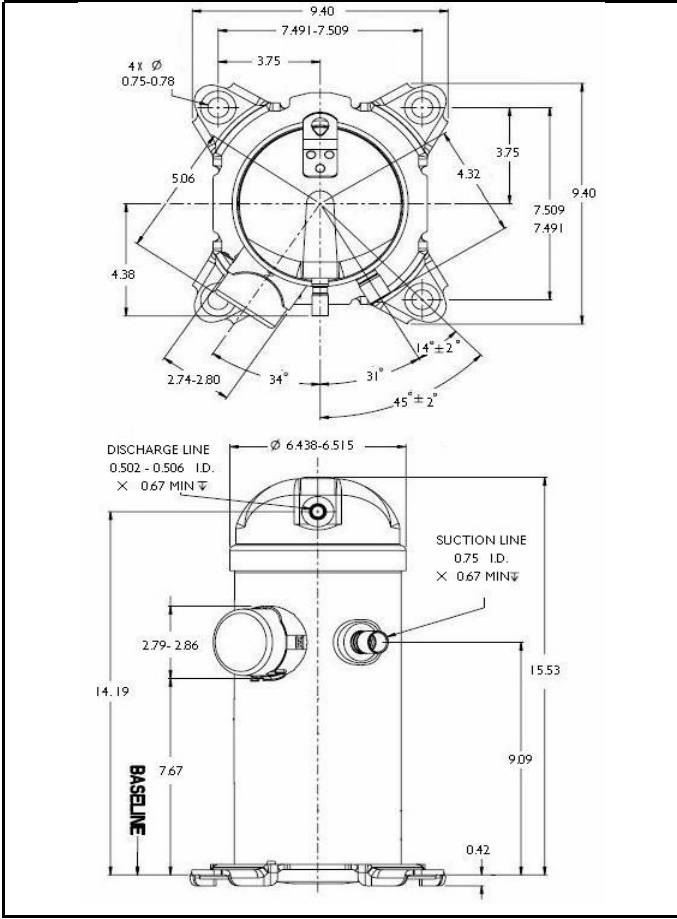
Specifications are subject to change without notice
 Nominal performance value +/- 5%
 Ratings generated with air over compressor

Carlyle Compressor Company

In the U.S.A. and Puerto Rico: 1-800-GO-CARLYLE (1-800-462-2759)
 Canada: 1-800-258-1123
 Mexico: 001-800-462-2759
 Fax: 315-432-3274

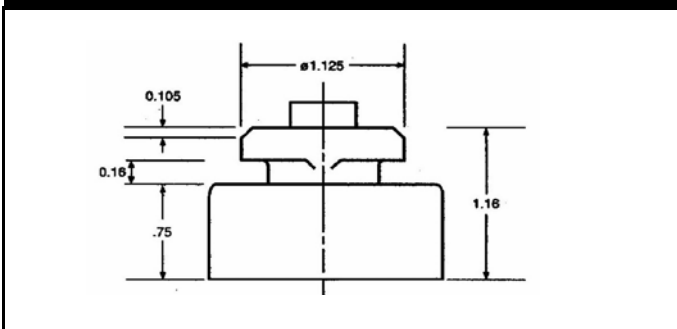
30500 Btu/hr

XC MODEL OUTLINE DIMENSIONS



Dimensions given in Inches

ISOLATOR MOUNTING DIAGRAM



MODEL: XCY382BA **SUBCOOLING:** 15' F
VOLTAGE: 200/220-3-50 **SUPERHEAT:** 20' F
REFRIGERANT: R-407C **RATING DATE:** Aug-06



Saturated Condensing Temperature (Degrees F)		Saturated Evaporating Temperature (Degrees F)															
		-20	-15	-10	-5	0	5	10	15	20	25	30	35	40	45	50	55
80	Capacity (Btu/hr)	8300	9600	11000	12600	14400	16400	18600	21000	23700	26600	29700	33100	36800	40800	45000	49600
	Power (Watts)	1512	1504	1499	1496	1494	1492	1490	1487	1482	1475	1464	1450	1430	1406	1375	1338
	Current (Amps)	8.7	8.5	8.4	8.3	8.3	8.3	8.3	8.4	8.4	8.4	8.4	8.4	8.4	8.3	8.2	8.0
	Flow Rate (lbs/hr)	109	125	142	162	183	207	233	261	291	324	360	398	439	482	529	578
	EER (Btu/Watt-hr)	5.5	6.4	7.3	8.4	9.7	11.0	12.5	14.1	16.0	18.0	20.3	22.9	25.7	29.0	32.7	37.1
90	Capacity (Btu/hr)		9000	10400	11900	13600	15500	17600	19900	22400	25200	28200	31400	34900	38700	42800	47200
	Power (Watts)		1730	1722	1715	1711	1707	1703	1698	1693	1685	1674	1660	1642	1619	1591	1556
	Current (Amps)		9.1	9.0	8.9	8.9	8.9	8.9	8.9	9.0	9.0	9.0	8.9	8.9	8.8	8.6	8.4
	Flow Rate (lbs/hr)		124	141	160	182	205	231	258	289	321	356	394	435	478	525	574
	EER (Btu/Watt-hr)		5.2	6.0	6.9	8.0	9.1	10.3	11.7	13.3	15.0	16.8	18.9	21.3	23.9	26.9	30.3
100	Capacity (Btu/hr)			9700	11200	12800	14600	16600	18800	21200	23800	26600	29700	33100	36700	40600	44700
	Power (Watts)			1969	1960	1953	1947	1942	1937	1930	1923	1913	1900	1883	1862	1836	1804
	Current (Amps)			9.7	9.7	9.6	9.6	9.6	9.6	9.6	9.7	9.6	9.6	9.5	9.4	9.2	9.0
	Flow Rate (lbs/hr)			140	159	180	203	228	256	286	318	353	391	431	474	521	570
	EER (Btu/Watt-hr)			4.9	5.7	6.6	7.5	8.5	9.7	11.0	12.4	13.9	15.6	17.6	19.7	22.1	24.8
110	Capacity (Btu/hr)					11900	13600	15500	17600	19900	22300	25000	28000	31200	34600	38300	42300
	Power (Watts)					2227	2219	2213	2207	2201	2194	2185	2173	2158	2140	2116	2087
	Current (Amps)					10.4	10.4	10.4	10.4	10.5	10.5	10.4	10.4	10.3	10.2	10.0	9.7
	Flow Rate (lbs/hr)					177	200	225	252	282	315	349	387	427	470	516	565
	EER (Btu/Watt-hr)					5.4	6.1	7.0	8.0	9.0	10.2	11.5	12.9	14.4	16.2	18.1	20.3
120	Capacity (Btu/hr)							14400	16300	18500	20800	23400	26100	29200	32400	36000	39700
	Power (Watts)							2522	2516	2510	2503	2495	2486	2473	2457	2437	2412
	Current (Amps)							11.4	11.4	11.4	11.4	11.4	11.3	11.3	11.1	10.9	10.6
	Flow Rate (lbs/hr)							221	248	278	310	345	382	422	465	511	560
	EER (Btu/Watt-hr)							5.7	6.5	7.4	8.3	9.4	10.5	11.8	13.2	14.8	16.5
130	Capacity (Btu/hr)									17000	19200	21600	24200	27100	30200	33500	37100
	Power (Watts)									2862	2857	2851	2843	2833	2820	2803	2782
	Current (Amps)									12.5	12.5	12.5	12.4	12.3	12.2	12.0	11.7
	Flow Rate (lbs/hr)									271	303	338	375	415	458	504	553
	EER (Btu/Watt-hr)									5.9	6.7	7.6	8.5	9.6	10.7	12.0	13.3
140	Capacity (Btu/hr)											19700	22200	24900	27800	30900	34400
	Power (Watts)											3255	3250	3243	3234	3221	3204
	Current (Amps)											13.6	13.6	13.5	13.4	13.2	12.9
	Flow Rate (lbs/hr)											329	367	407	450	496	544
	EER (Btu/Watt-hr)											6.0	6.8	7.7	8.6	9.6	10.7
150	Capacity (Btu/hr)												22500	25200	28200	31400	
	Power (Watts)												3710	3704	3695	3683	
	Current (Amps)												14.9	14.7	14.6	14.3	
	Flow Rate (lbs/hr)												395	438	484	533	
	EER (Btu/Watt-hr)												6.1	6.8	7.6	8.5	

* Specifications are subject to change without notice

Data Based on 220 volts

MODEL XCY402BA

200/220 VOLTS, THREE PHASE, 50HZ, R-407C

31400 Btu/hr

NOMINAL PERFORMANCE AT ASRE/T 220 VOLTS

Capacity (Btu/hr)	31,400
EER (Btu/W-hr).....	10.0
Power (W).....	3145
Current (A).....	11.0

RATING CONDITIONS AT ASRE/T

Condensing Temp. (Deg. F)	130
Evaporating Temp. (Deg. F)	45
Return Gas Temp. (Deg. F)	95
Liquid Temp. (Deg. F).....	115
Ambient Temp. (Deg. F)	95

MOTOR

Operating Voltage Range.....	180-242
Locked Rotor Amps.....	95.0
Maximum Continuous Current.....	20.0
Rated Load Amps.....	12.8

ELECTRICAL COMPONENTS

Motor Protector Type.....	Internal
Run Capacitor Type.....	N/A

OIL

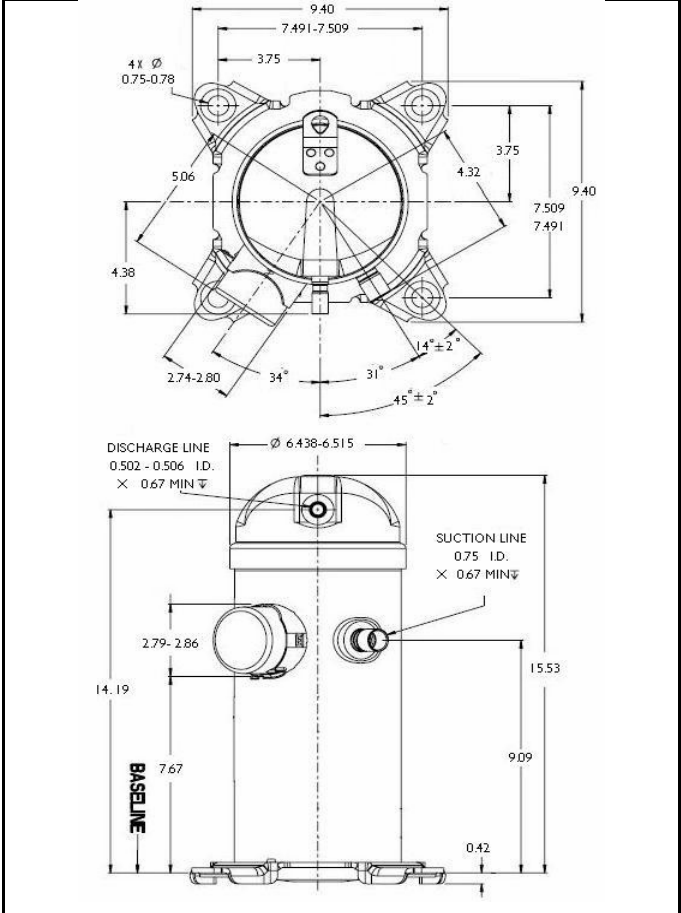
Oil Type.....	POE / Hatco FRL 32ST
Initial Charge (oz.)	36
Re-Charge (oz.)	30

COMPRESSOR

Maximum Discharge Temp. (Deg. F)	280
Displacement (cu. in / rev).....	3.32
Weight (lbs.,Wet)	68.0
UL/CSA File #	SA11565

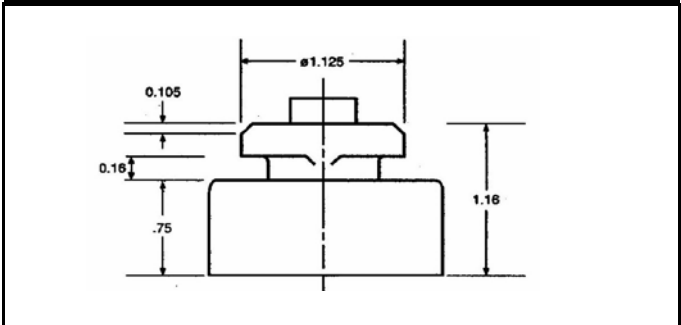
Specifications are subject to change without notice
 Nominal performance value +/- 5%
 Ratings generated with air over compressor

XC MODEL OUTLINE DIMENSIONS



Dimensions given in Inches

ISOLATOR MOUNTING DIAGRAM



Carlyle Compressor Company

In the U.S.A. and Puerto Rico: 1-800-GO-CARLYLE (1-800-462-2759)
 Canada: 1-800-258-1123
 Mexico: 001-800-462-2759
 Fax: 315-432-3274

MODEL: XCY402BA **SUBCOOLING:** 15' F
VOLTAGE: 200/220-3-50 **SUPERHEAT:** 20' F
REFRIGERANT: R-407C **RATING DATE:** Aug-06



Saturated Condensing Temperature (Degrees F)		Saturated Evaporating Temperature (Degrees F)															
		-20	-15	-10	-5	0	5	10	15	20	25	30	35	40	45	50	55
80	Capacity (Btu/hr)	8800	10100	11700	13400	15300	17400	19800	22300	25100	28200	31600	35200	39100	43300	47900	52800
	Power (Watts)	1648	1639	1633	1629	1627	1625	1623	1620	1615	1607	1596	1580	1559	1532	1497	1455
	Current (Amps)	7.8	7.6	7.5	7.4	7.4	7.4	7.4	7.5	7.5	7.5	7.5	7.5	7.5	7.4	7.3	7.1
	Flow Rate (lbs/hr)	115	132	151	172	195	220	247	277	309	344	382	422	466	513	563	616
	EER (Btu/Watt-hr)	5.3	6.2	7.1	8.2	9.4	10.7	12.2	13.8	15.6	17.6	19.8	22.3	25.1	28.3	32.0	36.3
90	Capacity (Btu/hr)		9500	11000	12600	14400	16400	18600	21100	23700	26600	29800	33200	37000	41000	45300	49900
	Power (Watts)		1892	1882	1874	1869	1864	1860	1856	1849	1841	1830	1815	1795	1769	1737	1698
	Current (Amps)		8.2	8.1	8.0	7.9	7.9	8.0	8.0	8.0	8.0	8.0	8.0	7.9	7.8	7.7	7.5
	Flow Rate (lbs/hr)		131	149	170	192	217	244	273	305	340	377	417	460	506	555	608
	EER (Btu/Watt-hr)		5.0	5.8	6.7	7.7	8.8	10.0	11.4	12.8	14.5	16.3	18.3	20.6	23.2	26.1	29.4
100	Capacity (Btu/hr)			10200	11800	13500	15400	17500	19800	22300	25000	28000	31300	34800	38600	42700	47100
	Power (Watts)			2163	2152	2143	2136	2130	2125	2118	2109	2099	2084	2066	2043	2014	1978
	Current (Amps)			8.7	8.6	8.6	8.6	8.6	8.6	8.6	8.6	8.6	8.6	8.5	8.4	8.2	8.0
	Flow Rate (lbs/hr)			146	167	189	213	240	269	301	335	372	411	454	499	548	600
	EER (Btu/Watt-hr)			4.7	5.5	6.3	7.2	8.2	9.3	10.5	11.9	13.4	15.0	16.8	18.9	21.2	23.8
110	Capacity (Btu/hr)				12500	14200	16200	18400	20800	23300	26200	29200	32600	36200	40000	44200	
	Power (Watts)				2456	2447	2440	2433	2427	2418	2409	2396	2380	2359	2333	2301	
	Current (Amps)				9.3	9.3	9.3	9.3	9.3	9.4	9.3	9.3	9.2	9.1	8.9	8.7	
	Flow Rate (lbs/hr)				185	209	235	264	295	329	365	405	447	492	540	591	
	EER (Btu/Watt-hr)				5.1	5.8	6.6	7.6	8.6	9.7	10.9	12.2	13.7	15.3	17.2	19.2	
120	Capacity (Btu/hr)							14900	16900	19200	21600	24300	27100	30300	33700	37300	41300
	Power (Watts)							2795	2788	2782	2774	2766	2755	2741	2723	2701	2673
	Current (Amps)							10.2	10.2	10.2	10.2	10.2	10.1	10.1	9.9	9.8	9.5
	Flow Rate (lbs/hr)							229	257	288	322	358	397	438	483	530	581
	EER (Btu/Watt-hr)							5.3	6.1	6.9	7.8	8.8	9.9	11.0	12.4	13.8	15.4
130	Capacity (Btu/hr)									17500	19800	22300	25000	27900	31100	34500	38200
	Power (Watts)									3189	3183	3176	3167	3157	3142	3124	3101
	Current (Amps)									11.1	11.1	11.1	11.1	11.0	10.9	10.7	10.5
	Flow Rate (lbs/hr)									279	313	348	387	428	472	520	570
	EER (Btu/Watt-hr)									5.5	6.2	7.0	7.9	8.8	9.9	11.1	12.3
140	Capacity (Btu/hr)											20200	22700	25400	28400	31700	35100
	Power (Watts)											3646	3640	3632	3622	3608	3590
	Current (Amps)											12.2	12.2	12.1	12.0	11.8	11.6
	Flow Rate (lbs/hr)											337	375	416	460	507	557
	EER (Btu/Watt-hr)											5.5	6.2	7.0	7.8	8.8	9.8
150	Capacity (Btu/hr)													22900	25700	28700	31900
	Power (Watts)													4174	4168	4159	4146
	Current (Amps)													13.3	13.2	13.0	12.8
	Flow Rate (lbs/hr)													402	446	492	542
	EER (Btu/Watt-hr)													5.5	6.2	6.9	7.7

* Specifications are subject to change without notice

Data Based on 220 volts

MODEL XCY422BA

200/220 VOLTS, THREE PHASE, 50HZ, R-407C

NOMINAL PERFORMANCE AT ASRE/T 220 VOLTS

Capacity (Btu/hr)	33,000
EER (Btu/W-hr).....	10.0
Power (W).....	3310
Current (A).....	11.0

RATING CONDITIONS AT ASRE/T

Condensing Temp. (Deg. F)	130
Evaporating Temp. (Deg. F)	45
Return Gas Temp. (Deg. F)	95
Liquid Temp. (Deg. F).....	115
Ambient Temp. (Deg. F)	95

MOTOR

Operating Voltage Range.....	180-242
Locked Rotor Amps.....	95.0
Maximum Continuous Current.....	22.0
Rated Load Amps.....	14.1

ELECTRICAL COMPONENTS

Motor Protector Type.....	Internal
Run Capacitor Type.....	N/A

OIL

Oil Type.....	POE / Hatco FRL 32ST
Initial Charge (oz.)	36
Re-Charge (oz.)	30

COMPRESSOR

Maximum Discharge Temp. (Deg. F)	280
Displacement (cu. in / rev).....	3.48
Weight (lbs.,Wet)	68.0
UL/CSA File #	SA11565

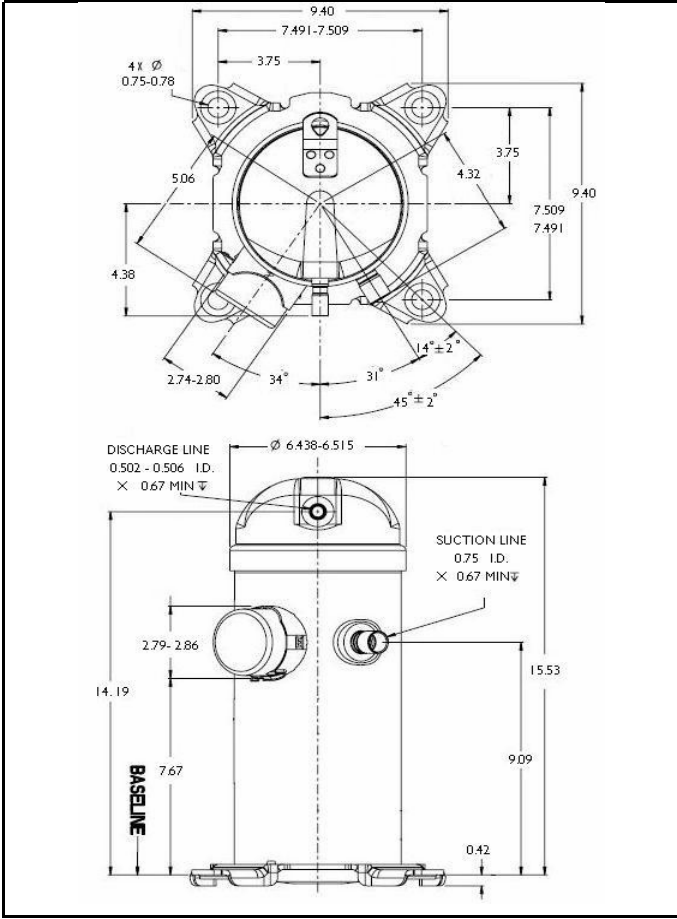
Specifications are subject to change without notice
 Nominal performance value +/- 5%
 Ratings generated with air over compressor

Carlyle Compressor Company

In the U.S.A. and Puerto Rico: 1-800-GO-CARLYLE (1-800-462-2759)
 Canada: 1-800-258-1123
 Mexico: 001-800-462-2759
 Fax: 315-432-3274

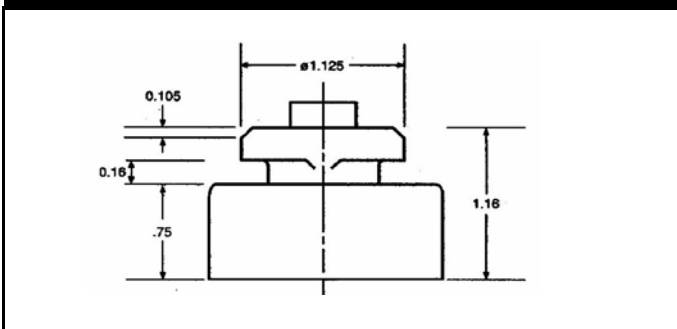
33000 Btu/hr

XC MODEL OUTLINE DIMENSIONS



Dimensions given in Inches

ISOLATOR MOUNTING DIAGRAM



MODEL: XCY422BA **SUBCOOLING:** 15' F
VOLTAGE: 200/220-3-50 **SUPERHEAT:** 20' F
REFRIGERANT: R-407C **RATING DATE:** Aug-06



Saturated Condensing Temperature (Degrees F)		Saturated Evaporating Temperature (Degrees F)															
		-20	-15	-10	-5	0	5	10	15	20	25	30	35	40	45	50	55
80	Capacity (Btu/hr)	9200	10700	12300	14100	16100	18300	20800	23500	26400	29700	33200	37000	41100	45600	50400	55500
	Power (Watts)	1733	1724	1718	1714	1712	1710	1708	1704	1699	1691	1679	1662	1640	1611	1575	1531
	Current (Amps)	7.8	7.6	7.5	7.4	7.4	7.4	7.4	7.5	7.5	7.5	7.5	7.5	7.5	7.4	7.3	7.1
	Flow Rate (lbs/hr)	121	139	159	181	205	231	260	291	325	362	402	444	490	539	592	648
	EER (Btu/Watt-hr)	5.3	6.2	7.1	8.2	9.4	10.7	12.2	13.8	15.6	17.6	19.8	22.3	25.1	28.3	32.0	36.3
90	Capacity (Btu/hr)		10000	11500	13300	15200	17300	19600	22200	25000	28000	31400	35000	38900	43100	47700	52500
	Power (Watts)		1990	1980	1972	1966	1961	1957	1952	1945	1937	1925	1909	1888	1861	1827	1786
	Current (Amps)		8.2	8.1	8.0	7.9	7.9	8.0	8.0	8.0	8.0	8.0	8.0	7.9	7.8	7.7	7.5
	Flow Rate (lbs/hr)		137	157	179	202	228	257	288	321	357	397	439	484	532	584	639
	EER (Btu/Watt-hr)		5.0	5.8	6.7	7.7	8.8	10.0	11.4	12.8	14.5	16.3	18.3	20.6	23.2	26.1	29.4
100	Capacity (Btu/hr)			10700	12400	14200	16200	18400	20800	23400	26300	29500	32900	36600	40600	44900	49500
	Power (Watts)			2275	2263	2254	2247	2241	2235	2228	2219	2207	2192	2173	2149	2118	2080
	Current (Amps)			8.7	8.6	8.6	8.6	8.6	8.6	8.6	8.6	8.6	8.6	8.5	8.4	8.2	8.0
	Flow Rate (lbs/hr)			154	175	199	225	253	283	316	352	391	433	477	525	576	631
	EER (Btu/Watt-hr)			4.7	5.5	6.3	7.2	8.2	9.3	10.5	11.9	13.4	15.0	16.8	18.9	21.2	23.8
110	Capacity (Btu/hr)					13100	15000	17100	19300	21800	24600	27500	30800	34300	38000	42100	46500
	Power (Watts)					2583	2574	2566	2559	2552	2543	2533	2520	2503	2481	2453	2420
	Current (Amps)					9.3	9.3	9.3	9.3	9.3	9.4	9.3	9.3	9.2	9.1	8.9	8.7
	Flow Rate (lbs/hr)					194	220	247	278	310	346	384	425	470	517	568	622
	EER (Btu/Watt-hr)					5.1	5.8	6.6	7.6	8.6	9.7	10.9	12.2	13.7	15.3	17.2	19.2
120	Capacity (Btu/hr)							15700	17800	20200	22700	25500	28500	31800	35400	39200	43400
	Power (Watts)							2940	2932	2925	2917	2908	2897	2882	2864	2840	2811
	Current (Amps)							10.2	10.2	10.2	10.2	10.2	10.1	10.1	9.9	9.8	9.5
	Flow Rate (lbs/hr)							241	271	303	338	376	417	461	508	558	611
	EER (Btu/Watt-hr)							5.3	6.1	6.9	7.8	8.8	9.9	11.0	12.4	13.8	15.4
130	Capacity (Btu/hr)									18400	20800	23400	26300	29300	32700	36300	40200
	Power (Watts)									3353	3347	3339	3330	3319	3304	3285	3260
	Current (Amps)									11.1	11.1	11.1	11.1	11.0	10.9	10.7	10.5
	Flow Rate (lbs/hr)									294	329	366	407	450	497	546	599
	EER (Btu/Watt-hr)									5.5	6.2	7.0	7.9	8.8	9.9	11.1	12.3
140	Capacity (Btu/hr)											21200	23900	26800	29900	33300	36900
	Power (Watts)											3833	3827	3819	3808	3793	3774
	Current (Amps)											12.2	12.2	12.1	12.0	11.8	11.6
	Flow Rate (lbs/hr)											354	395	438	484	533	586
	EER (Btu/Watt-hr)											5.5	6.2	7.0	7.8	8.8	9.8
150	Capacity (Btu/hr)												24000	27000	30100	33600	
	Power (Watts)												4388	4382	4372	4359	
	Current (Amps)												13.3	13.2	13.0	12.8	
	Flow Rate (lbs/hr)												423	468	517	570	
	EER (Btu/Watt-hr)												5.5	6.2	6.9	7.7	

* Specifications are subject to change without notice

Data Based on 220 volts

MODEL XCY452BA

200/220 VOLTS, THREE PHASE, 50HZ, R-407C

NOMINAL PERFORMANCE AT ASRE/T 220 VOLTS

Capacity (Btu/hr)	37,300
EER (Btu/W-hr).....	10.4
Power (W).....	3590
Current (A).....	15.4

RATING CONDITIONS AT ASRE/T

Condensing Temp. (Deg. F)	130
Evaporating Temp. (Deg. F)	45
Return Gas Temp. (Deg. F)	95
Liquid Temp. (Deg. F).....	115
Ambient Temp. (Deg. F)	95

MOTOR

Operating Voltage Range.....	180-242
Locked Rotor Amps.....	110.0
Maximum Continuous Current.....	25.0
Rated Load Amps.....	16.0

ELECTRICAL COMPONENTS

Motor Protector Type.....	Internal
Run Capacitor Type.....	N/A

OIL

Oil Type.....	POE / Hatco FRL 32ST
Initial Charge (oz.)	45
Re-Charge (oz.)	39

COMPRESSOR

Maximum Discharge Temp. (Deg. F)	280
Displacement (cu. in / rev).....	3.70
Weight (lbs.,Wet)	71.0
UL/CSA File #	SA11565

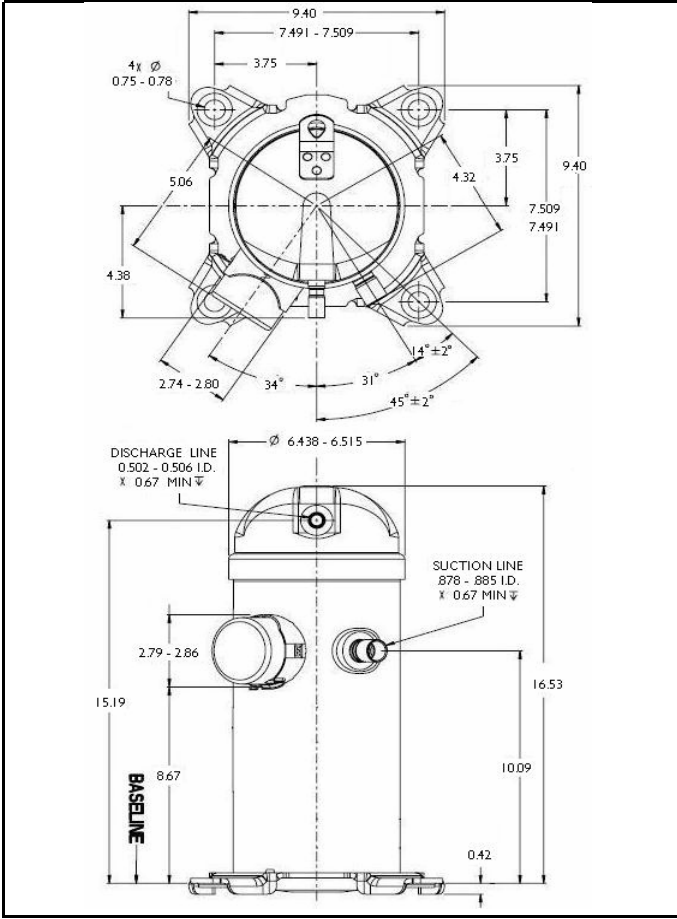
Specifications are subject to change without notice
 Nominal performance value +/- 5%
 Ratings generated with air over compressor

Carlyle Compressor Company

In the U.S.A. and Puerto Rico: 1-800-GO-CARLYLE (1-800-462-2759)
 Canada: 1-800-258-1123
 Mexico: 001-800-462-2759
 Fax: 315-432-3274

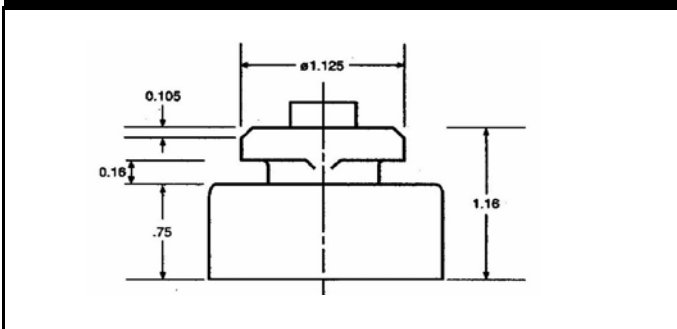
37300 Btu/hr

XC MODEL OUTLINE DIMENSIONS



Dimensions given in Inches

ISOLATOR MOUNTING DIAGRAM



MODEL: XCY452BA **SUBCOOLING:** 15' F
VOLTAGE: 200/220-3-50 **SUPERHEAT:** 20' F
REFRIGERANT: R-407C **RATING DATE:** Aug-06



Saturated Condensing Temperature (Degrees F)		Saturated Evaporating Temperature (Degrees F)															
		-20	-15	-10	-5	0	5	10	15	20	25	30	35	40	45	50	55
80	Capacity (Btu/hr)	10000	11500	13200	15200	17300	19700	22400	25300	28500	31900	35700	39800	44200	48900	54000	59400
	Power (Watts)	1748	1736	1728	1724	1722	1721	1720	1718	1713	1706	1694	1677	1654	1623	1584	1535
	Current (Amps)	10.9	10.7	10.5	10.4	10.4	10.4	10.4	10.5	10.5	10.6	10.6	10.6	10.5	10.4	10.3	10.0
	Flow Rate (lbs/hr)	131	150	171	195	221	249	280	314	350	390	432	478	526	579	634	694
	EER (Btu/Watt-hr)	5.7	6.6	7.7	8.8	10.1	11.5	13.0	14.7	16.6	18.7	21.1	23.7	26.7	30.1	34.1	38.7
90	Capacity (Btu/hr)		10900	12500	14300	16400	18700	21200	24000	27000	30300	33900	37800	42100	46600	51500	56700
	Power (Watts)		2031	2017	2007	2000	1995	1990	1986	1980	1971	1960	1943	1921	1893	1856	1811
	Current (Amps)		11.5	11.3	11.2	11.2	11.2	11.2	11.2	11.2	11.3	11.3	11.2	11.2	11.0	10.8	10.5
	Flow Rate (lbs/hr)		149	170	193	219	247	278	311	348	387	429	475	523	576	631	690
	EER (Btu/Watt-hr)		5.4	6.2	7.1	8.2	9.4	10.7	12.1	13.6	15.4	17.3	19.5	21.9	24.6	27.7	31.3
100	Capacity (Btu/hr)			11800	13500	15500	17600	20000	22700	25600	28700	32200	35900	39900	44300	49000	54000
	Power (Watts)			2355	2340	2328	2319	2312	2305	2298	2289	2278	2262	2242	2216	2183	2142
	Current (Amps)			12.2	12.1	12.1	12.1	12.1	12.1	12.1	12.1	12.1	12.1	12.0	11.8	11.6	11.3
	Flow Rate (lbs/hr)			169	192	217	245	276	309	345	384	427	472	521	573	629	688
	EER (Btu/Watt-hr)			5.0	5.8	6.6	7.6	8.7	9.8	11.1	12.5	14.1	15.9	17.8	20.0	22.4	25.2
110	Capacity (Btu/hr)					14500	16500	18800	21300	24100	27100	30400	33900	37800	41900	46400	51300
	Power (Watts)					2714	2702	2692	2684	2676	2667	2656	2642	2624	2601	2572	2536
	Current (Amps)					13.1	13.1	13.1	13.1	13.1	13.1	13.1	13.1	13.0	12.8	12.5	12.2
	Flow Rate (lbs/hr)					215	242	273	306	342	381	424	469	518	570	626	685
	EER (Btu/Watt-hr)					5.3	6.1	7.0	7.9	9.0	10.2	11.4	12.8	14.4	16.1	18.1	20.2
120	Capacity (Btu/hr)							17500	19900	22500	25300	28500	31800	35500	39500	43800	48400
	Power (Watts)							3138	3128	3120	3111	3101	3090	3074	3055	3030	2999
	Current (Amps)							14.3	14.3	14.3	14.3	14.3	14.2	14.1	14.0	13.7	13.4
	Flow Rate (lbs/hr)							269	302	338	377	420	465	514	566	622	682
	EER (Btu/Watt-hr)							5.6	6.4	7.2	8.1	9.2	10.3	11.6	12.9	14.4	16.1
130	Capacity (Btu/hr)									20800	23500	26400	29600	33100	36900	41000	45400
	Power (Watts)									3637	3630	3622	3612	3600	3585	3565	3539
	Current (Amps)									15.6	15.6	15.6	15.6	15.5	15.3	15.0	14.7
	Flow Rate (lbs/hr)									332	371	413	459	508	561	617	677
	EER (Btu/Watt-hr)									5.7	6.5	7.3	8.2	9.2	10.3	11.5	12.8
140	Capacity (Btu/hr)											24200	27200	30500	34100	38000	42200
	Power (Watts)											4224	4217	4209	4198	4183	4163
	Current (Amps)											17.1	17.1	17.0	16.8	16.6	16.2
	Flow Rate (lbs/hr)											404	450	500	552	609	669
	EER (Btu/Watt-hr)											5.7	6.5	7.3	8.1	9.1	10.1
150	Capacity (Btu/hr)													27700	31100	34800	38800
	Power (Watts)													4907	4901	4892	4879
	Current (Amps)													18.7	18.5	18.3	18.0
	Flow Rate (lbs/hr)													488	541	597	658
	EER (Btu/Watt-hr)													5.7	6.4	7.1	8.0

* Specifications are subject to change without notice

Data Based on 220 volts

MODEL XCY472BA

200/220 VOLTS, THREE PHASE, 50HZ, R-407C

NOMINAL PERFORMANCE AT ASRE/T 220 VOLTS

Capacity (Btu/hr)	38,400
EER (Btu/W-hr).....	10.4
Power (W).....	3695
Current (A).....	15.7

RATING CONDITIONS AT ASRE/T

Condensing Temp. (Deg. F)	130
Evaporating Temp. (Deg. F)	45
Return Gas Temp. (Deg. F)	95
Liquid Temp. (Deg. F).....	115
Ambient Temp. (Deg. F)	95

MOTOR

Operating Voltage Range.....	180-242
Locked Rotor Amps.....	110.0
Maximum Continuous Current.....	25.0
Rated Load Amps.....	16.0

ELECTRICAL COMPONENTS

Motor Protector Type.....	Internal
Run Capacitor Type.....	N/A

OIL

Oil Type.....	POE / Hatco FRL 32ST
Initial Charge (oz.)	45
Re-Charge (oz.)	39

COMPRESSOR

Maximum Discharge Temp. (Deg. F)	280
Displacement (cu. in / rev).....	3.87
Weight (lbs.,Wet)	71.0
UL/CSA File #	SA11565

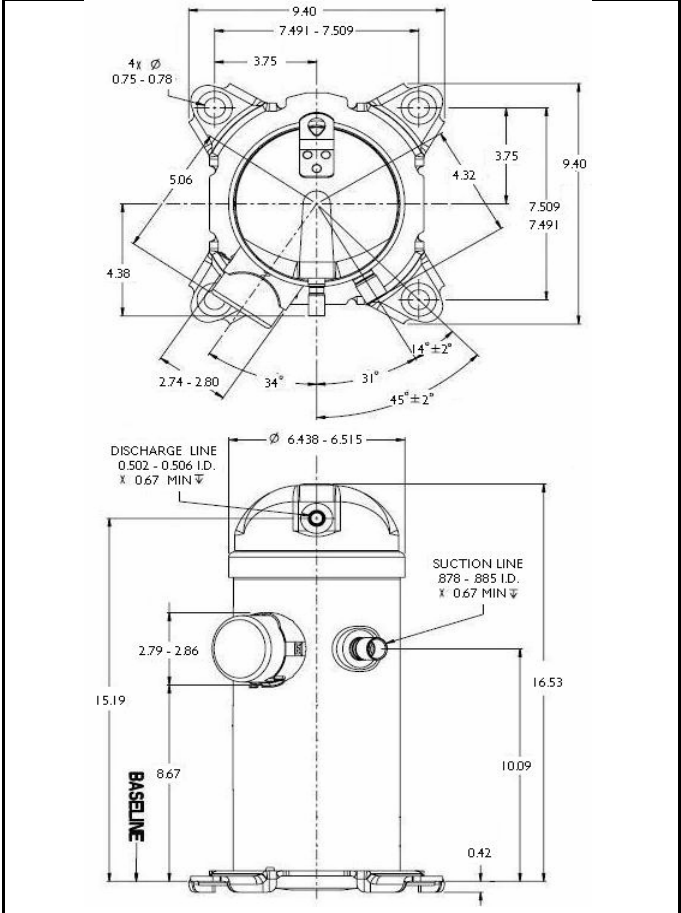
Specifications are subject to change without notice
 Nominal performance value +/- 5%
 Ratings generated with air over compressor

Carlyle Compressor Company

In the U.S.A. and Puerto Rico: 1-800-GO-CARLYLE (1-800-462-2759)
 Canada: 1-800-258-1123
 Mexico: 001-800-462-2759
 Fax: 315-432-3274

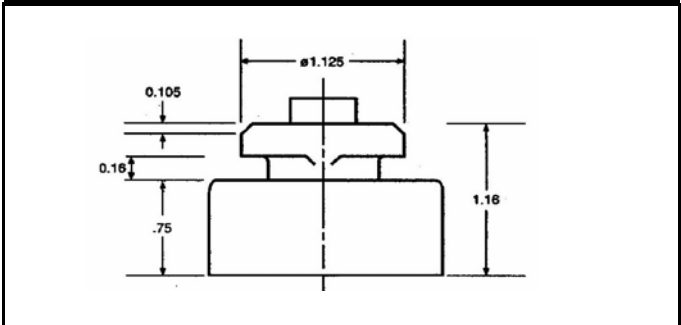
38400 Btu/hr

XC MODEL OUTLINE DIMENSIONS



Dimensions given in Inches

ISOLATOR MOUNTING DIAGRAM



MODEL: XCY472BA **SUBCOOLING:** 15' F
VOLTAGE: 200/220-3-50 **SUPERHEAT:** 20' F
REFRIGERANT: R-407C **RATING DATE:** Aug-06



Saturated Condensing Temperature (Degrees F)		Saturated Evaporating Temperature (Degrees F)																
		-20	-15	-10	-5	0	5	10	15	20	25	30	35	40	45	50	55	
80	Capacity (Btu/hr)	10500	12200	14000	16000	18300	20900	23700	26700	30100	33800	37800	42100	46800	51800	57300	63100	
	Power (Watts)	1851	1839	1832	1827	1825	1823	1822	1819	1814	1806	1793	1775	1751	1719	1679	1629	
	Current (Amps)	11.1	10.9	10.7	10.6	10.6	10.6	10.6	10.7	10.7	10.8	10.8	10.8	10.7	10.6	10.4	10.2	
	Flow Rate (lbs/hr)	138	159	181	206	233	263	296	332	370	412	457	506	558	613	673	736	
	EER (Btu/Watt-hr)	5.7	6.6	7.6	8.8	10.0	11.4	13.0	14.7	16.6	18.7	21.1	23.7	26.7	30.2	34.1	38.7	
90	Capacity (Btu/hr)		11400	13200	15100	17300	19700	22400	25300	28500	32000	35800	39900	44400	49200	54400	59900	
	Power (Watts)		2141	2127	2117	2110	2105	2100	2095	2089	2080	2067	2050	2027	1997	1960	1913	
	Current (Amps)		11.7	11.5	11.4	11.4	11.3	11.4	11.4	11.4	11.5	11.5	11.4	11.3	11.2	11.0	10.7	
	Flow Rate (lbs/hr)		157	179	204	231	260	293	328	367	408	453	501	552	607	666	729	
	EER (Btu/Watt-hr)		5.3	6.2	7.1	8.2	9.4	10.6	12.1	13.6	15.4	17.3	19.5	21.9	24.6	27.7	31.3	
100	Capacity (Btu/hr)			12300	14200	16200	18500	21000	23800	26800	30100	33800	37700	41900	46500	51400	56700	
	Power (Watts)			2468	2453	2442	2434	2426	2419	2412	2402	2390	2374	2353	2326	2292	2250	
	Current (Amps)			12.4	12.3	12.3	12.3	12.3	12.3	12.3	12.3	12.3	12.3	12.2	12.0	11.8	11.4	
	Flow Rate (lbs/hr)			177	201	228	257	289	324	362	403	448	496	547	602	660	722	
	EER (Btu/Watt-hr)			5.0	5.8	6.6	7.6	8.7	9.8	11.1	12.5	14.1	15.9	17.8	20.0	22.4	25.2	
110	Capacity (Btu/hr)					15100	17300	19600	22200	25100	28300	31700	35400	39400	43800	48400	53500	
	Power (Watts)					2828	2817	2807	2799	2791	2781	2770	2756	2737	2713	2683	2646	
	Current (Amps)					13.3	13.3	13.3	13.3	13.4	13.4	13.3	13.3	13.2	13.0	12.7	12.4	
	Flow Rate (lbs/hr)					224	253	285	319	357	398	442	490	540	595	653	715	
	EER (Btu/Watt-hr)					5.3	6.1	7.0	7.9	9.0	10.2	11.4	12.8	14.4	16.1	18.1	20.2	
120	Capacity (Btu/hr)								18100	20600	23300	26300	29500	33000	36800	40900	45400	50200
	Power (Watts)								3251	3241	3233	3224	3214	3202	3186	3166	3140	3108
	Current (Amps)								14.5	14.5	14.6	14.6	14.5	14.5	14.4	14.2	13.9	13.6
	Flow Rate (lbs/hr)								278	313	350	391	435	482	533	587	645	707
	EER (Btu/Watt-hr)								5.6	6.4	7.2	8.1	9.2	10.3	11.6	12.9	14.5	16.1
130	Capacity (Btu/hr)										21400	24200	27200	30500	34100	38000	42200	46700
	Power (Watts)										3746	3738	3730	3720	3708	3691	3671	3644
	Current (Amps)										15.9	15.9	15.9	15.8	15.7	15.6	15.3	15.0
	Flow Rate (lbs/hr)										342	382	426	473	523	577	635	697
	EER (Btu/Watt-hr)										5.7	6.5	7.3	8.2	9.2	10.3	11.5	12.8
140	Capacity (Btu/hr)											24800	27900	31200	34900	38900	43200	
	Power (Watts)											4324	4318	4309	4297	4282	4261	
	Current (Amps)											17.4	17.4	17.3	17.1	16.9	16.5	
	Flow Rate (lbs/hr)											414	461	511	565	623	684	
	EER (Btu/Watt-hr)											5.7	6.5	7.3	8.1	9.1	10.1	
150	Capacity (Btu/hr)													28200	31700	35400	39400	
	Power (Watts)													4998	4991	4981	4967	
	Current (Amps)													19.0	18.8	18.6	18.3	
	Flow Rate (lbs/hr)													496	550	607	669	
	EER (Btu/Watt-hr)													5.6	6.3	7.1	7.9	

* Specifications are subject to change without notice

Data Based on 220 volts