

MODEL: XGJ322HA **SUBCOOLING:** 15' F
VOLTAGE: 575-3-60 **SUPERHEAT:** 20' F
REFRIGERANT: R-410A **RATING DATE:** Aug-06



Saturated Condensing		Saturated Evaporating Temperature (Degrees F)															
Temperature (Degrees F)		-20	-15	-10	-5	0	5	10	15	20	25	30	35	40	45	50	55
80	Capacity (Btu/hr)	8600	10000	11500	13300	15200	17400	19900	22500	25400	28600	32000	35800	39800	44100	48700	53600
	Power (Watts)	1700	1690	1680	1670	1660	1660	1650	1650	1640	1640	1630	1620	1620	1610	1590	1580
	Current (Amps)	2.4	2.4	2.4	2.4	2.4	2.4	2.4	2.4	2.4	2.3	2.3	2.3	2.3	2.3	2.2	2.2
	Flow Rate (lbs/hr)	105	121	138	158	180	205	232	261	293	328	366	406	449	496	545	598
	EER (Btu/Watt-hr)	5.0	5.9	6.9	8.0	9.2	10.5	12.0	13.7	15.5	17.5	19.7	22.0	24.6	27.4	30.6	34.0
90	Capacity (Btu/hr)		8900	10400	12100	14100	16200	18500	21000	23800	26900	30200	33700	37500	41600	46000	50700
	Power (Watts)		1980	1960	1940	1930	1920	1910	1900	1890	1880	1870	1850	1840	1830	1810	1790
	Current (Amps)		2.6	2.6	2.6	2.6	2.6	2.6	2.6	2.5	2.5	2.5	2.5	2.5	2.5	2.5	2.4
	Flow Rate (lbs/hr)		114	132	152	174	199	226	256	288	323	360	400	443	489	538	591
	EER (Btu/Watt-hr)		4.5	5.3	6.2	7.3	8.4	9.7	11.1	12.6	14.3	16.2	18.2	20.4	22.8	25.5	28.4
100	Capacity (Btu/hr)			9400	11000	12900	14900	17100	19600	22200	25100	28300	31700	35300	39200	43400	47900
	Power (Watts)			2270	2250	2230	2220	2200	2180	2170	2150	2140	2120	2100	2090	2060	2040
	Current (Amps)			2.8	2.8	2.8	2.8	2.8	2.8	2.8	2.8	2.7	2.7	2.7	2.7	2.7	2.7
	Flow Rate (lbs/hr)			124	145	168	193	220	250	282	317	355	395	438	483	532	584
	EER (Btu/Watt-hr)			4.1	4.9	5.8	6.7	7.8	9.0	10.2	11.7	13.2	14.9	16.8	18.8	21.0	23.5
110	Capacity (Btu/hr)					11600	13600	15700	18100	20600	23400	26300	29600	33000	36700	40700	44900
	Power (Watts)					2580	2560	2540	2510	2500	2480	2460	2440	2410	2390	2360	2340
	Current (Amps)					3.0	3.0	3.0	3.0	3.0	3.0	3.0	3.0	3.0	2.9	2.9	2.9
	Flow Rate (lbs/hr)					160	186	214	244	276	311	348	389	431	477	526	577
	EER (Btu/Watt-hr)					4.5	5.3	6.2	7.2	8.3	9.4	10.7	12.1	13.7	15.4	17.2	19.2
120	Capacity (Btu/hr)								14300	16500	18900	21500	24300	27400	30700	34200	37900
	Power (Watts)								2920	2890	2870	2840	2820	2800	2770	2740	2680
	Current (Amps)								3.3	3.3	3.3	3.3	3.3	3.3	3.3	3.2	3.2
	Flow Rate (lbs/hr)								205	236	268	303	341	381	424	470	518
	EER (Btu/Watt-hr)								4.9	5.7	6.6	7.6	8.6	9.8	11.1	12.5	14.0
130	Capacity (Btu/hr)										17100	19600	22200	25100	28200	31500	35100
	Power (Watts)										3290	3260	3240	3210	3180	3150	3090
	Current (Amps)										3.6	3.6	3.6	3.6	3.6	3.6	3.5
	Flow Rate (lbs/hr)										258	294	332	372	415	461	509
	EER (Btu/Watt-hr)										5.2	6.0	6.9	7.8	8.9	10.0	11.2
140	Capacity (Btu/hr)											22100	25000	28000	31300	34900	38600
	Power (Watts)											3090	3200	3300	3380	3440	3490
	Current (Amps)											14.7	15.2	15.7	16.1	16.4	16.6
	Flow Rate (lbs/hr)											349	392	437	484	534	586
	EER (Btu/Watt-hr)											7.2	7.8	8.5	9.3	10.1	11.1
150	Capacity (Btu/hr)													28000	31300	34900	38600
	Power (Watts)													3300	3380	3440	3490
	Current (Amps)													15.7	16.1	16.4	16.6
	Flow Rate (lbs/hr)													437	484	534	586
	EER (Btu/Watt-hr)													8.5	9.3	10.1	11.1

* Specifications are subject to change without notice

Data Based on 575 volts

MODEL XGJ362HA

575 VOLTS, THREE PHASE, 60HZ, R-410A

NOMINAL PERFORMANCE AT ASRE/T 575 VOLTS

Capacity (Btu/hr)	36,700
EER (Btu/W-hr).....	10.3
Power (W).....	3,565
Current (A).....	4.1

RATING CONDITIONS AT ASRE/T

Condensing Temp. (Deg. F)	130
Evaporating Temp. (Deg. F)	45
Return Gas Temp. (Deg. F)	95
Liquid Temp. (Deg. F).....	115
Ambient Temp. (Deg. F)	95

MOTOR

Operating Voltage Range.....	517-633
Locked Rotor Amps.....	38.0
Maximum Continuous Current.....	8.5
Rated Load Amps.....	5.4

ELECTRICAL COMPONENTS

Motor Protector Type.....	Internal
Run Capacitor Type.....	N/A

OIL

Oil Type.....	POE / Hatco FRL 32ST
Initial Charge (oz.)	36
Re-Charge (oz.)	30

COMPRESSOR

Maximum Discharge Temp. (Deg. F)	280
Displacement (cu. in / rev).....	2.12
Weight (lbs.,Wet)	68.0
UL/CSA File #	SA11565

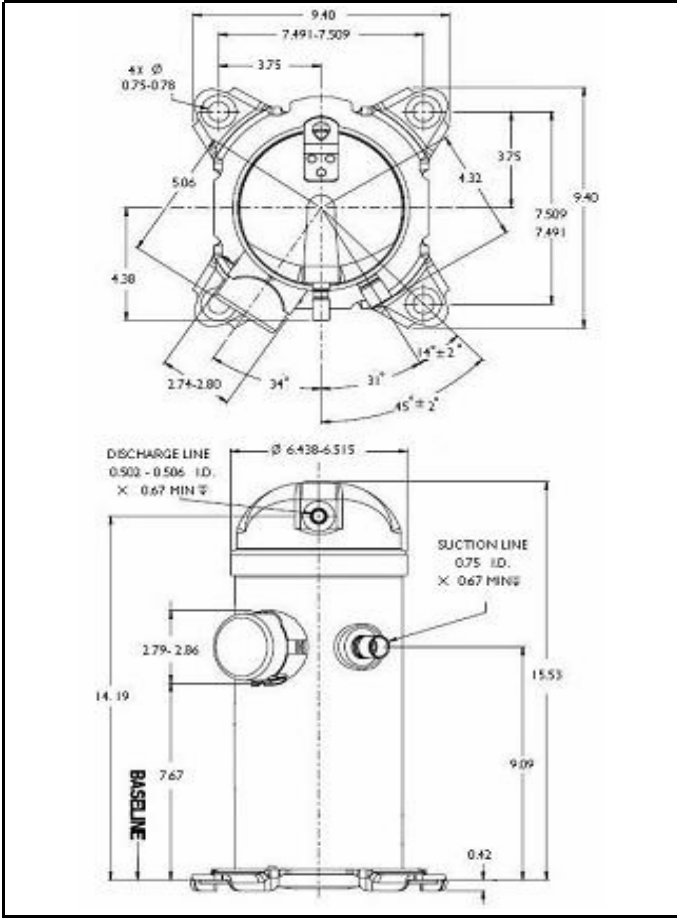
Specifications are subject to change without notice
 Nominal performance value +/- 5%
 Ratings generated with air over compressor

Carlyle Compressor Company

In the U.S.A. and Puerto Rico: 1-800-GO-CARLYLE (1-800-462-2759)
 Canada: 1-800-258-1123
 Mexico: 001-800-462-2759
 Fax: 315-432-3274

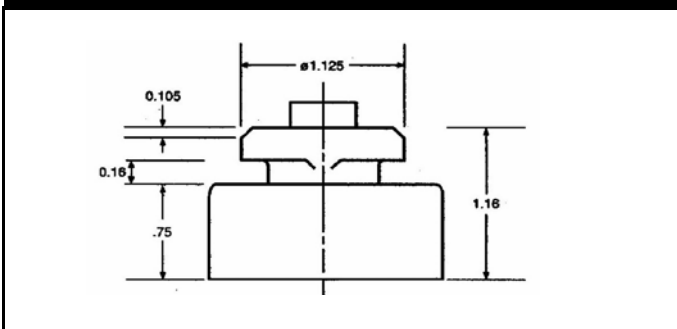
36700 Btu/hr

XG MODEL OUTLINE DIMENSIONS



Dimensions given in Inches

ISOLATOR MOUNTING DIAGRAM



MODEL: XGJ362HA **SUBCOOLING:** 15' F
VOLTAGE: 575-3-60 **SUPERHEAT:** 20' F
REFRIGERANT: R-410A **RATING DATE:** Aug-06



Saturated Condensing		Saturated Evaporating Temperature (Degrees F)															
		-20	-15	-10	-5	0	5	10	15	20	25	30	35	40	45	50	55
80	Capacity (Btu/hr)	9900	11500	13200	15300	17500	20100	22800	25900	29200	32900	36800	41100	45700	50600	55900	61600
	Power (Watts)	1950	1930	1920	1910	1900	1890	1890	1880	1870	1870	1860	1850	1840	1830	1820	1800
	Current (Amps)	2.6	2.6	2.6	2.6	2.6	2.6	2.6	2.6	2.6	2.6	2.6	2.6	2.6	2.5	2.5	2.5
	Flow Rate (lbs/hr)	121	139	159	182	207	236	267	300	337	377	421	467	517	570	627	687
	EER (Btu/Watt-hr)	5.1	5.9	6.9	8.0	9.2	10.6	12.1	13.8	15.6	17.6	19.8	22.2	24.8	27.6	30.7	34.2
90	Capacity (Btu/hr)		10300	12000	14000	16200	18600	21300	24200	27400	30900	34700	38800	43200	47900	52900	58300
	Power (Watts)		2250	2230	2220	2200	2190	2180	2160	2150	2140	2130	2110	2100	2080	2060	2040
	Current (Amps)		2.8	2.8	2.8	2.8	2.8	2.8	2.8	2.8	2.8	2.8	2.8	2.8	2.8	2.7	2.7
	Flow Rate (lbs/hr)		131	151	175	201	229	260	294	331	371	414	460	510	563	619	679
	EER (Btu/Watt-hr)		4.5	5.4	6.3	7.3	8.5	9.8	11.2	12.7	14.4	16.3	18.3	20.6	23.0	25.7	28.6
100	Capacity (Btu/hr)			10800	12700	14800	17100	19700	22500	25600	28900	32500	36400	40600	45100	49900	55100
	Power (Watts)			2590	2560	2540	2520	2500	2490	2470	2450	2430	2420	2400	2370	2350	2320
	Current (Amps)			3.1	3.1	3.1	3.1	3.1	3.1	3.1	3.1	3.0	3.0	3.0	3.0	3.0	2.9
	Flow Rate (lbs/hr)			143	167	193	222	254	288	325	365	408	454	503	556	612	672
	EER (Btu/Watt-hr)			4.2	4.9	5.8	6.8	7.9	9.1	10.4	11.8	13.4	15.1	16.9	19.0	21.2	23.7
110	Capacity (Btu/hr)				13400	15600	18100	20800	23700	26900	30300	34000	38000	42300	46900	51700	
	Power (Watts)				2930	2900	2880	2860	2830	2810	2790	2770	2740	2710	2690	2650	
	Current (Amps)				3.4	3.4	3.4	3.3	3.3	3.3	3.3	3.3	3.3	3.3	3.3	3.2	
	Flow Rate (lbs/hr)				185	214	246	280	318	358	401	447	497	549	605	664	
	EER (Btu/Watt-hr)				4.6	5.4	6.3	7.3	8.4	9.6	10.9	12.3	13.9	15.6	17.4	19.5	
120	Capacity (Btu/hr)						16400	19000	21800	24800	28000	31500	35300	39400	43700	48300	
	Power (Watts)						3300	3270	3250	3220	3190	3170	3140	3110	3080	3040	
	Current (Amps)						3.7	3.7	3.7	3.7	3.6	3.6	3.6	3.6	3.6	3.6	
	Flow Rate (lbs/hr)						236	271	309	349	393	439	488	541	597	656	
	EER (Btu/Watt-hr)						5.0	5.8	6.7	7.7	8.8	10.0	11.3	12.7	14.2	15.9	
130	Capacity (Btu/hr)								19700	22500	25600	28900	32500	36300	40400	44800	
	Power (Watts)								3720	3690	3660	3620	3590	3560	3520	3490	
	Current (Amps)								4.0	4.0	4.0	4.0	4.0	4.0	4.0	3.9	
	Flow Rate (lbs/hr)								298	339	382	429	478	531	586	645	
	EER (Btu/Watt-hr)								5.3	6.1	7.0	8.0	9.0	10.2	11.5	12.8	
140	Capacity (Btu/hr)										22100	25000	28000	31300	34900	38600	
	Power (Watts)										3090	3200	3300	3380	3440	3490	
	Current (Amps)										14.7	15.2	15.7	16.1	16.4	16.6	
	Flow Rate (lbs/hr)										349	392	437	484	534	586	
	EER (Btu/Watt-hr)										7.2	7.8	8.5	9.3	10.1	11.1	
150	Capacity (Btu/hr)											28000	31300	34900	38600		
	Power (Watts)											3300	3380	3440	3490		
	Current (Amps)											15.7	16.1	16.4	16.6		
	Flow Rate (lbs/hr)											437	484	534	586		
	EER (Btu/Watt-hr)											8.5	9.3	10.1	11.1		

* Specifications are subject to change without notice

Data Based on 575 volts

MODEL XGJ382HA

575 VOLTS, THREE PHASE, 60HZ, R-410A

NOMINAL PERFORMANCE AT ASRE/T 575 VOLTS

Capacity (Btu/hr)	38,300
EER (Btu/W-hr).....	10.1
Power (W).....	3,795
Current (A).....	5.5

RATING CONDITIONS AT ASRE/T

Condensing Temp. (Deg. F)	130
Evaporating Temp. (Deg. F)	45
Return Gas Temp. (Deg. F)	95
Liquid Temp. (Deg. F).....	115
Ambient Temp. (Deg. F)	95

MOTOR

Operating Voltage Range.....	517-633
Locked Rotor Amps.....	40.0
Maximum Continuous Current.....	9.5
Rated Load Amps.....	6.0

ELECTRICAL COMPONENTS

Motor Protector Type.....	Internal
Run Capacitor Type.....	N/A

OIL

Oil Type.....	POE / Hatco FRL 32ST
Initial Charge (oz.)	36
Re-Charge (oz.)	30

COMPRESSOR

Maximum Discharge Temp. (Deg. F)	280
Displacement (cu. in / rev).....	2.23
Weight (lbs.,Wet)	68.0
UL/CSA File #	SA11565

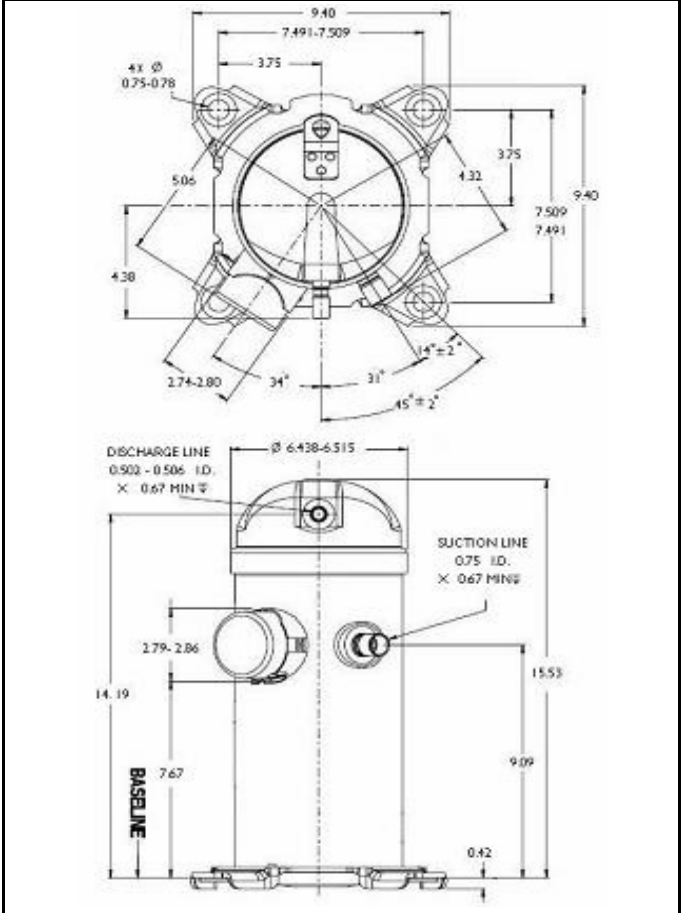
Specifications are subject to change without notice
 Nominal performance value +/- 5%
 Ratings generated with air over compressor

Carlyle Compressor Company

In the U.S.A. and Puerto Rico: 1-800-GO-CARLYLE (1-800-462-2759)
 Canada: 1-800-258-1123
 Mexico: 001-800-462-2759
 Fax: 315-432-3274

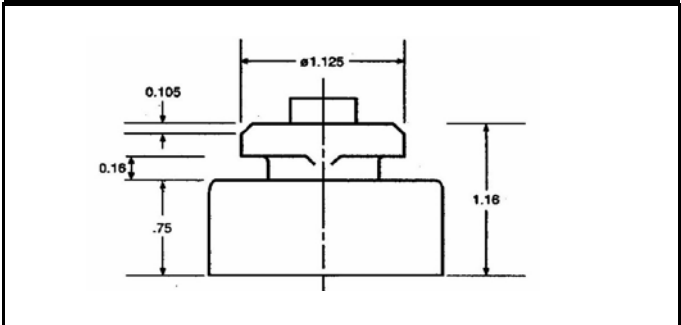
38300 Btu/hr

XG MODEL OUTLINE DIMENSIONS



Dimensions given in Inches

ISOLATOR MOUNTING DIAGRAM



MODEL: XGJ382HA **SUBCOOLING:** 15' F
VOLTAGE: 575-3-60 **SUPERHEAT:** 20' F
REFRIGERANT: R-410A **RATING DATE:** Aug-06



Saturated Condensing		Saturated Evaporating Temperature (Degrees F)																
		-20	-15	-10	-5	0	5	10	15	20	25	30	35	40	45	50	55	
80	Capacity (Btu/hr)	10300	11900	13800	15900	18200	20800	23700	26900	30400	34100	38200	42700	47400	52600	58000	63900	
	Power (Watts)	1980	1960	1940	1930	1920	1920	1910	1910	1900	1900	1890	1880	1870	1860	1840	1820	
	Current (Amps)	3.6	3.6	3.6	3.6	3.6	3.6	3.6	3.6	3.6	3.6	3.5	3.5	3.5	3.5	3.4	3.4	
	Flow Rate (lbs/hr)	126	144	165	189	215	245	277	312	350	392	437	485	536	592	650	713	
	EER (Btu/Watt-hr)	5.2	6.1	7.1	8.2	9.5	10.9	12.4	14.1	16.0	18.0	20.2	22.7	25.3	28.3	31.5	35.1	
90	Capacity (Btu/hr)		10700	12500	14500	16800	19300	22100	25100	28500	32100	36000	40300	44800	49700	55000	60600	
	Power (Watts)		2300	2280	2260	2250	2230	2220	2210	2200	2180	2170	2160	2140	2120	2100	2080	
	Current (Amps)		3.9	3.9	3.9	3.9	3.9	3.9	3.9	3.9	3.9	3.8	3.8	3.8	3.8	3.7	3.7	
	Flow Rate (lbs/hr)		136	157	182	208	238	270	306	344	386	430	478	530	585	643	705	
	EER (Btu/Watt-hr)		4.6	5.5	6.4	7.5	8.7	10.0	11.4	13.0	14.7	16.6	18.7	20.9	23.4	26.2	29.2	
100	Capacity (Btu/hr)			11200	13200	15400	17800	20500	23400	26600	30100	33800	37900	42200	46900	51900	57300	
	Power (Watts)			2670	2640	2620	2600	2580	2560	2540	2520	2510	2490	2470	2440	2420	2390	
	Current (Amps)			4.2	4.2	4.2	4.2	4.2	4.2	4.2	4.2	4.2	4.1	4.1	4.1	4.1	4.0	
	Flow Rate (lbs/hr)			149	174	201	231	264	299	338	379	424	472	524	578	637	698	
	EER (Btu/Watt-hr)			4.2	5.0	5.9	6.9	7.9	9.1	10.5	11.9	13.5	15.2	17.1	19.2	21.5	24.0	
110	Capacity (Btu/hr)					14000	16300	18800	21600	24700	28000	31600	35400	39600	44000	48800	53900	
	Power (Watts)					3050	3020	3000	2970	2950	2930	2900	2880	2850	2820	2790	2760	
	Current (Amps)					4.6	4.6	4.6	4.6	4.6	4.6	4.5	4.5	4.5	4.5	4.4	4.4	
	Flow Rate (lbs/hr)					192	223	256	292	331	373	418	466	517	572	630	692	
	EER (Btu/Watt-hr)					4.6	5.4	6.3	7.3	8.4	9.6	10.9	12.3	13.9	15.6	17.5	19.5	
120	Capacity (Btu/hr)								17100	19800	22700	25800	29200	32900	36800	41000	45600	50400
	Power (Watts)								3480	3450	3420	3390	3360	3330	3300	3270	3240	3200
	Current (Amps)								5.0	5.0	5.0	5.0	5.0	5.0	4.9	4.9	4.9	4.9
	Flow Rate (lbs/hr)								246	283	322	364	410	458	509	564	622	684
	EER (Btu/Watt-hr)								4.9	5.7	6.6	7.6	8.7	9.9	11.1	12.5	14.1	15.7
130	Capacity (Btu/hr)									20500	23500	26700	30200	33900	37900	42200	46700	
	Power (Watts)									3960	3930	3890	3860	3830	3790	3750	3710	
	Current (Amps)									5.5	5.5	5.5	5.5	5.4	5.4	5.4	5.4	
	Flow Rate (lbs/hr)									311	353	399	448	499	554	612	674	
	EER (Btu/Watt-hr)									5.2	6.0	6.9	7.8	8.9	10.0	11.2	12.6	
140	Capacity (Btu/hr)											22100	25000	28000	31300	34900	38600	
	Power (Watts)											3090	3200	3300	3380	3440	3490	
	Current (Amps)											14.7	15.2	15.7	16.1	16.4	16.6	
	Flow Rate (lbs/hr)											349	392	437	484	534	586	
	EER (Btu/Watt-hr)											7.2	7.8	8.5	9.3	10.1	11.1	
150	Capacity (Btu/hr)													28000	31300	34900	38600	
	Power (Watts)													3300	3380	3440	3490	
	Current (Amps)													15.7	16.1	16.4	16.6	
	Flow Rate (lbs/hr)													437	484	534	586	
	EER (Btu/Watt-hr)													8.5	9.3	10.1	11.1	

* Specifications are subject to change without notice

Data Based on 575 volts

MODEL XNJ442HA

575 VOLTS, THREE PHASE, 60HZ, R-410A

NOMINAL PERFORMANCE AT ASRE/T 575 VOLTS

Capacity (Btu/hr)	44,700
EER (Btu/W-hr).....	10.3
Power (W).....	4,360
Current (A).....	4.1

RATING CONDITIONS AT ASRE/T

Condensing Temp. (Deg. F)	130
Evaporating Temp. (Deg. F)	45
Return Gas Temp. (Deg. F)	95
Liquid Temp. (Deg. F).....	115
Ambient Temp. (Deg. F)	95

MOTOR

Operating Voltage Range.....	517-633
Locked Rotor Amps.....	42.0
Maximum Continuous Current.....	10.5
Rated Load Amps.....	6.7

ELECTRICAL COMPONENTS

Motor Protector Type.....	Internal
Run Capacitor Type.....	N/A

OIL

Oil Type.....	POE / Hatco FRL 32ST
Initial Charge (oz.)	53
Re-Charge (oz.)	44

COMPRESSOR

Maximum Discharge Temp. (Deg. F)	280
Displacement (cu. in / rev).....	2.60
Weight (lbs.,Wet)	82.0
UL/CSA File #	SA11565

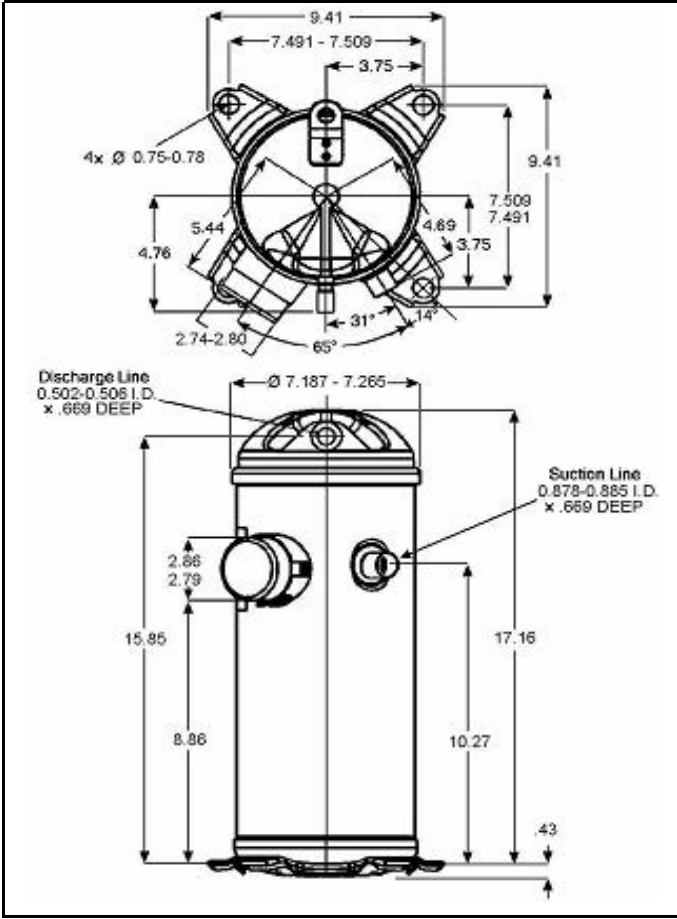
Specifications are subject to change without notice
 Nominal performance value +/- 5%
 Ratings generated with air over compressor

Carlyle Compressor Company

In the U.S.A. and Puerto Rico: 1-800-GO-CARLYLE (1-800-462-2759)
 Canada: 1-800-258-1123
 Mexico: 001-800-462-2759
 Fax: 315-432-3274

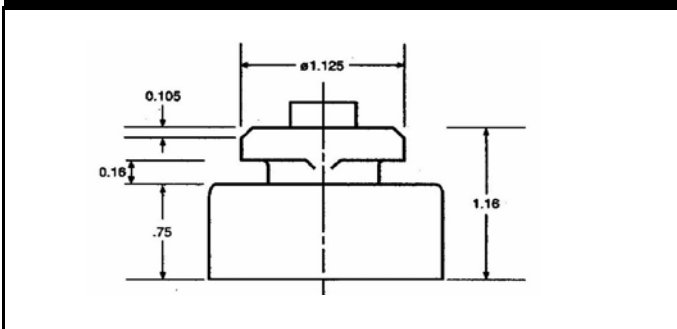
44700 Btu/hr

XN MODEL OUTLINE DIMENSIONS



Dimensions given in Inches

ISOLATOR MOUNTING DIAGRAM



MODEL: XNJ442HA **SUBCOOLING:** 15' F
VOLTAGE: 575-3-60 **SUPERHEAT:** 20' F
REFRIGERANT: R-410A **RATING DATE:** Aug-06



Saturated Condensing		Saturated Evaporating Temperature (Degrees F)															
		-20	-15	-10	-5	0	5	10	15	20	25	30	35	40	45	50	55
80	Capacity (Btu/hr)	12000	13900	16000	18500	21200	24300	27700	31400	35400	39800	44600	49800	55300	61300	67700	74500
	Power (Watts)	2390	2370	2360	2340	2330	2320	2320	2310	2300	2300	2290	2280	2270	2250	2240	2220
	Current (Amps)	2.6	2.6	2.6	2.6	2.6	2.6	2.6	2.6	2.6	2.6	2.6	2.6	2.6	2.5	2.5	2.5
	Flow Rate (lbs/hr)	146	168	193	220	251	285	323	364	408	457	509	565	625	690	758	831
	EER (Btu/Watt-hr)	5.0	5.8	6.8	7.9	9.1	10.4	11.9	13.6	15.4	17.3	19.5	21.8	24.4	27.2	30.3	33.6
90	Capacity (Btu/hr)		12400	14500	16900	19600	22500	25800	29300	33200	37500	42000	47000	52300	58000	64100	70600
	Power (Watts)		2770	2740	2720	2700	2690	2670	2660	2640	2630	2610	2600	2580	2560	2530	2510
	Current (Amps)		2.8	2.8	2.8	2.8	2.8	2.8	2.8	2.8	2.8	2.8	2.8	2.8	2.8	2.7	2.7
	Flow Rate (lbs/hr)		158	184	212	243	277	315	357	401	450	502	558	618	682	750	823
	EER (Btu/Watt-hr)		4.5	5.3	6.2	7.2	8.4	9.6	11.0	12.6	14.3	16.1	18.1	20.3	22.7	25.3	28.2
100	Capacity (Btu/hr)			13100	15400	18000	20800	23900	27300	31100	35100	39500	44200	49300	54700	60600	66800
	Power (Watts)			3180	3150	3120	3100	3070	3050	3030	3010	2990	2960	2940	2910	2880	2850
	Current (Amps)			3.1	3.1	3.1	3.1	3.1	3.1	3.1	3.1	3.0	3.0	3.0	3.0	3.0	2.9
	Flow Rate (lbs/hr)			174	203	235	270	308	349	394	443	495	551	611	675	743	815
	EER (Btu/Watt-hr)			4.1	4.9	5.8	6.7	7.8	9.0	10.2	11.7	13.2	14.9	16.8	18.8	21.0	23.4
110	Capacity (Btu/hr)				16300	19000	22000	25300	28800	32700	36900	41400	46200	51400	57000	62900	
	Power (Watts)				3590	3560	3530	3500	3470	3450	3420	3390	3360	3330	3290	3250	
	Current (Amps)				3.4	3.4	3.4	3.3	3.3	3.3	3.3	3.3	3.3	3.3	3.3	3.2	
	Flow Rate (lbs/hr)				225	260	299	341	386	435	488	544	604	668	736	808	
	EER (Btu/Watt-hr)				4.5	5.3	6.2	7.2	8.3	9.5	10.8	12.2	13.8	15.5	17.3	19.3	
120	Capacity (Btu/hr)						20000	23100	26500	30200	34200	38400	43000	48000	53200	58900	
	Power (Watts)						4040	4010	3980	3940	3910	3880	3840	3810	3770	3720	
	Current (Amps)						3.7	3.7	3.7	3.7	3.6	3.6	3.6	3.6	3.6	3.6	
	Flow Rate (lbs/hr)						288	331	377	426	479	535	595	659	727	799	
	EER (Btu/Watt-hr)						4.9	5.8	6.7	7.7	8.7	9.9	11.2	12.6	14.1	15.8	
130	Capacity (Btu/hr)								24000	27500	31300	35300	39700	44300	49300	54700	
	Power (Watts)								4550	4510	4470	4430	4390	4350	4310	4260	
	Current (Amps)								4.0	4.0	4.0	4.0	4.0	4.0	4.0	3.9	
	Flow Rate (lbs/hr)								364	413	467	523	584	648	716	788	
	EER (Btu/Watt-hr)								5.3	6.1	7.0	8.0	9.0	10.2	11.4	12.8	
140	Capacity (Btu/hr)										22100	25000	28000	31300	34900	38600	
	Power (Watts)										3090	3200	3300	3380	3440	3490	
	Current (Amps)										14.7	15.2	15.7	16.1	16.4	16.6	
	Flow Rate (lbs/hr)										349	392	437	484	534	586	
	EER (Btu/Watt-hr)										7.2	7.8	8.5	9.3	10.1	11.1	
150	Capacity (Btu/hr)												28000	31300	34900	38600	
	Power (Watts)												3300	3380	3440	3490	
	Current (Amps)												15.7	16.1	16.4	16.6	
	Flow Rate (lbs/hr)												437	484	534	586	
	EER (Btu/Watt-hr)												8.5	9.3	10.1	11.1	

* Specifications are subject to change without notice

Data Based on 575 volts

MODEL XNJ442HE

575 VOLTS, THREE PHASE, 60HZ, R-410A

NOMINAL PERFORMANCE AT ASRE/T 575 VOLTS

Capacity (Btu/hr)	44,700
EER (Btu/W-hr).....	10.3
Power (W).....	4,360
Current (A).....	4.1

RATING CONDITIONS AT ASRE/T

Condensing Temp. (Deg. F)	130
Evaporating Temp. (Deg. F)	45
Return Gas Temp. (Deg. F)	95
Liquid Temp. (Deg. F).....	115
Ambient Temp. (Deg. F)	95

MOTOR

Operating Voltage Range.....	517-633
Locked Rotor Amps.....	42.0
Maximum Continuous Current.....	10.5
Rated Load Amps.....	6.7

ELECTRICAL COMPONENTS

Motor Protector Type.....	Internal
Run Capacitor Type.....	N/A

OIL

Oil Type.....	POE / Hatco FRL 32ST
Initial Charge (oz.)	53
Re-Charge (oz.)	44

COMPRESSOR

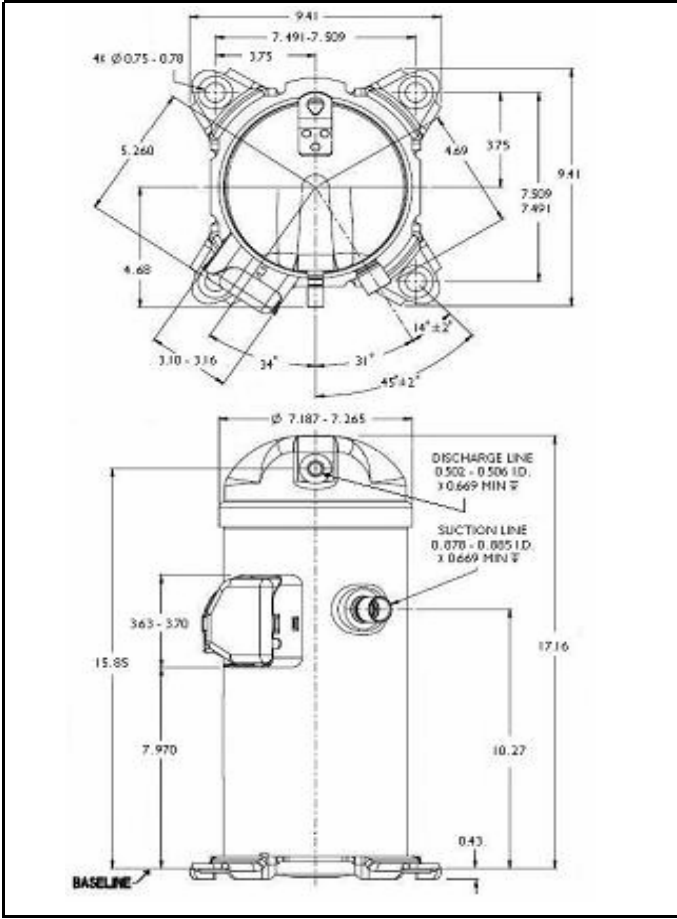
Maximum Discharge Temp. (Deg. F)	280
Displacement (cu. in / rev).....	2.60
Weight (lbs.,Wet)	82.0
UL/CSA File #.....	SA11565

Specifications are subject to change without notice
 Nominal performance value +/- 5%
 Ratings generated with air over compressor

Carlyle Compressor Company

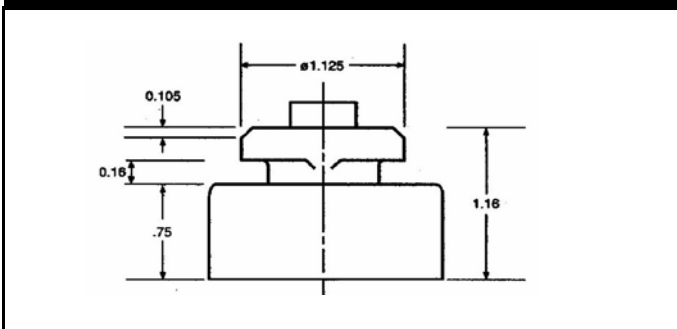
In the U.S.A. and Puerto Rico: 1-800-GO-CARLYLE (1-800-462-2759)
 Canada: 1-800-258-1123
 Mexico: 001-800-462-2759
 Fax: 315-432-3274

XN MODEL OUTLINE DIMENSIONS



Dimensions given in Inches

ISOLATOR MOUNTING DIAGRAM



44700 Btu/hr

MODEL: XNJ442HE **SUBCOOLING:** 15' F
VOLTAGE: 575-3-60 **SUPERHEAT:** 20' F
REFRIGERANT: R-410A **RATING DATE:** Aug-06



Saturated Condensing		Saturated Evaporating Temperature (Degrees F)															
		-20	-15	-10	-5	0	5	10	15	20	25	30	35	40	45	50	55
80	Capacity (Btu/hr)	12000	13900	16000	18500	21200	24300	27700	31400	35400	39800	44600	49800	55300	61300	67700	74500
	Power (Watts)	2390	2370	2360	2340	2330	2320	2320	2310	2300	2300	2290	2280	2270	2250	2240	2220
	Current (Amps)	2.6	2.6	2.6	2.6	2.6	2.6	2.6	2.6	2.6	2.6	2.6	2.6	2.6	2.5	2.5	2.5
	Flow Rate (lbs/hr)	146	168	193	220	251	285	323	364	408	457	509	565	625	690	758	831
	EER (Btu/Watt-hr)	5.0	5.8	6.8	7.9	9.1	10.4	11.9	13.6	15.4	17.3	19.5	21.8	24.4	27.2	30.3	33.6
90	Capacity (Btu/hr)		12400	14500	16900	19600	22500	25800	29300	33200	37500	42000	47000	52300	58000	64100	70600
	Power (Watts)		2770	2740	2720	2700	2690	2670	2660	2640	2630	2610	2600	2580	2560	2530	2510
	Current (Amps)		2.8	2.8	2.8	2.8	2.8	2.8	2.8	2.8	2.8	2.8	2.8	2.8	2.8	2.7	2.7
	Flow Rate (lbs/hr)		158	184	212	243	277	315	357	401	450	502	558	618	682	750	823
	EER (Btu/Watt-hr)		4.5	5.3	6.2	7.2	8.4	9.6	11.0	12.6	14.3	16.1	18.1	20.3	22.7	25.3	28.2
100	Capacity (Btu/hr)			13100	15400	18000	20800	23900	27300	31100	35100	39500	44200	49300	54700	60600	66800
	Power (Watts)			3180	3150	3120	3100	3070	3050	3030	3010	2990	2960	2940	2910	2880	2850
	Current (Amps)			3.1	3.1	3.1	3.1	3.1	3.1	3.1	3.1	3.0	3.0	3.0	3.0	3.0	2.9
	Flow Rate (lbs/hr)			174	203	235	270	308	349	394	443	495	551	611	675	743	815
	EER (Btu/Watt-hr)			4.1	4.9	5.8	6.7	7.8	9.0	10.2	11.7	13.2	14.9	16.8	18.8	21.0	23.4
110	Capacity (Btu/hr)				16300	19000	22000	25300	28800	32700	36900	41400	46200	51400	57000	62900	
	Power (Watts)				3590	3560	3530	3500	3470	3450	3420	3390	3360	3330	3290	3250	
	Current (Amps)				3.4	3.4	3.4	3.3	3.3	3.3	3.3	3.3	3.3	3.3	3.3	3.2	
	Flow Rate (lbs/hr)				225	260	299	341	386	435	488	544	604	668	736	808	
	EER (Btu/Watt-hr)				4.5	5.3	6.2	7.2	8.3	9.5	10.8	12.2	13.8	15.5	17.3	19.3	
120	Capacity (Btu/hr)						20000	23100	26500	30200	34200	38400	43000	48000	53200	58900	
	Power (Watts)						4040	4010	3980	3940	3910	3880	3840	3810	3770	3720	
	Current (Amps)						3.7	3.7	3.7	3.7	3.6	3.6	3.6	3.6	3.6	3.6	
	Flow Rate (lbs/hr)						288	331	377	426	479	535	595	659	727	799	
	EER (Btu/Watt-hr)						4.9	5.8	6.7	7.7	8.7	9.9	11.2	12.6	14.1	15.8	
130	Capacity (Btu/hr)								24000	27500	31300	35300	39700	44300	49300	54700	
	Power (Watts)								4550	4510	4470	4430	4390	4350	4310	4260	
	Current (Amps)								4.0	4.0	4.0	4.0	4.0	4.0	4.0	3.9	
	Flow Rate (lbs/hr)								364	413	467	523	584	648	716	788	
	EER (Btu/Watt-hr)								5.3	6.1	7.0	8.0	9.0	10.2	11.4	12.8	
140	Capacity (Btu/hr)										22100	25000	28000	31300	34900	38600	
	Power (Watts)										3090	3200	3300	3380	3440	3490	
	Current (Amps)										14.7	15.2	15.7	16.1	16.4	16.6	
	Flow Rate (lbs/hr)										349	392	437	484	534	586	
	EER (Btu/Watt-hr)										7.2	7.8	8.5	9.3	10.1	11.1	
150	Capacity (Btu/hr)												28000	31300	34900	38600	
	Power (Watts)												3300	3380	3440	3490	
	Current (Amps)												15.7	16.1	16.4	16.6	
	Flow Rate (lbs/hr)												437	484	534	586	
	EER (Btu/Watt-hr)												8.5	9.3	10.1	11.1	

* Specifications are subject to change without notice

Data Based on 575 volts

MODEL XNJ442HU

575 VOLTS, THREE PHASE, 60HZ, R-410A

NOMINAL PERFORMANCE AT ASRE/T 575 VOLTS

Capacity (Btu/hr)	44,700
EER (Btu/W-hr).....	10.3
Power (W).....	4,360
Current (A).....	4.1

RATING CONDITIONS AT ASRE/T

Condensing Temp. (Deg. F)	130
Evaporating Temp. (Deg. F)	45
Return Gas Temp. (Deg. F)	95
Liquid Temp. (Deg. F).....	115
Ambient Temp. (Deg. F)	95

MOTOR

Operating Voltage Range.....	517-633
Locked Rotor Amps.....	42.0
Maximum Continuous Current.....	10.5
Rated Load Amps.....	6.7

ELECTRICAL COMPONENTS

Motor Protector Type.....	Internal
Run Capacitor Type.....	N/A

OIL

Oil Type.....	POE / Hatco FRL 32ST
Initial Charge (oz.)	53
Re-Charge (oz.)	44

COMPRESSOR

Maximum Discharge Temp. (Deg. F)	280
Displacement (cu. in / rev).....	2.60
Weight (lbs.,Wet)	82.0
UL/CSA File #	SA11565

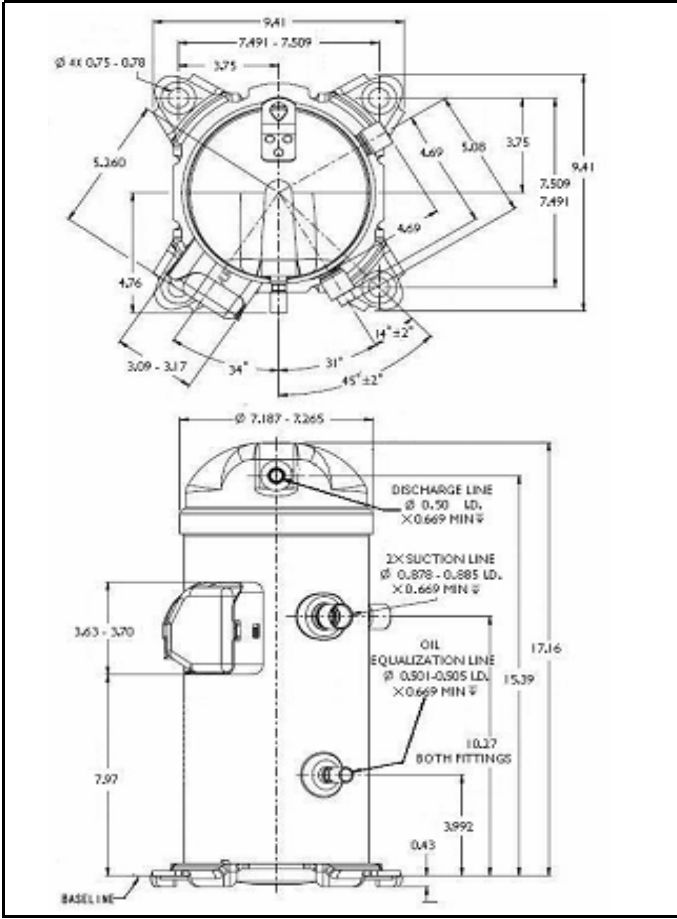
Specifications are subject to change without notice
 Nominal performance value +/- 5%
 Ratings generated with air over compressor

Carlyle Compressor Company

In the U.S.A. and Puerto Rico: 1-800-GO-CARLYLE (1-800-462-2759)
 Canada: 1-800-258-1123
 Mexico: 001-800-462-2759
 Fax: 315-432-3274

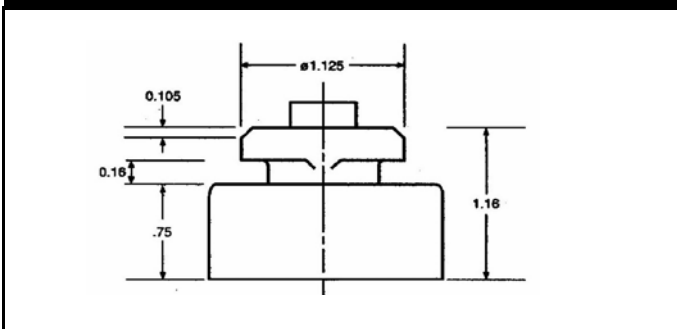
44700 Btu/hr

XN MODEL OUTLINE DIMENSIONS



Dimensions given in Inches

ISOLATOR MOUNTING DIAGRAM



MODEL: XNJ442HU **SUBCOOLING:** 15' F
VOLTAGE: 575-3-60 **SUPERHEAT:** 20' F
REFRIGERANT: R-410A **RATING DATE:** Aug-06



Saturated Condensing		Saturated Evaporating Temperature (Degrees F)															
		-20	-15	-10	-5	0	5	10	15	20	25	30	35	40	45	50	55
80	Capacity (Btu/hr)	12000	13900	16000	18500	21200	24300	27700	31400	35400	39800	44600	49800	55300	61300	67700	74500
	Power (Watts)	2390	2370	2360	2340	2330	2320	2320	2310	2300	2300	2290	2280	2270	2250	2240	2220
	Current (Amps)	2.6	2.6	2.6	2.6	2.6	2.6	2.6	2.6	2.6	2.6	2.6	2.6	2.6	2.5	2.5	2.5
	Flow Rate (lbs/hr)	146	168	193	220	251	285	323	364	408	457	509	565	625	690	758	831
	EER (Btu/Watt-hr)	5.0	5.8	6.8	7.9	9.1	10.4	11.9	13.6	15.4	17.3	19.5	21.8	24.4	27.2	30.3	33.6
90	Capacity (Btu/hr)		12400	14500	16900	19600	22500	25800	29300	33200	37500	42000	47000	52300	58000	64100	70600
	Power (Watts)		2770	2740	2720	2700	2690	2670	2660	2640	2630	2610	2600	2580	2560	2530	2510
	Current (Amps)		2.8	2.8	2.8	2.8	2.8	2.8	2.8	2.8	2.8	2.8	2.8	2.8	2.8	2.7	2.7
	Flow Rate (lbs/hr)		158	184	212	243	277	315	357	401	450	502	558	618	682	750	823
	EER (Btu/Watt-hr)		4.5	5.3	6.2	7.2	8.4	9.6	11.0	12.6	14.3	16.1	18.1	20.3	22.7	25.3	28.2
100	Capacity (Btu/hr)			13100	15400	18000	20800	23900	27300	31100	35100	39500	44200	49300	54700	60600	66800
	Power (Watts)			3180	3150	3120	3100	3070	3050	3030	3010	2990	2960	2940	2910	2880	2850
	Current (Amps)			3.1	3.1	3.1	3.1	3.1	3.1	3.1	3.1	3.0	3.0	3.0	3.0	3.0	2.9
	Flow Rate (lbs/hr)			174	203	235	270	308	349	394	443	495	551	611	675	743	815
	EER (Btu/Watt-hr)			4.1	4.9	5.8	6.7	7.8	9.0	10.2	11.7	13.2	14.9	16.8	18.8	21.0	23.4
110	Capacity (Btu/hr)				16300	19000	22000	25300	28800	32700	36900	41400	46200	51400	57000	62900	
	Power (Watts)				3590	3560	3530	3500	3470	3450	3420	3390	3360	3330	3290	3250	
	Current (Amps)				3.4	3.4	3.4	3.3	3.3	3.3	3.3	3.3	3.3	3.3	3.3	3.2	
	Flow Rate (lbs/hr)				225	260	299	341	386	435	488	544	604	668	736	808	
	EER (Btu/Watt-hr)				4.5	5.3	6.2	7.2	8.3	9.5	10.8	12.2	13.8	15.5	17.3	19.3	
120	Capacity (Btu/hr)						20000	23100	26500	30200	34200	38400	43000	48000	53200	58900	
	Power (Watts)						4040	4010	3980	3940	3910	3880	3840	3810	3770	3720	
	Current (Amps)						3.7	3.7	3.7	3.7	3.6	3.6	3.6	3.6	3.6	3.6	
	Flow Rate (lbs/hr)						288	331	377	426	479	535	595	659	727	799	
	EER (Btu/Watt-hr)						4.9	5.8	6.7	7.7	8.7	9.9	11.2	12.6	14.1	15.8	
130	Capacity (Btu/hr)								24000	27500	31300	35300	39700	44300	49300	54700	
	Power (Watts)								4550	4510	4470	4430	4390	4350	4310	4260	
	Current (Amps)								4.0	4.0	4.0	4.0	4.0	4.0	4.0	3.9	
	Flow Rate (lbs/hr)								364	413	467	523	584	648	716	788	
	EER (Btu/Watt-hr)								5.3	6.1	7.0	8.0	9.0	10.2	11.4	12.8	
140	Capacity (Btu/hr)										22100	25000	28000	31300	34900	38600	
	Power (Watts)										3090	3200	3300	3380	3440	3490	
	Current (Amps)										14.7	15.2	15.7	16.1	16.4	16.6	
	Flow Rate (lbs/hr)										349	392	437	484	534	586	
	EER (Btu/Watt-hr)										7.2	7.8	8.5	9.3	10.1	11.1	
150	Capacity (Btu/hr)												28000	31300	34900	38600	
	Power (Watts)												3300	3380	3440	3490	
	Current (Amps)												15.7	16.1	16.4	16.6	
	Flow Rate (lbs/hr)												437	484	534	586	
	EER (Btu/Watt-hr)												8.5	9.3	10.1	11.1	

* Specifications are subject to change without notice

Data Based on 575 volts

MODEL XNJ492HA

575 VOLTS, THREE PHASE, 60HZ, R-410A

NOMINAL PERFORMANCE AT ASRE/T 575 VOLTS

Capacity (Btu/hr)	49,300
EER (Btu/W-hr).....	10.4
Power (W).....	4,740
Current (A).....	4.2

RATING CONDITIONS AT ASRE/T

Condensing Temp. (Deg. F)	130
Evaporating Temp. (Deg. F)	45
Return Gas Temp. (Deg. F)	95
Liquid Temp. (Deg. F).....	115
Ambient Temp. (Deg. F)	95

MOTOR

Operating Voltage Range.....	517-633
Locked Rotor Amps.....	42.0
Maximum Continuous Current.....	9.1
Rated Load Amps.....	6.7

ELECTRICAL COMPONENTS

Motor Protector Type.....	Internal
Run Capacitor Type.....	N/A

OIL

Oil Type.....	POE / Hatco FRL 32ST
Initial Charge (oz.)	53
Re-Charge (oz.)	44

COMPRESSOR

Maximum Discharge Temp. (Deg. F)	280
Displacement (cu. in / rev).....	2.89
Weight (lbs.,Wet)	82.0
UL/CSA File #	SA11565

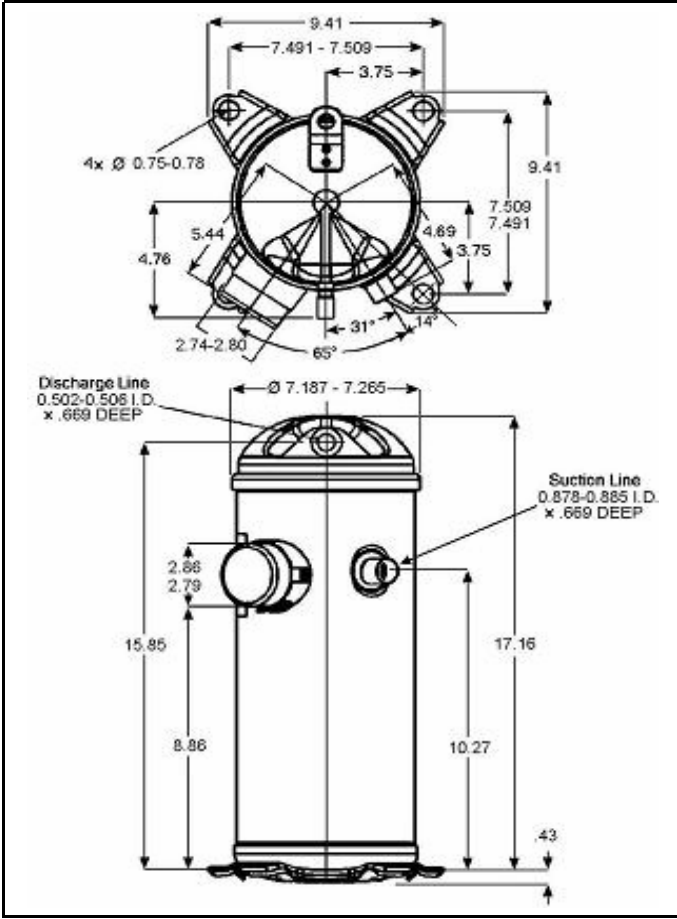
Specifications are subject to change without notice
 Nominal performance value +/- 5%
 Ratings generated with air over compressor

Carlyle Compressor Company

In the U.S.A. and Puerto Rico: 1-800-GO-CARLYLE (1-800-462-2759)
 Canada: 1-800-258-1123
 Mexico: 001-800-462-2759
 Fax: 315-432-3274

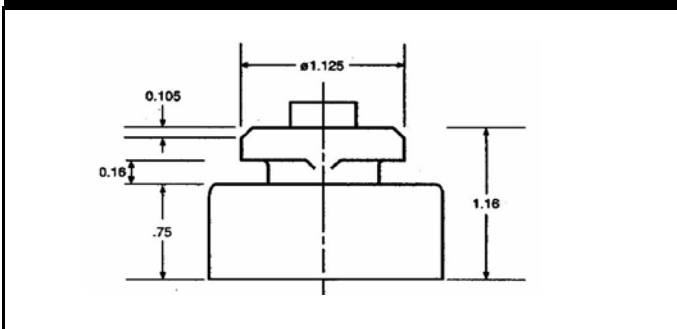
49300 Btu/hr

XN MODEL OUTLINE DIMENSIONS



Dimensions given in Inches

ISOLATOR MOUNTING DIAGRAM



MODEL: XNJ492HA **SUBCOOLING:** 15' F
VOLTAGE: 575-3-60 **SUPERHEAT:** 20' F
REFRIGERANT: R-410A **RATING DATE:** Aug-06



Saturated Condensing		Saturated Evaporating Temperature (Degrees F)															
		-20	-15	-10	-5	0	5	10	15	20	25	30	35	40	45	50	55
80	Capacity (Btu/hr)	13300	15400	17800	20500	23500	26900	30600	34700	39200	44100	49400	55100	61300	67900	75000	82500
	Power (Watts)	2620	2600	2580	2570	2560	2550	2540	2530	2520	2520	2510	2500	2480	2470	2450	2430
	Current (Amps)	2.7	2.7	2.7	2.7	2.7	2.7	2.7	2.7	2.7	2.7	2.7	2.7	2.6	2.6	2.6	2.5
	Flow Rate (lbs/hr)	162	186	213	244	278	316	358	403	452	506	564	626	693	764	840	921
	EER (Btu/Watt-hr)	5.1	5.9	6.9	8.0	9.2	10.6	12.1	13.7	15.5	17.5	19.7	22.1	24.7	27.5	30.6	34.0
90	Capacity (Btu/hr)		13800	16100	18700	21700	25000	28500	32500	36800	41500	46600	52000	57900	64300	71000	78300
	Power (Watts)		3030	3010	2980	2960	2940	2930	2910	2890	2880	2860	2840	2820	2800	2770	2750
	Current (Amps)		2.9	2.9	2.9	2.9	2.9	2.9	2.9	2.9	2.9	2.9	2.9	2.9	2.8	2.8	2.8
	Flow Rate (lbs/hr)		175	203	235	269	307	349	395	444	498	556	618	684	755	831	911
	EER (Btu/Watt-hr)		4.5	5.4	6.3	7.3	8.5	9.8	11.2	12.7	14.4	16.3	18.3	20.5	22.9	25.6	28.5
100	Capacity (Btu/hr)			14500	17000	19900	23000	26500	30300	34400	38900	43700	48900	54600	60600	67100	74000
	Power (Watts)			3480	3450	3420	3390	3370	3340	3320	3300	3270	3250	3220	3190	3160	3120
	Current (Amps)			3.2	3.2	3.2	3.2	3.2	3.2	3.2	3.2	3.1	3.1	3.1	3.1	3.1	3.0
	Flow Rate (lbs/hr)			193	224	260	298	341	387	437	490	548	610	677	747	823	902
	EER (Btu/Watt-hr)			4.2	4.9	5.8	6.8	7.9	9.1	10.4	11.8	13.4	15.1	17.0	19.0	21.2	23.7
110	Capacity (Btu/hr)				18000	21100	24400	28000	31900	36200	40800	45800	51100	56900	63000	69600	
	Power (Watts)				3930	3890	3860	3830	3800	3770	3740	3710	3680	3640	3600	3560	
	Current (Amps)				3.5	3.5	3.5	3.5	3.5	3.4	3.4	3.4	3.4	3.4	3.4	3.3	
	Flow Rate (lbs/hr)				249	288	331	377	428	482	540	602	668	739	814	894	
	EER (Btu/Watt-hr)				4.6	5.4	6.3	7.3	8.4	9.6	10.9	12.3	13.9	15.6	17.5	19.6	
120	Capacity (Btu/hr)					22100	25600	29300	33400	37800	42500	47600	53000	58900	65100		
	Power (Watts)					4420	4380	4350	4310	4280	4240	4200	4160	4120	4070		
	Current (Amps)					3.8	3.8	3.8	3.8	3.8	3.7	3.7	3.7	3.7	3.7		
	Flow Rate (lbs/hr)					319	366	416	471	529	592	658	729	804	884		
	EER (Btu/Watt-hr)					5.0	5.8	6.7	7.7	8.8	10.0	11.3	12.7	14.3	16.0		
130	Capacity (Btu/hr)							26600	30400	34600	39000	43900	49000	54500	60400		
	Power (Watts)							4970	4930	4890	4850	4800	4760	4710	4660		
	Current (Amps)							4.2	4.2	4.2	4.1	4.1	4.1	4.1	4.1		
	Flow Rate (lbs/hr)							402	457	516	579	645	716	792	871		
	EER (Btu/Watt-hr)							5.3	6.2	7.1	8.1	9.1	10.3	11.6	13.0		
140	Capacity (Btu/hr)									22100	25000	28000	31300	34900	38600		
	Power (Watts)									3090	3200	3300	3380	3440	3490		
	Current (Amps)									14.7	15.2	15.7	16.1	16.4	16.6		
	Flow Rate (lbs/hr)									349	392	437	484	534	586		
	EER (Btu/Watt-hr)									7.2	7.8	8.5	9.3	10.1	11.1		
150	Capacity (Btu/hr)											28000	31300	34900	38600		
	Power (Watts)											3300	3380	3440	3490		
	Current (Amps)											15.7	16.1	16.4	16.6		
	Flow Rate (lbs/hr)											437	484	534	586		
	EER (Btu/Watt-hr)											8.5	9.3	10.1	11.1		

* Specifications are subject to change without notice

Data Based on 575 volts

MODEL XNJ492HE

575 VOLTS, THREE PHASE, 60HZ, R-410A

NOMINAL PERFORMANCE AT ASRE/T 575 VOLTS

Capacity (Btu/hr)	49,300
EER (Btu/W-hr).....	10.4
Power (W).....	4,740
Current (A).....	4.2

RATING CONDITIONS AT ASRE/T

Condensing Temp. (Deg. F)	130
Evaporating Temp. (Deg. F)	45
Return Gas Temp. (Deg. F)	95
Liquid Temp. (Deg. F).....	115
Ambient Temp. (Deg. F)	95

MOTOR

Operating Voltage Range.....	517-633
Locked Rotor Amps.....	42.0
Maximum Continuous Current.....	9.1
Rated Load Amps.....	6.7

ELECTRICAL COMPONENTS

Motor Protector Type.....	Internal
Run Capacitor Type.....	N/A

OIL

Oil Type.....	POE / Hatco FRL 32ST
Initial Charge (oz.)	53
Re-Charge (oz.)	44

COMPRESSOR

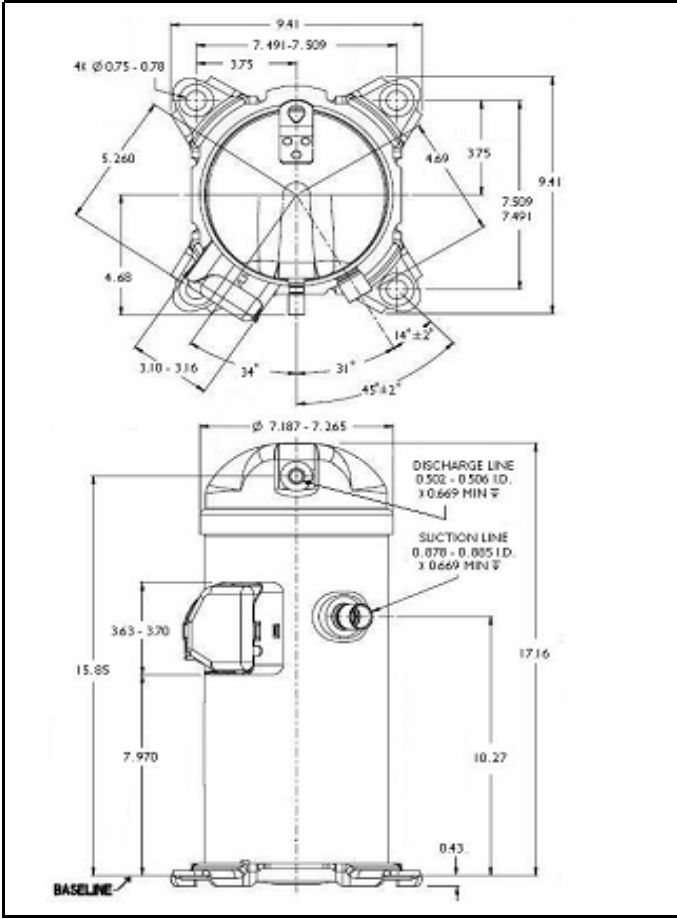
Maximum Discharge Temp. (Deg. F)	280
Displacement (cu. in / rev).....	2.89
Weight (lbs.,Wet)	82.0
UL/CSA File #	SA11565

Specifications are subject to change without notice
 Nominal performance value +/- 5%
 Ratings generated with air over compressor

Carlyle Compressor Company

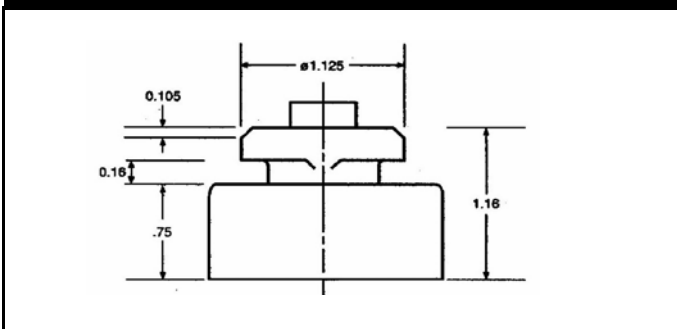
In the U.S.A. and Puerto Rico: 1-800-GO-CARLYLE (1-800-462-2759)
 Canada: 1-800-258-1123
 Mexico: 001-800-462-2759
 Fax: 315-432-3274

XN MODEL OUTLINE DIMENSIONS



Dimensions given in Inches

ISOLATOR MOUNTING DIAGRAM



49300 Btu/hr

MODEL: XNJ492HE **SUBCOOLING:** 15' F
VOLTAGE: 575-3-60 **SUPERHEAT:** 20' F
REFRIGERANT: R-410A **RATING DATE:** Aug-06



Saturated Condensing		Saturated Evaporating Temperature (Degrees F)															
		-20	-15	-10	-5	0	5	10	15	20	25	30	35	40	45	50	55
80	Capacity (Btu/hr)	13300	15400	17800	20500	23500	26900	30600	34700	39200	44100	49400	55100	61300	67900	75000	82500
	Power (Watts)	2620	2600	2580	2570	2560	2550	2540	2530	2520	2520	2510	2500	2480	2470	2450	2430
	Current (Amps)	2.7	2.7	2.7	2.7	2.7	2.7	2.7	2.7	2.7	2.7	2.7	2.7	2.6	2.6	2.6	2.5
	Flow Rate (lbs/hr)	162	186	213	244	278	316	358	403	452	506	564	626	693	764	840	921
	EER (Btu/Watt-hr)	5.1	5.9	6.9	8.0	9.2	10.6	12.1	13.7	15.5	17.5	19.7	22.1	24.7	27.5	30.6	34.0
90	Capacity (Btu/hr)		13800	16100	18700	21700	25000	28500	32500	36800	41500	46600	52000	57900	64300	71000	78300
	Power (Watts)		3030	3010	2980	2960	2940	2930	2910	2890	2880	2860	2840	2820	2800	2770	2750
	Current (Amps)		2.9	2.9	2.9	2.9	2.9	2.9	2.9	2.9	2.9	2.9	2.9	2.9	2.8	2.8	2.8
	Flow Rate (lbs/hr)		175	203	235	269	307	349	395	444	498	556	618	684	755	831	911
	EER (Btu/Watt-hr)		4.5	5.4	6.3	7.3	8.5	9.8	11.2	12.7	14.4	16.3	18.3	20.5	22.9	25.6	28.5
100	Capacity (Btu/hr)			14500	17000	19900	23000	26500	30300	34400	38900	43700	48900	54600	60600	67100	74000
	Power (Watts)			3480	3450	3420	3390	3370	3340	3320	3300	3270	3250	3220	3190	3160	3120
	Current (Amps)			3.2	3.2	3.2	3.2	3.2	3.2	3.2	3.2	3.1	3.1	3.1	3.1	3.1	3.0
	Flow Rate (lbs/hr)			193	224	260	298	341	387	437	490	548	610	677	747	823	902
	EER (Btu/Watt-hr)			4.2	4.9	5.8	6.8	7.9	9.1	10.4	11.8	13.4	15.1	17.0	19.0	21.2	23.7
110	Capacity (Btu/hr)				18000	21100	24400	28000	31900	36200	40800	45800	51100	56900	63000	69600	
	Power (Watts)				3930	3890	3860	3830	3800	3770	3740	3710	3680	3640	3600	3560	
	Current (Amps)				3.5	3.5	3.5	3.5	3.5	3.4	3.4	3.4	3.4	3.4	3.4	3.3	
	Flow Rate (lbs/hr)				249	288	331	377	428	482	540	602	668	739	814	894	
	EER (Btu/Watt-hr)				4.6	5.4	6.3	7.3	8.4	9.6	10.9	12.3	13.9	15.6	17.5	19.6	
120	Capacity (Btu/hr)					22100	25600	29300	33400	37800	42500	47600	53000	58900	65100		
	Power (Watts)					4420	4380	4350	4310	4280	4240	4200	4160	4120	4070		
	Current (Amps)					3.8	3.8	3.8	3.8	3.8	3.7	3.7	3.7	3.7	3.7		
	Flow Rate (lbs/hr)					319	366	416	471	529	592	658	729	804	884		
	EER (Btu/Watt-hr)					5.0	5.8	6.7	7.7	8.8	10.0	11.3	12.7	14.3	16.0		
130	Capacity (Btu/hr)							26600	30400	34600	39000	43900	49000	54500	60400		
	Power (Watts)							4970	4930	4890	4850	4800	4760	4710	4660		
	Current (Amps)							4.2	4.2	4.2	4.1	4.1	4.1	4.1	4.1		
	Flow Rate (lbs/hr)							402	457	516	579	645	716	792	871		
	EER (Btu/Watt-hr)							5.3	6.2	7.1	8.1	9.1	10.3	11.6	13.0		
140	Capacity (Btu/hr)									22100	25000	28000	31300	34900	38600		
	Power (Watts)									3090	3200	3300	3380	3440	3490		
	Current (Amps)									14.7	15.2	15.7	16.1	16.4	16.6		
	Flow Rate (lbs/hr)									349	392	437	484	534	586		
	EER (Btu/Watt-hr)									7.2	7.8	8.5	9.3	10.1	11.1		
150	Capacity (Btu/hr)											28000	31300	34900	38600		
	Power (Watts)											3300	3380	3440	3490		
	Current (Amps)											15.7	16.1	16.4	16.6		
	Flow Rate (lbs/hr)											437	484	534	586		
	EER (Btu/Watt-hr)											8.5	9.3	10.1	11.1		

* Specifications are subject to change without notice

Data Based on 575 volts

MODEL XNJ492HU

575 VOLTS, THREE PHASE, 60HZ, R-410A

NOMINAL PERFORMANCE AT ASRE/T 575 VOLTS

Capacity (Btu/hr)	49,300
EER (Btu/W-hr).....	10.4
Power (W).....	4,740
Current (A).....	4.2

RATING CONDITIONS AT ASRE/T

Condensing Temp. (Deg. F)	130
Evaporating Temp. (Deg. F)	45
Return Gas Temp. (Deg. F)	95
Liquid Temp. (Deg. F).....	115
Ambient Temp. (Deg. F)	95

MOTOR

Operating Voltage Range.....	517-633
Locked Rotor Amps.....	42.0
Maximum Continuous Current.....	9.1
Rated Load Amps.....	6.7

ELECTRICAL COMPONENTS

Motor Protector Type.....	Internal
Run Capacitor Type.....	N/A

OIL

Oil Type.....	POE / Hatco FRL 32ST
Initial Charge (oz.)	53
Re-Charge (oz.)	44

COMPRESSOR

Maximum Discharge Temp. (Deg. F)	280
Displacement (cu. in / rev).....	2.89
Weight (lbs.,Wet)	82.0
UL/CSA File #	SA11565

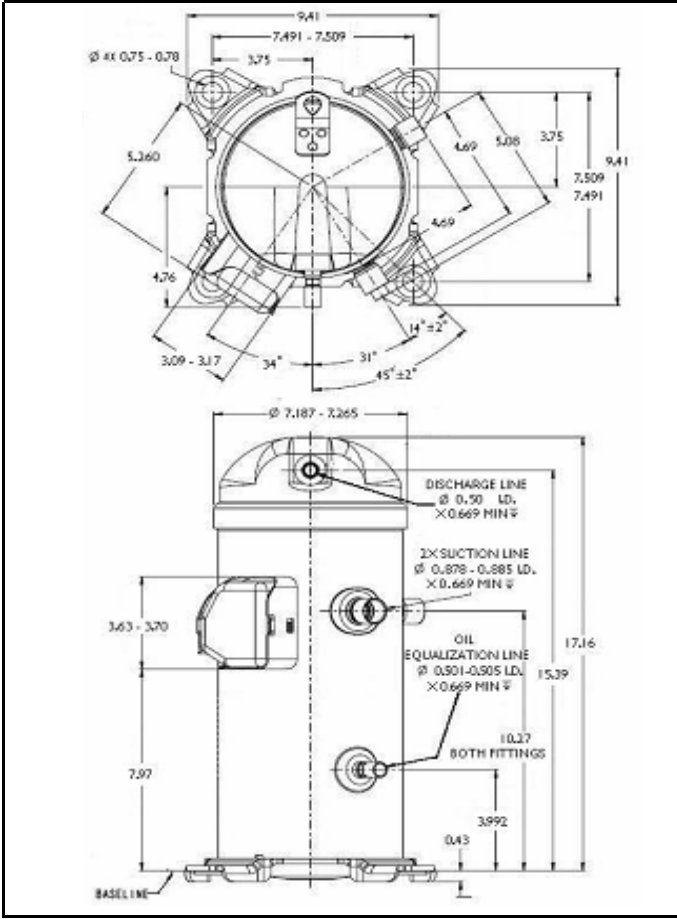
Specifications are subject to change without notice
 Nominal performance value +/- 5%
 Ratings generated with air over compressor

Carlyle Compressor Company

In the U.S.A. and Puerto Rico: 1-800-GO-CARLYLE (1-800-462-2759)
 Canada: 1-800-258-1123
 Mexico: 001-800-462-2759
 Fax: 315-432-3274

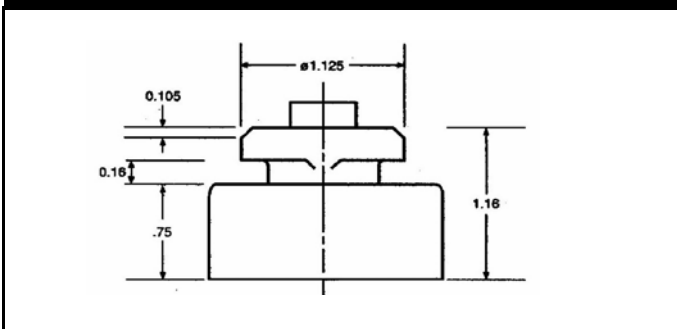
49300 Btu/hr

XN MODEL OUTLINE DIMENSIONS



Dimensions given in Inches

ISOLATOR MOUNTING DIAGRAM



MODEL: XNJ492HU **SUBCOOLING:** 15' F
VOLTAGE: 575-3-60 **SUPERHEAT:** 20' F
REFRIGERANT: R-410A **RATING DATE:** Aug-06



Saturated Condensing		Saturated Evaporating Temperature (Degrees F)															
		-20	-15	-10	-5	0	5	10	15	20	25	30	35	40	45	50	55
80	Capacity (Btu/hr)	13300	15400	17800	20500	23500	26900	30600	34700	39200	44100	49400	55100	61300	67900	75000	82500
	Power (Watts)	2620	2600	2580	2570	2560	2550	2540	2530	2520	2520	2510	2500	2480	2470	2450	2430
	Current (Amps)	2.7	2.7	2.7	2.7	2.7	2.7	2.7	2.7	2.7	2.7	2.7	2.7	2.6	2.6	2.6	2.5
	Flow Rate (lbs/hr)	162	186	213	244	278	316	358	403	452	506	564	626	693	764	840	921
	EER (Btu/Watt-hr)	5.1	5.9	6.9	8.0	9.2	10.6	12.1	13.7	15.5	17.5	19.7	22.1	24.7	27.5	30.6	34.0
90	Capacity (Btu/hr)		13800	16100	18700	21700	25000	28500	32500	36800	41500	46600	52000	57900	64300	71000	78300
	Power (Watts)		3030	3010	2980	2960	2940	2930	2910	2890	2880	2860	2840	2820	2800	2770	2750
	Current (Amps)		2.9	2.9	2.9	2.9	2.9	2.9	2.9	2.9	2.9	2.9	2.9	2.9	2.8	2.8	2.8
	Flow Rate (lbs/hr)		175	203	235	269	307	349	395	444	498	556	618	684	755	831	911
	EER (Btu/Watt-hr)		4.5	5.4	6.3	7.3	8.5	9.8	11.2	12.7	14.4	16.3	18.3	20.5	22.9	25.6	28.5
100	Capacity (Btu/hr)			14500	17000	19900	23000	26500	30300	34400	38900	43700	48900	54600	60600	67100	74000
	Power (Watts)			3480	3450	3420	3390	3370	3340	3320	3300	3270	3250	3220	3190	3160	3120
	Current (Amps)			3.2	3.2	3.2	3.2	3.2	3.2	3.2	3.2	3.1	3.1	3.1	3.1	3.1	3.0
	Flow Rate (lbs/hr)			193	224	260	298	341	387	437	490	548	610	677	747	823	902
	EER (Btu/Watt-hr)			4.2	4.9	5.8	6.8	7.9	9.1	10.4	11.8	13.4	15.1	17.0	19.0	21.2	23.7
110	Capacity (Btu/hr)					18000	21100	24400	28000	31900	36200	40800	45800	51100	56900	63000	69600
	Power (Watts)					3930	3890	3860	3830	3800	3770	3740	3710	3680	3640	3600	3560
	Current (Amps)					3.5	3.5	3.5	3.5	3.5	3.4	3.4	3.4	3.4	3.4	3.4	3.3
	Flow Rate (lbs/hr)					249	288	331	377	428	482	540	602	668	739	814	894
	EER (Btu/Watt-hr)					4.6	5.4	6.3	7.3	8.4	9.6	10.9	12.3	13.9	15.6	17.5	19.6
120	Capacity (Btu/hr)							22100	25600	29300	33400	37800	42500	47600	53000	58900	65100
	Power (Watts)							4420	4380	4350	4310	4280	4240	4200	4160	4120	4070
	Current (Amps)							3.8	3.8	3.8	3.8	3.8	3.7	3.7	3.7	3.7	3.7
	Flow Rate (lbs/hr)							319	366	416	471	529	592	658	729	804	884
	EER (Btu/Watt-hr)							5.0	5.8	6.7	7.7	8.8	10.0	11.3	12.7	14.3	16.0
130	Capacity (Btu/hr)									26600	30400	34600	39000	43900	49000	54500	60400
	Power (Watts)									4970	4930	4890	4850	4800	4760	4710	4660
	Current (Amps)									4.2	4.2	4.2	4.1	4.1	4.1	4.1	4.1
	Flow Rate (lbs/hr)									402	457	516	579	645	716	792	871
	EER (Btu/Watt-hr)									5.3	6.2	7.1	8.1	9.1	10.3	11.6	13.0
140	Capacity (Btu/hr)											22100	25000	28000	31300	34900	38600
	Power (Watts)											3090	3200	3300	3380	3440	3490
	Current (Amps)											14.7	15.2	15.7	16.1	16.4	16.6
	Flow Rate (lbs/hr)											349	392	437	484	534	586
	EER (Btu/Watt-hr)											7.2	7.8	8.5	9.3	10.1	11.1
150	Capacity (Btu/hr)													28000	31300	34900	38600
	Power (Watts)													3300	3380	3440	3490
	Current (Amps)													15.7	16.1	16.4	16.6
	Flow Rate (lbs/hr)													437	484	534	586
	EER (Btu/Watt-hr)													8.5	9.3	10.1	11.1

* Specifications are subject to change without notice

Data Based on 575 volts

MODEL XNJ512HA

575 VOLTS, THREE PHASE, 60HZ, R-410A

NOMINAL PERFORMANCE AT ASRE/T 575 VOLTS

Capacity (Btu/hr)	51,900
EER (Btu/W-hr).....	10.5
Power (W).....	4,950
Current (A).....	4.3

RATING CONDITIONS AT ASRE/T

Condensing Temp. (Deg. F)	130
Evaporating Temp. (Deg. F)	45
Return Gas Temp. (Deg. F)	95
Liquid Temp. (Deg. F).....	115
Ambient Temp. (Deg. F)	95

MOTOR

Operating Voltage Range.....	517-633
Locked Rotor Amps.....	53.0
Maximum Continuous Current.....	11.5
Rated Load Amps.....	7.4

ELECTRICAL COMPONENTS

Motor Protector Type.....	Internal
Run Capacitor Type.....	N/A

OIL

Oil Type.....	POE / Hatco FRL 32ST
Initial Charge (oz.)	53
Re-Charge (oz.)	44

COMPRESSOR

Maximum Discharge Temp. (Deg. F)	280
Displacement (cu. in / rev).....	3.01
Weight (lbs.,Wet)	82.0
UL/CSA File #	SA11565

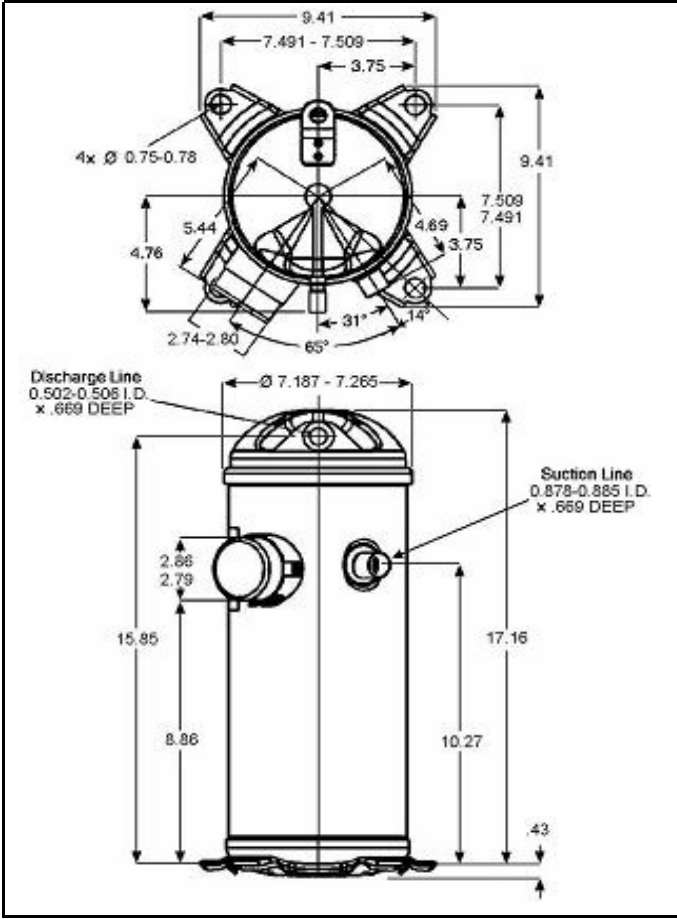
Specifications are subject to change without notice
 Nominal performance value +/- 5%
 Ratings generated with air over compressor

Carlyle Compressor Company

In the U.S.A. and Puerto Rico: 1-800-GO-CARLYLE (1-800-462-2759)
 Canada: 1-800-258-1123
 Mexico: 001-800-462-2759
 Fax: 315-432-3274

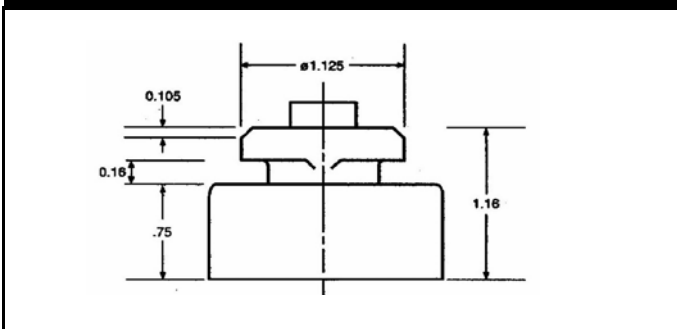
51900 Btu/hr

XN MODEL OUTLINE DIMENSIONS



Dimensions given in Inches

ISOLATOR MOUNTING DIAGRAM



MODEL: XNJ512HA **SUBCOOLING:** 15' F
VOLTAGE: 575-3-60 **SUPERHEAT:** 20' F
REFRIGERANT: R-410A **RATING DATE:** Aug-06



Saturated Condensing		Saturated Evaporating Temperature (Degrees F)															
		-20	-15	-10	-5	0	5	10	15	20	25	30	35	40	45	50	55
80	Capacity (Btu/hr)	14000	16200	18800	21600	24800	28400	32400	36700	41400	46600	52200	58300	64800	71800	79300	87300
	Power (Watts)	2700	2680	2660	2640	2630	2620	2610	2610	2600	2590	2580	2570	2560	2540	2520	2500
	Current (Amps)	2.8	2.8	2.8	2.8	2.8	2.8	2.8	2.8	2.8	2.8	2.8	2.7	2.7	2.7	2.7	2.6
	Flow Rate (lbs/hr)	171	197	225	258	294	334	378	426	478	535	596	662	732	808	888	974
	EER (Btu/Watt-hr)	5.2	6.1	7.1	8.2	9.4	10.8	12.4	14.1	15.9	18.0	20.2	22.7	25.3	28.2	31.4	34.9
90	Capacity (Btu/hr)		14500	17000	19800	22900	26300	30100	34300	38800	43800	49100	54900	61200	67800	75000	82600
	Power (Watts)		3130	3100	3080	3050	3030	3020	3000	2980	2970	2950	2930	2910	2890	2860	2830
	Current (Amps)		3.0	3.0	3.0	3.0	3.0	3.0	3.0	3.0	3.0	3.0	3.0	3.0	2.9	2.9	2.9
	Flow Rate (lbs/hr)		185	215	248	284	324	369	417	469	526	587	652	722	797	877	962
	EER (Btu/Watt-hr)		4.6	5.5	6.4	7.5	8.7	10.0	11.4	13.0	14.8	16.7	18.7	21.0	23.5	26.2	29.2
100	Capacity (Btu/hr)			15300	18000	21000	24300	27900	31900	36300	41000	46100	51600	57500	63900	70700	78000
	Power (Watts)			3590	3560	3530	3500	3480	3450	3430	3400	3380	3350	3320	3290	3260	3220
	Current (Amps)			3.3	3.3	3.3	3.3	3.3	3.3	3.3	3.3	3.3	3.2	3.2	3.2	3.2	3.1
	Flow Rate (lbs/hr)			203	237	274	315	359	408	460	517	578	643	713	788	867	952
	EER (Btu/Watt-hr)			4.2	5.0	5.9	6.9	8.0	9.2	10.6	12.0	13.6	15.4	17.3	19.4	21.7	24.2
110	Capacity (Btu/hr)				19000	22200	25600	29500	33600	38100	43000	48200	53800	59900	66400	73300	
	Power (Watts)				4060	4030	4000	3960	3930	3900	3870	3840	3800	3770	3730	3680	
	Current (Amps)				3.6	3.6	3.6	3.6	3.6	3.6	3.5	3.5	3.5	3.5	3.5	3.4	
	Flow Rate (lbs/hr)				262	303	348	397	450	507	568	634	704	778	857	941	
	EER (Btu/Watt-hr)				4.7	5.5	6.4	7.4	8.5	9.8	11.1	12.6	14.2	15.9	17.8	19.9	
120	Capacity (Btu/hr)						23300	26900	30800	35100	39700	44700	50000	55800	61900	68500	
	Power (Watts)						4590	4550	4510	4470	4440	4400	4360	4320	4270	4220	
	Current (Amps)						3.9	3.9	3.9	3.9	3.9	3.9	3.9	3.8	3.8	3.8	
	Flow Rate (lbs/hr)						335	384	438	495	556	622	692	766	845	929	
	EER (Btu/Watt-hr)						5.1	5.9	6.8	7.8	9.0	10.2	11.5	12.9	14.5	16.2	
130	Capacity (Btu/hr)								27900	31900	36300	41000	46000	51400	57200	63400	
	Power (Watts)								5160	5120	5080	5040	4990	4950	4900	4840	
	Current (Amps)								4.3	4.3	4.3	4.3	4.3	4.2	4.2	4.2	
	Flow Rate (lbs/hr)								422	480	541	607	677	752	831	915	
	EER (Btu/Watt-hr)								5.4	6.2	7.1	8.1	9.2	10.4	11.7	13.1	
140	Capacity (Btu/hr)											22100	25000	28000	31300	34900	38600
	Power (Watts)											3090	3200	3300	3380	3440	3490
	Current (Amps)											14.7	15.2	15.7	16.1	16.4	16.6
	Flow Rate (lbs/hr)											349	392	437	484	534	586
	EER (Btu/Watt-hr)											7.2	7.8	8.5	9.3	10.1	11.1
150	Capacity (Btu/hr)													28000	31300	34900	38600
	Power (Watts)													3300	3380	3440	3490
	Current (Amps)													15.7	16.1	16.4	16.6
	Flow Rate (lbs/hr)													437	484	534	586
	EER (Btu/Watt-hr)													8.5	9.3	10.1	11.1

* Specifications are subject to change without notice

Data Based on 575 volts

MODEL XNJ512HE

575 VOLTS, THREE PHASE, 60HZ, R-410A

NOMINAL PERFORMANCE AT ASRE/T 575 VOLTS

Capacity (Btu/hr)	51,900
EER (Btu/W-hr).....	10.5
Power (W).....	4,950
Current (A).....	4.3

RATING CONDITIONS AT ASRE/T

Condensing Temp. (Deg. F)	130
Evaporating Temp. (Deg. F)	45
Return Gas Temp. (Deg. F)	95
Liquid Temp. (Deg. F).....	115
Ambient Temp. (Deg. F)	95

MOTOR

Operating Voltage Range.....	517-633
Locked Rotor Amps.....	53.0
Maximum Continuous Current.....	11.5
Rated Load Amps.....	7.4

ELECTRICAL COMPONENTS

Motor Protector Type.....	Internal
Run Capacitor Type.....	N/A

OIL

Oil Type.....	POE / Hatco FRL 32ST
Initial Charge (oz.)	53
Re-Charge (oz.)	44

COMPRESSOR

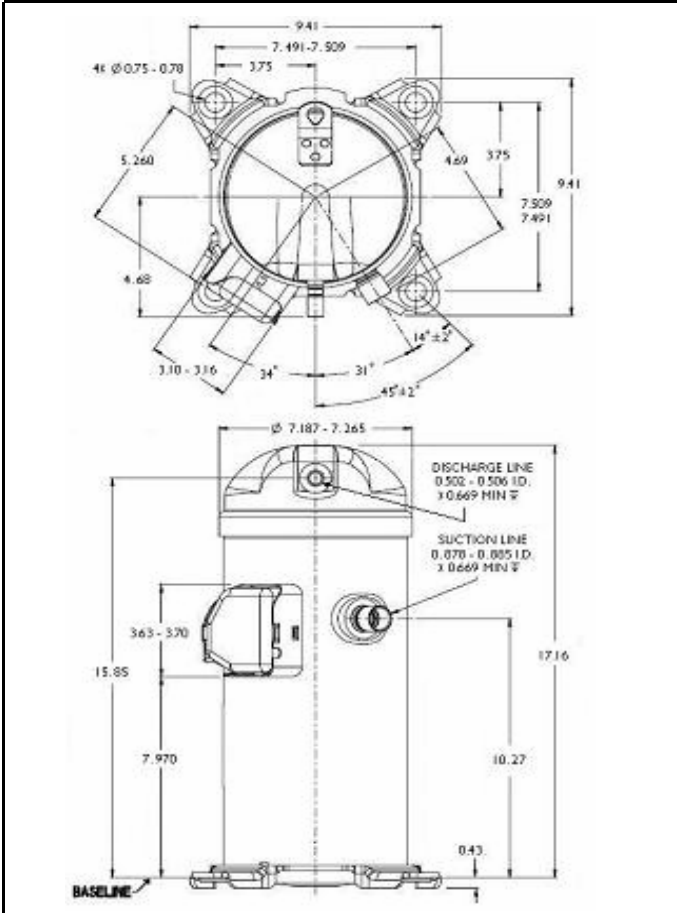
Maximum Discharge Temp. (Deg. F)	280
Displacement (cu. in / rev).....	3.01
Weight (lbs.,Wet)	82.0
UL/CSA File #.....	SA11565

Specifications are subject to change without notice
 Nominal performance value +/- 5%
 Ratings generated with air over compressor

Carlyle Compressor Company

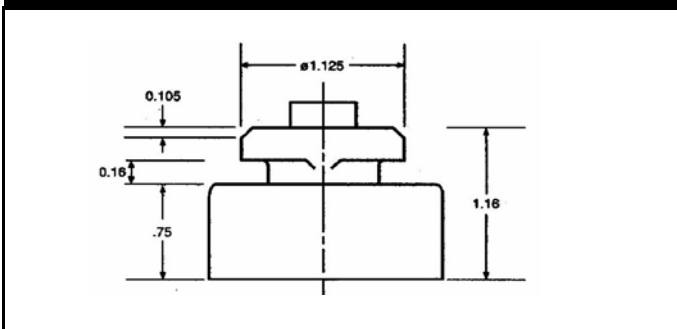
In the U.S.A. and Puerto Rico: 1-800-GO-CARLYLE (1-800-462-2759)
 Canada: 1-800-258-1123
 Mexico: 001-800-462-2759
 Fax: 315-432-3274

XN MODEL OUTLINE DIMENSIONS



Dimensions given in Inches

ISOLATOR MOUNTING DIAGRAM



51900 Btu/hr

MODEL: XNJ512HE **SUBCOOLING:** 15' F
VOLTAGE: 575-3-60 **SUPERHEAT:** 20' F
REFRIGERANT: R-410A **RATING DATE:** Aug-06



Saturated Condensing		Saturated Evaporating Temperature (Degrees F)															
		-20	-15	-10	-5	0	5	10	15	20	25	30	35	40	45	50	55
80	Capacity (Btu/hr)	14000	16200	18800	21600	24800	28400	32400	36700	41400	46600	52200	58300	64800	71800	79300	87300
	Power (Watts)	2700	2680	2660	2640	2630	2620	2610	2610	2600	2590	2580	2570	2560	2540	2520	2500
	Current (Amps)	2.8	2.8	2.8	2.8	2.8	2.8	2.8	2.8	2.8	2.8	2.8	2.7	2.7	2.7	2.7	2.6
	Flow Rate (lbs/hr)	171	197	225	258	294	334	378	426	478	535	596	662	732	808	888	974
	EER (Btu/Watt-hr)	5.2	6.1	7.1	8.2	9.4	10.8	12.4	14.1	15.9	18.0	20.2	22.7	25.3	28.2	31.4	34.9
90	Capacity (Btu/hr)		14500	17000	19800	22900	26300	30100	34300	38800	43800	49100	54900	61200	67800	75000	82600
	Power (Watts)		3130	3100	3080	3050	3030	3020	3000	2980	2970	2950	2930	2910	2890	2860	2830
	Current (Amps)		3.0	3.0	3.0	3.0	3.0	3.0	3.0	3.0	3.0	3.0	3.0	3.0	2.9	2.9	2.9
	Flow Rate (lbs/hr)		185	215	248	284	324	369	417	469	526	587	652	722	797	877	962
	EER (Btu/Watt-hr)		4.6	5.5	6.4	7.5	8.7	10.0	11.4	13.0	14.8	16.7	18.7	21.0	23.5	26.2	29.2
100	Capacity (Btu/hr)			15300	18000	21000	24300	27900	31900	36300	41000	46100	51600	57500	63900	70700	78000
	Power (Watts)			3590	3560	3530	3500	3480	3450	3430	3400	3380	3350	3320	3290	3260	3220
	Current (Amps)			3.3	3.3	3.3	3.3	3.3	3.3	3.3	3.3	3.3	3.2	3.2	3.2	3.2	3.1
	Flow Rate (lbs/hr)			203	237	274	315	359	408	460	517	578	643	713	788	867	952
	EER (Btu/Watt-hr)			4.2	5.0	5.9	6.9	8.0	9.2	10.6	12.0	13.6	15.4	17.3	19.4	21.7	24.2
110	Capacity (Btu/hr)				19000	22200	25600	29500	33600	38100	43000	48200	53800	59900	66400	73300	
	Power (Watts)				4060	4030	4000	3960	3930	3900	3870	3840	3800	3770	3730	3680	
	Current (Amps)				3.6	3.6	3.6	3.6	3.6	3.6	3.5	3.5	3.5	3.5	3.5	3.4	
	Flow Rate (lbs/hr)				262	303	348	397	450	507	568	634	704	778	857	941	
	EER (Btu/Watt-hr)				4.7	5.5	6.4	7.4	8.5	9.8	11.1	12.6	14.2	15.9	17.8	19.9	
120	Capacity (Btu/hr)					23300	26900	30800	35100	39700	44700	50000	55800	61900	68500		
	Power (Watts)					4590	4550	4510	4470	4440	4400	4360	4320	4270	4220		
	Current (Amps)					3.9	3.9	3.9	3.9	3.9	3.9	3.9	3.8	3.8	3.8		
	Flow Rate (lbs/hr)					335	384	438	495	556	622	692	766	845	929		
	EER (Btu/Watt-hr)					5.1	5.9	6.8	7.8	9.0	10.2	11.5	12.9	14.5	16.2		
130	Capacity (Btu/hr)						27900	31900	36300	41000	46000	51400	57200	63400			
	Power (Watts)						5160	5120	5080	5040	4990	4950	4900	4840			
	Current (Amps)						4.3	4.3	4.3	4.3	4.3	4.2	4.2	4.2			
	Flow Rate (lbs/hr)						422	480	541	607	677	752	831	915			
	EER (Btu/Watt-hr)						5.4	6.2	7.1	8.1	9.2	10.4	11.7	13.1			
140	Capacity (Btu/hr)								22100	25000	28000	31300	34900	38600			
	Power (Watts)								3090	3200	3300	3380	3440	3490			
	Current (Amps)								14.7	15.2	15.7	16.1	16.4	16.6			
	Flow Rate (lbs/hr)								349	392	437	484	534	586			
	EER (Btu/Watt-hr)								7.2	7.8	8.5	9.3	10.1	11.1			
150	Capacity (Btu/hr)											28000	31300	34900	38600		
	Power (Watts)											3300	3380	3440	3490		
	Current (Amps)											15.7	16.1	16.4	16.6		
	Flow Rate (lbs/hr)											437	484	534	586		
	EER (Btu/Watt-hr)											8.5	9.3	10.1	11.1		

* Specifications are subject to change without notice

Data Based on 575 volts

MODEL XNJ512HU

575 VOLTS, THREE PHASE, 60HZ, R-410A

NOMINAL PERFORMANCE AT ASRE/T 575 VOLTS

Capacity (Btu/hr)	51,900
EER (Btu/W-hr).....	10.5
Power (W).....	4,950
Current (A).....	4.3

RATING CONDITIONS AT ASRE/T

Condensing Temp. (Deg. F)	130
Evaporating Temp. (Deg. F)	45
Return Gas Temp. (Deg. F)	95
Liquid Temp. (Deg. F).....	115
Ambient Temp. (Deg. F)	95

MOTOR

Operating Voltage Range.....	517-633
Locked Rotor Amps.....	53.0
Maximum Continuous Current.....	11.5
Rated Load Amps.....	7.4

ELECTRICAL COMPONENTS

Motor Protector Type.....	Internal
Run Capacitor Type.....	N/A

OIL

Oil Type.....	POE / Hatco FRL 32ST
Initial Charge (oz.)	53
Re-Charge (oz.)	44

COMPRESSOR

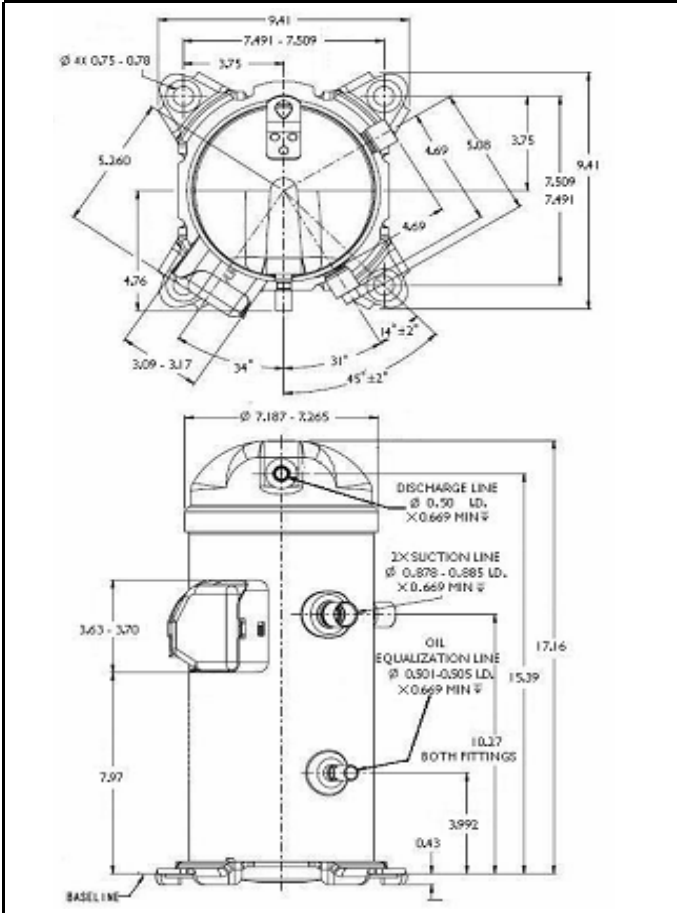
Maximum Discharge Temp. (Deg. F)	280
Displacement (cu. in / rev).....	3.01
Weight (lbs.,Wet)	82.0
UL/CSA File #	SA11565

Specifications are subject to change without notice
 Nominal performance value +/- 5%
 Ratings generated with air over compressor

Carlyle Compressor Company

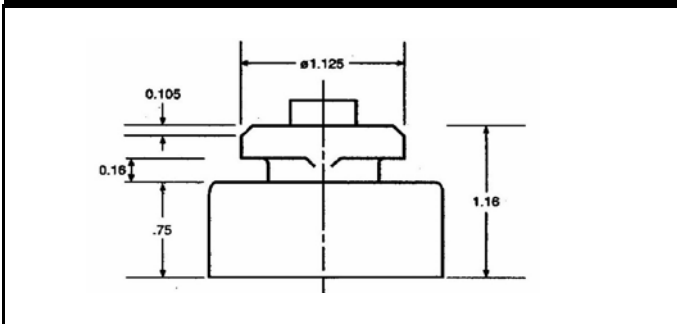
In the U.S.A. and Puerto Rico: 1-800-GO-CARLYLE (1-800-462-2759)
 Canada: 1-800-258-1123
 Mexico: 001-800-462-2759
 Fax: 315-432-3274

XN MODEL OUTLINE DIMENSIONS



Dimensions given in Inches

ISOLATOR MOUNTING DIAGRAM



51900 Btu/hr

MODEL: XNJ512HU **SUBCOOLING:** 15' F
VOLTAGE: 575-3-60 **SUPERHEAT:** 20' F
REFRIGERANT: R-410A **RATING DATE:** Aug-06



Saturated Condensing		Saturated Evaporating Temperature (Degrees F)															
		-20	-15	-10	-5	0	5	10	15	20	25	30	35	40	45	50	55
80	Capacity (Btu/hr)	14000	16200	18800	21600	24800	28400	32400	36700	41400	46600	52200	58300	64800	71800	79300	87300
	Power (Watts)	2700	2680	2660	2640	2630	2620	2610	2610	2600	2590	2580	2570	2560	2540	2520	2500
	Current (Amps)	2.8	2.8	2.8	2.8	2.8	2.8	2.8	2.8	2.8	2.8	2.8	2.7	2.7	2.7	2.7	2.6
	Flow Rate (lbs/hr)	171	197	225	258	294	334	378	426	478	535	596	662	732	808	888	974
	EER (Btu/Watt-hr)	5.2	6.1	7.1	8.2	9.4	10.8	12.4	14.1	15.9	18.0	20.2	22.7	25.3	28.2	31.4	34.9
90	Capacity (Btu/hr)		14500	17000	19800	22900	26300	30100	34300	38800	43800	49100	54900	61200	67800	75000	82600
	Power (Watts)		3130	3100	3080	3050	3030	3020	3000	2980	2970	2950	2930	2910	2890	2860	2830
	Current (Amps)		3.0	3.0	3.0	3.0	3.0	3.0	3.0	3.0	3.0	3.0	3.0	3.0	2.9	2.9	2.9
	Flow Rate (lbs/hr)		185	215	248	284	324	369	417	469	526	587	652	722	797	877	962
	EER (Btu/Watt-hr)		4.6	5.5	6.4	7.5	8.7	10.0	11.4	13.0	14.8	16.7	18.7	21.0	23.5	26.2	29.2
100	Capacity (Btu/hr)			15300	18000	21000	24300	27900	31900	36300	41000	46100	51600	57500	63900	70700	78000
	Power (Watts)			3590	3560	3530	3500	3480	3450	3430	3400	3380	3350	3320	3290	3260	3220
	Current (Amps)			3.3	3.3	3.3	3.3	3.3	3.3	3.3	3.3	3.3	3.2	3.2	3.2	3.2	3.1
	Flow Rate (lbs/hr)			203	237	274	315	359	408	460	517	578	643	713	788	867	952
	EER (Btu/Watt-hr)			4.2	5.0	5.9	6.9	8.0	9.2	10.6	12.0	13.6	15.4	17.3	19.4	21.7	24.2
110	Capacity (Btu/hr)				19000	22200	25600	29500	33600	38100	43000	48200	53800	59900	66400	73300	
	Power (Watts)				4060	4030	4000	3960	3930	3900	3870	3840	3800	3770	3730	3680	
	Current (Amps)				3.6	3.6	3.6	3.6	3.6	3.6	3.6	3.5	3.5	3.5	3.5	3.4	
	Flow Rate (lbs/hr)				262	303	348	397	450	507	568	634	704	778	857	941	
	EER (Btu/Watt-hr)				4.7	5.5	6.4	7.4	8.5	9.8	11.1	12.6	14.2	15.9	17.8	19.9	
120	Capacity (Btu/hr)					23300	26900	30800	35100	39700	44700	50000	55800	61900	68500		
	Power (Watts)					4590	4550	4510	4470	4440	4400	4360	4320	4270	4220		
	Current (Amps)					3.9	3.9	3.9	3.9	3.9	3.9	3.9	3.8	3.8	3.8		
	Flow Rate (lbs/hr)					335	384	438	495	556	622	692	766	845	929		
	EER (Btu/Watt-hr)					5.1	5.9	6.8	7.8	9.0	10.2	11.5	12.9	14.5	16.2		
130	Capacity (Btu/hr)						27900	31900	36300	41000	46000	51400	57200	63400			
	Power (Watts)						5160	5120	5080	5040	4990	4950	4900	4840			
	Current (Amps)						4.3	4.3	4.3	4.3	4.3	4.2	4.2	4.2			
	Flow Rate (lbs/hr)						422	480	541	607	677	752	831	915			
	EER (Btu/Watt-hr)						5.4	6.2	7.1	8.1	9.2	10.4	11.7	13.1			
140	Capacity (Btu/hr)								22100	25000	28000	31300	34900	38600			
	Power (Watts)								3090	3200	3300	3380	3440	3490			
	Current (Amps)								14.7	15.2	15.7	16.1	16.4	16.6			
	Flow Rate (lbs/hr)								349	392	437	484	534	586			
	EER (Btu/Watt-hr)								7.2	7.8	8.5	9.3	10.1	11.1			
150	Capacity (Btu/hr)											28000	31300	34900	38600		
	Power (Watts)											3300	3380	3440	3490		
	Current (Amps)											15.7	16.1	16.4	16.6		
	Flow Rate (lbs/hr)											437	484	534	586		
	EER (Btu/Watt-hr)											8.5	9.3	10.1	11.1		

* Specifications are subject to change without notice

Data Based on 575 volts

MODEL XNJ542HA

575 VOLTS, THREE PHASE, 60HZ, R-410A

NOMINAL PERFORMANCE AT ASRE/T 575 VOLTS

Capacity (Btu/hr)	55,000
EER (Btu/W-hr).....	10.4
Power (W).....	5,300
Current (A).....	4.5

RATING CONDITIONS AT ASRE/T

Condensing Temp. (Deg. F)	130
Evaporating Temp. (Deg. F)	45
Return Gas Temp. (Deg. F)	95
Liquid Temp. (Deg. F).....	115
Ambient Temp. (Deg. F)	95

MOTOR

Operating Voltage Range.....	517-633
Locked Rotor Amps.....	53.0
Maximum Continuous Current.....	11.7
Rated Load Amps.....	7.5

ELECTRICAL COMPONENTS

Motor Protector Type.....	Internal
Run Capacitor Type.....	N/A

OIL

Oil Type.....	POE / Hatco FRL 32ST
Initial Charge (oz.)	53
Re-Charge (oz.)	44

COMPRESSOR

Maximum Discharge Temp. (Deg. F)	280
Displacement (cu. in / rev).....	3.18
Weight (lbs.,Wet)	82.0
UL/CSA File #	SA11565

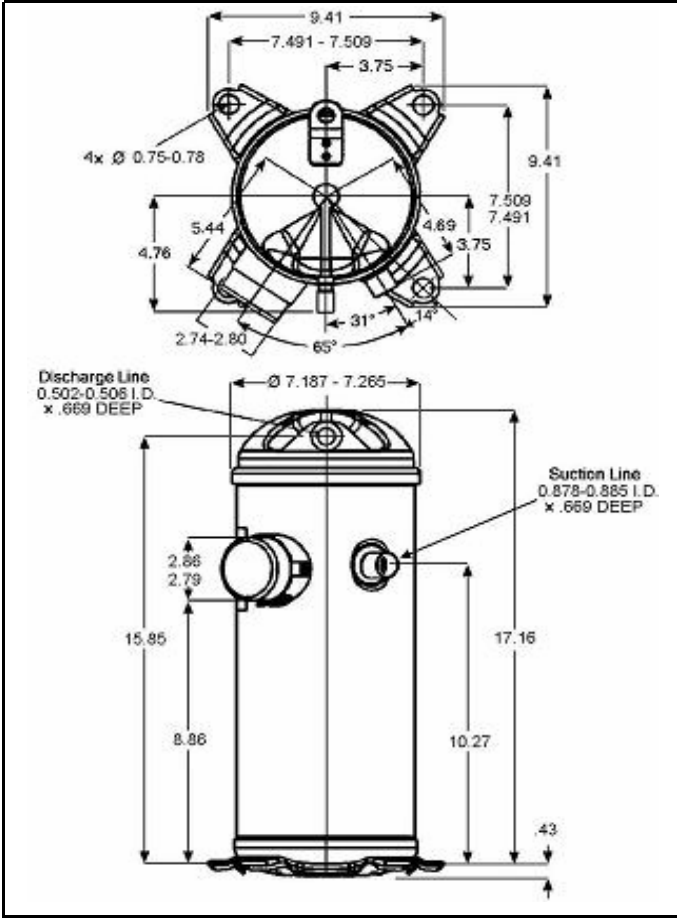
Specifications are subject to change without notice
 Nominal performance value +/- 5%
 Ratings generated with air over compressor

Carlyle Compressor Company

In the U.S.A. and Puerto Rico: 1-800-GO-CARLYLE (1-800-462-2759)
 Canada: 1-800-258-1123
 Mexico: 001-800-462-2759
 Fax: 315-432-3274

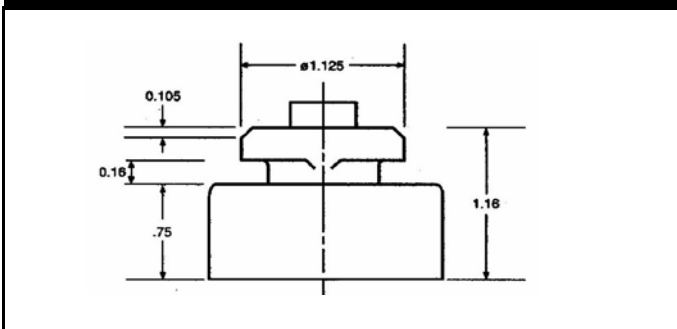
55000 Btu/hr

XN MODEL OUTLINE DIMENSIONS



Dimensions given in Inches

ISOLATOR MOUNTING DIAGRAM



MODEL: XNJ542HA **SUBCOOLING:** 15' F
VOLTAGE: 575-3-60 **SUPERHEAT:** 20' F
REFRIGERANT: R-410A **RATING DATE:** Aug-06



Saturated Condensing		Saturated Evaporating Temperature (Degrees F)															
		-20	-15	-10	-5	0	5	10	15	20	25	30	35	40	45	50	55
80	Capacity (Btu/hr)	14800	17200	19800	22900	26300	30000	34200	38800	43800	49300	55200	61600	68500	75800	83800	92200
	Power (Watts)	2840	2820	2800	2780	2770	2760	2750	2740	2740	2730	2720	2710	2690	2680	2660	2630
	Current (Amps)	2.9	2.9	2.9	2.9	2.9	2.9	2.9	2.9	2.9	2.9	2.9	2.8	2.8	2.8	2.7	2.7
	Flow Rate (lbs/hr)	181	208	238	272	311	353	399	450	505	565	630	699	774	854	938	1029
	EER (Btu/Watt-hr)	5.2	6.1	7.1	8.2	9.5	10.9	12.4	14.1	16.0	18.1	20.3	22.7	25.4	28.3	31.5	35.1
90	Capacity (Btu/hr)		15400	18000	20900	24200	27900	31900	36300	41100	46300	52000	58100	64700	71700	79300	87400
	Power (Watts)		3300	3270	3240	3220	3200	3180	3170	3150	3130	3110	3090	3070	3050	3020	2980
	Current (Amps)		3.1	3.1	3.1	3.1	3.1	3.1	3.1	3.1	3.1	3.1	3.1	3.1	3.0	3.0	3.0
	Flow Rate (lbs/hr)		196	227	262	300	343	390	441	496	556	621	690	764	843	928	1017
	EER (Btu/Watt-hr)		4.7	5.5	6.4	7.5	8.7	10.0	11.5	13.0	14.8	16.7	18.8	21.1	23.6	26.3	29.3
100	Capacity (Btu/hr)			16200	19000	22200	25700	29500	33800	38400	43300	48800	54600	60900	67600	74800	82500
	Power (Watts)			3800	3770	3730	3710	3680	3650	3630	3600	3570	3550	3520	3480	3450	3410
	Current (Amps)			3.4	3.4	3.4	3.4	3.4	3.4	3.4	3.4	3.4	3.3	3.3	3.3	3.3	3.2
	Flow Rate (lbs/hr)			215	250	290	333	380	431	487	547	611	681	755	834	918	1007
	EER (Btu/Watt-hr)			4.2	5.0	5.9	6.9	8.0	9.2	10.6	12.0	13.6	15.4	17.3	19.4	21.7	24.2
110	Capacity (Btu/hr)				20100	23500	27100	31200	35600	40300	45500	51000	57000	63400	70300	77600	
	Power (Watts)				4320	4280	4240	4210	4180	4140	4110	4080	4040	4000	3960	3910	
	Current (Amps)				3.7	3.7	3.7	3.7	3.7	3.7	3.7	3.7	3.6	3.6	3.6	3.6	3.6
	Flow Rate (lbs/hr)				277	321	369	421	477	537	602	671	745	824	907	996	
	EER (Btu/Watt-hr)				4.7	5.5	6.4	7.4	8.5	9.7	11.1	12.5	14.1	15.8	17.8	19.8	
120	Capacity (Btu/hr)						24600	28500	32700	37200	42100	47300	53000	59100	65600	72500	
	Power (Watts)						4890	4850	4810	4770	4730	4690	4650	4600	4550	4500	
	Current (Amps)						4.1	4.0	4.0	4.0	4.0	4.0	4.0	4.0	3.9	3.9	
	Flow Rate (lbs/hr)						355	407	464	524	589	659	733	812	895	984	
	EER (Btu/Watt-hr)						5.0	5.9	6.8	7.8	8.9	10.1	11.4	12.8	14.4	16.1	
130	Capacity (Btu/hr)								29600	33800	38500	43400	48800	54500	60700	67200	
	Power (Watts)								5530	5480	5440	5390	5340	5290	5240	5180	
	Current (Amps)								4.5	4.4	4.4	4.4	4.4	4.4	4.3	4.3	
	Flow Rate (lbs/hr)								447	508	574	644	718	797	881	969	
	EER (Btu/Watt-hr)								5.3	6.2	7.1	8.1	9.1	10.3	11.6	13.0	
140	Capacity (Btu/hr)										22100	25000	28000	31300	34900	38600	
	Power (Watts)										3090	3200	3300	3380	3440	3490	
	Current (Amps)										14.7	15.2	15.7	16.1	16.4	16.6	
	Flow Rate (lbs/hr)										349	392	437	484	534	586	
	EER (Btu/Watt-hr)										7.2	7.8	8.5	9.3	10.1	11.1	
150	Capacity (Btu/hr)												28000	31300	34900	38600	
	Power (Watts)												3300	3380	3440	3490	
	Current (Amps)												15.7	16.1	16.4	16.6	
	Flow Rate (lbs/hr)												437	484	534	586	
	EER (Btu/Watt-hr)												8.5	9.3	10.1	11.1	

* Specifications are subject to change without notice

Data Based on 575 volts

MODEL XNJ542HE

575 VOLTS, THREE PHASE, 60HZ, R-410A

NOMINAL PERFORMANCE AT ASRE/T 575 VOLTS

Capacity (Btu/hr)	55,000
EER (Btu/W-hr).....	10.4
Power (W).....	5,300
Current (A).....	4.5

RATING CONDITIONS AT ASRE/T

Condensing Temp. (Deg. F)	130
Evaporating Temp. (Deg. F)	45
Return Gas Temp. (Deg. F)	95
Liquid Temp. (Deg. F).....	115
Ambient Temp. (Deg. F)	95

MOTOR

Operating Voltage Range.....	517-633
Locked Rotor Amps.....	53.0
Maximum Continuous Current.....	11.7
Rated Load Amps.....	7.5

ELECTRICAL COMPONENTS

Motor Protector Type.....	Internal
Run Capacitor Type.....	N/A

OIL

Oil Type.....	POE / Hatco FRL 32ST
Initial Charge (oz.)	53
Re-Charge (oz.)	44

COMPRESSOR

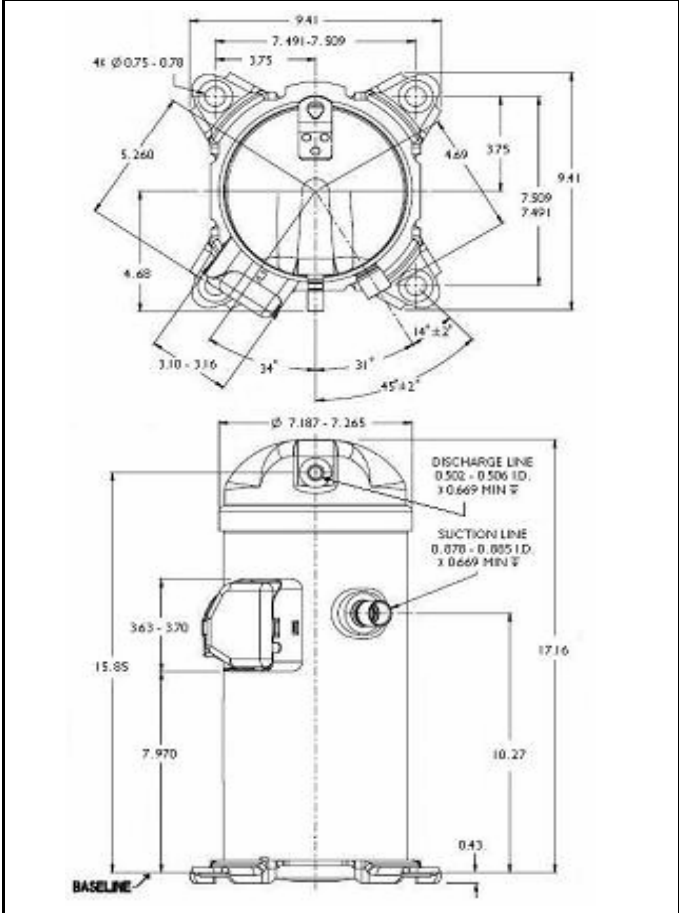
Maximum Discharge Temp. (Deg. F)	280
Displacement (cu. in / rev).....	3.18
Weight (lbs.,Wet)	82.0
UL/CSA File #.....	SA11565

Specifications are subject to change without notice
 Nominal performance value +/- 5%
 Ratings generated with air over compressor

Carlyle Compressor Company

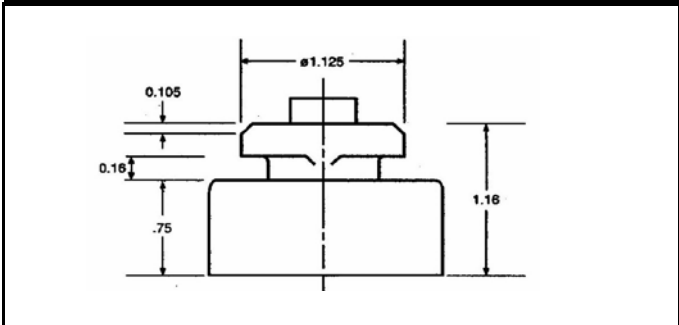
In the U.S.A. and Puerto Rico: 1-800-GO-CARLYLE (1-800-462-2759)
 Canada: 1-800-258-1123
 Mexico: 001-800-462-2759
 Fax: 315-432-3274

XN MODEL OUTLINE DIMENSIONS



Dimensions given in Inches

ISOLATOR MOUNTING DIAGRAM



55000 Btu/hr

MODEL: XNJ542HE **SUBCOOLING:** 15' F
VOLTAGE: 575-3-60 **SUPERHEAT:** 20' F
REFRIGERANT: R-410A **RATING DATE:** Aug-06



Saturated Condensing		Saturated Evaporating Temperature (Degrees F)															
		-20	-15	-10	-5	0	5	10	15	20	25	30	35	40	45	50	55
80	Capacity (Btu/hr)	14800	17200	19800	22900	26300	30000	34200	38800	43800	49300	55200	61600	68500	75800	83800	92200
	Power (Watts)	2840	2820	2800	2780	2770	2760	2750	2740	2740	2730	2720	2710	2690	2680	2660	2630
	Current (Amps)	2.9	2.9	2.9	2.9	2.9	2.9	2.9	2.9	2.9	2.9	2.9	2.8	2.8	2.8	2.7	2.7
	Flow Rate (lbs/hr)	181	208	238	272	311	353	399	450	505	565	630	699	774	854	938	1029
	EER (Btu/Watt-hr)	5.2	6.1	7.1	8.2	9.5	10.9	12.4	14.1	16.0	18.1	20.3	22.7	25.4	28.3	31.5	35.1
90	Capacity (Btu/hr)		15400	18000	20900	24200	27900	31900	36300	41100	46300	52000	58100	64700	71700	79300	87400
	Power (Watts)		3300	3270	3240	3220	3200	3180	3170	3150	3130	3110	3090	3070	3050	3020	2980
	Current (Amps)		3.1	3.1	3.1	3.1	3.1	3.1	3.1	3.1	3.1	3.1	3.1	3.1	3.0	3.0	3.0
	Flow Rate (lbs/hr)		196	227	262	300	343	390	441	496	556	621	690	764	843	928	1017
	EER (Btu/Watt-hr)		4.7	5.5	6.4	7.5	8.7	10.0	11.5	13.0	14.8	16.7	18.8	21.1	23.6	26.3	29.3
100	Capacity (Btu/hr)			16200	19000	22200	25700	29500	33800	38400	43300	48800	54600	60900	67600	74800	82500
	Power (Watts)			3800	3770	3730	3710	3680	3650	3630	3600	3570	3550	3520	3480	3450	3410
	Current (Amps)			3.4	3.4	3.4	3.4	3.4	3.4	3.4	3.4	3.4	3.3	3.3	3.3	3.3	3.2
	Flow Rate (lbs/hr)			215	250	290	333	380	431	487	547	611	681	755	834	918	1007
	EER (Btu/Watt-hr)			4.2	5.0	5.9	6.9	8.0	9.2	10.6	12.0	13.6	15.4	17.3	19.4	21.7	24.2
110	Capacity (Btu/hr)				20100	23500	27100	31200	35600	40300	45500	51000	57000	63400	70300	77600	
	Power (Watts)				4320	4280	4240	4210	4180	4140	4110	4080	4040	4000	3960	3910	
	Current (Amps)				3.7	3.7	3.7	3.7	3.7	3.7	3.7	3.7	3.6	3.6	3.6	3.6	
	Flow Rate (lbs/hr)				277	321	369	421	477	537	602	671	745	824	907	996	
	EER (Btu/Watt-hr)				4.7	5.5	6.4	7.4	8.5	9.7	11.1	12.5	14.1	15.8	17.8	19.8	
120	Capacity (Btu/hr)						24600	28500	32700	37200	42100	47300	53000	59100	65600	72500	
	Power (Watts)						4890	4850	4810	4770	4730	4690	4650	4600	4550	4500	
	Current (Amps)						4.1	4.0	4.0	4.0	4.0	4.0	4.0	4.0	3.9	3.9	
	Flow Rate (lbs/hr)						355	407	464	524	589	659	733	812	895	984	
	EER (Btu/Watt-hr)						5.0	5.9	6.8	7.8	8.9	10.1	11.4	12.8	14.4	16.1	
130	Capacity (Btu/hr)								29600	33800	38500	43400	48800	54500	60700	67200	
	Power (Watts)								5530	5480	5440	5390	5340	5290	5240	5180	
	Current (Amps)								4.5	4.4	4.4	4.4	4.4	4.4	4.3	4.3	
	Flow Rate (lbs/hr)								447	508	574	644	718	797	881	969	
	EER (Btu/Watt-hr)								5.3	6.2	7.1	8.1	9.1	10.3	11.6	13.0	
140	Capacity (Btu/hr)										22100	25000	28000	31300	34900	38600	
	Power (Watts)										3090	3200	3300	3380	3440	3490	
	Current (Amps)										14.7	15.2	15.7	16.1	16.4	16.6	
	Flow Rate (lbs/hr)										349	392	437	484	534	586	
	EER (Btu/Watt-hr)										7.2	7.8	8.5	9.3	10.1	11.1	
150	Capacity (Btu/hr)												28000	31300	34900	38600	
	Power (Watts)												3300	3380	3440	3490	
	Current (Amps)												15.7	16.1	16.4	16.6	
	Flow Rate (lbs/hr)												437	484	534	586	
	EER (Btu/Watt-hr)												8.5	9.3	10.1	11.1	

* Specifications are subject to change without notice

Data Based on 575 volts

MODEL XNJ542HU

575 VOLTS, THREE PHASE, 60HZ, R-410A

NOMINAL PERFORMANCE AT ASRE/T 575 VOLTS

Capacity (Btu/hr)	55,000
EER (Btu/W-hr).....	10.4
Power (W).....	5,300
Current (A).....	4.5

RATING CONDITIONS AT ASRE/T

Condensing Temp. (Deg. F)	130
Evaporating Temp. (Deg. F)	45
Return Gas Temp. (Deg. F)	95
Liquid Temp. (Deg. F).....	115
Ambient Temp. (Deg. F)	95

MOTOR

Operating Voltage Range.....	517-633
Locked Rotor Amps.....	53.0
Maximum Continuous Current.....	11.7
Rated Load Amps.....	7.5

ELECTRICAL COMPONENTS

Motor Protector Type.....	Internal
Run Capacitor Type.....	N/A

OIL

Oil Type.....	POE / Hatco FRL 32ST
Initial Charge (oz.)	53
Re-Charge (oz.)	44

COMPRESSOR

Maximum Discharge Temp. (Deg. F)	280
Displacement (cu. in / rev).....	3.18
Weight (lbs.,Wet)	82.0
UL/CSA File #	SA11565

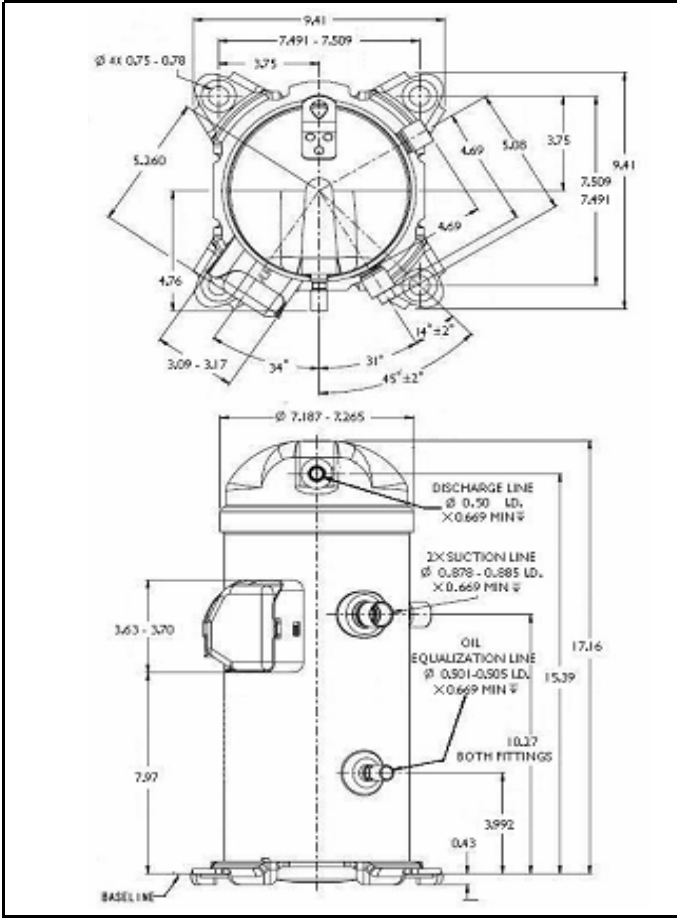
Specifications are subject to change without notice
 Nominal performance value +/- 5%
 Ratings generated with air over compressor

Carlyle Compressor Company

In the U.S.A. and Puerto Rico: 1-800-GO-CARLYLE (1-800-462-2759)
 Canada: 1-800-258-1123
 Mexico: 001-800-462-2759
 Fax: 315-432-3274

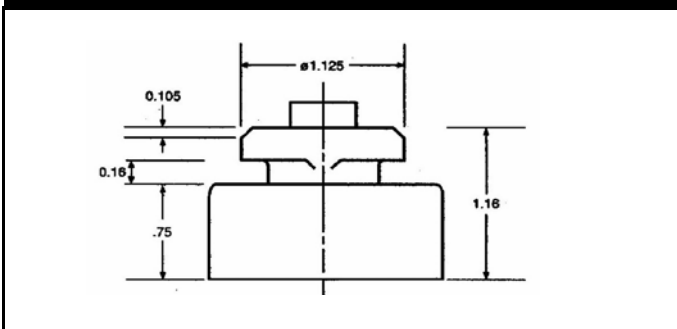
55000 Btu/hr

XN MODEL OUTLINE DIMENSIONS



Dimensions given in Inches

ISOLATOR MOUNTING DIAGRAM



MODEL: XNJ542HU **SUBCOOLING:** 15' F
VOLTAGE: 575-3-60 **SUPERHEAT:** 20' F
REFRIGERANT: R-410A **RATING DATE:** Aug-06



Saturated Condensing		Saturated Evaporating Temperature (Degrees F)															
		-20	-15	-10	-5	0	5	10	15	20	25	30	35	40	45	50	55
80	Capacity (Btu/hr)	14800	17200	19800	22900	26300	30000	34200	38800	43800	49300	55200	61600	68500	75800	83800	92200
	Power (Watts)	2840	2820	2800	2780	2770	2760	2750	2740	2740	2730	2720	2710	2690	2680	2660	2630
	Current (Amps)	2.9	2.9	2.9	2.9	2.9	2.9	2.9	2.9	2.9	2.9	2.9	2.8	2.8	2.8	2.7	2.7
	Flow Rate (lbs/hr)	181	208	238	272	311	353	399	450	505	565	630	699	774	854	938	1029
	EER (Btu/Watt-hr)	5.2	6.1	7.1	8.2	9.5	10.9	12.4	14.1	16.0	18.1	20.3	22.7	25.4	28.3	31.5	35.1
90	Capacity (Btu/hr)		15400	18000	20900	24200	27900	31900	36300	41100	46300	52000	58100	64700	71700	79300	87400
	Power (Watts)		3300	3270	3240	3220	3200	3180	3170	3150	3130	3110	3090	3070	3050	3020	2980
	Current (Amps)		3.1	3.1	3.1	3.1	3.1	3.1	3.1	3.1	3.1	3.1	3.1	3.1	3.0	3.0	3.0
	Flow Rate (lbs/hr)		196	227	262	300	343	390	441	496	556	621	690	764	843	928	1017
	EER (Btu/Watt-hr)		4.7	5.5	6.4	7.5	8.7	10.0	11.5	13.0	14.8	16.7	18.8	21.1	23.6	26.3	29.3
100	Capacity (Btu/hr)			16200	19000	22200	25700	29500	33800	38400	43300	48800	54600	60900	67600	74800	82500
	Power (Watts)			3800	3770	3730	3710	3680	3650	3630	3600	3570	3550	3520	3480	3450	3410
	Current (Amps)			3.4	3.4	3.4	3.4	3.4	3.4	3.4	3.4	3.4	3.3	3.3	3.3	3.3	3.2
	Flow Rate (lbs/hr)			215	250	290	333	380	431	487	547	611	681	755	834	918	1007
	EER (Btu/Watt-hr)			4.2	5.0	5.9	6.9	8.0	9.2	10.6	12.0	13.6	15.4	17.3	19.4	21.7	24.2
110	Capacity (Btu/hr)				20100	23500	27100	31200	35600	40300	45500	51000	57000	63400	70300	77600	
	Power (Watts)				4320	4280	4240	4210	4180	4140	4110	4080	4040	4000	3960	3910	
	Current (Amps)				3.7	3.7	3.7	3.7	3.7	3.7	3.7	3.7	3.6	3.6	3.6	3.6	3.6
	Flow Rate (lbs/hr)				277	321	369	421	477	537	602	671	745	824	907	996	
	EER (Btu/Watt-hr)				4.7	5.5	6.4	7.4	8.5	9.7	11.1	12.5	14.1	15.8	17.8	19.8	
120	Capacity (Btu/hr)						24600	28500	32700	37200	42100	47300	53000	59100	65600	72500	
	Power (Watts)						4890	4850	4810	4770	4730	4690	4650	4600	4550	4500	
	Current (Amps)						4.1	4.0	4.0	4.0	4.0	4.0	4.0	4.0	3.9	3.9	
	Flow Rate (lbs/hr)						355	407	464	524	589	659	733	812	895	984	
	EER (Btu/Watt-hr)						5.0	5.9	6.8	7.8	8.9	10.1	11.4	12.8	14.4	16.1	
130	Capacity (Btu/hr)								29600	33800	38500	43400	48800	54500	60700	67200	
	Power (Watts)								5530	5480	5440	5390	5340	5290	5240	5180	
	Current (Amps)								4.5	4.4	4.4	4.4	4.4	4.4	4.3	4.3	
	Flow Rate (lbs/hr)								447	508	574	644	718	797	881	969	
	EER (Btu/Watt-hr)								5.3	6.2	7.1	8.1	9.1	10.3	11.6	13.0	
140	Capacity (Btu/hr)										22100	25000	28000	31300	34900	38600	
	Power (Watts)										3090	3200	3300	3380	3440	3490	
	Current (Amps)										14.7	15.2	15.7	16.1	16.4	16.6	
	Flow Rate (lbs/hr)										349	392	437	484	534	586	
	EER (Btu/Watt-hr)										7.2	7.8	8.5	9.3	10.1	11.1	
150	Capacity (Btu/hr)												28000	31300	34900	38600	
	Power (Watts)												3300	3380	3440	3490	
	Current (Amps)												15.7	16.1	16.4	16.6	
	Flow Rate (lbs/hr)												437	484	534	586	
	EER (Btu/Watt-hr)												8.5	9.3	10.1	11.1	

* Specifications are subject to change without notice

Data Based on 575 volts

MODEL XNJ562HA

575 VOLTS, THREE PHASE, 60HZ, R-410A

NOMINAL PERFORMANCE AT ASRE/T 575 VOLTS

Capacity (Btu/hr)	56,800
EER (Btu/W-hr).....	10.3
Power (W).....	5,505
Current (A).....	5.3

RATING CONDITIONS AT ASRE/T

Condensing Temp. (Deg. F)	130
Evaporating Temp. (Deg. F)	45
Return Gas Temp. (Deg. F)	95
Liquid Temp. (Deg. F).....	115
Ambient Temp. (Deg. F)	95

MOTOR

Operating Voltage Range.....	517-633
Locked Rotor Amps.....	53.0
Maximum Continuous Current.....	12.5
Rated Load Amps.....	8.0

ELECTRICAL COMPONENTS

Motor Protector Type.....	Internal
Run Capacitor Type.....	N/A

OIL

Oil Type.....	POE / Hatco FRL 32ST
Initial Charge (oz.)	53
Re-Charge (oz.)	44

COMPRESSOR

Maximum Discharge Temp. (Deg. F)	280
Displacement (cu. in / rev).....	3.30
Weight (lbs.,Wet)	82.0
UL/CSA File #	SA11565

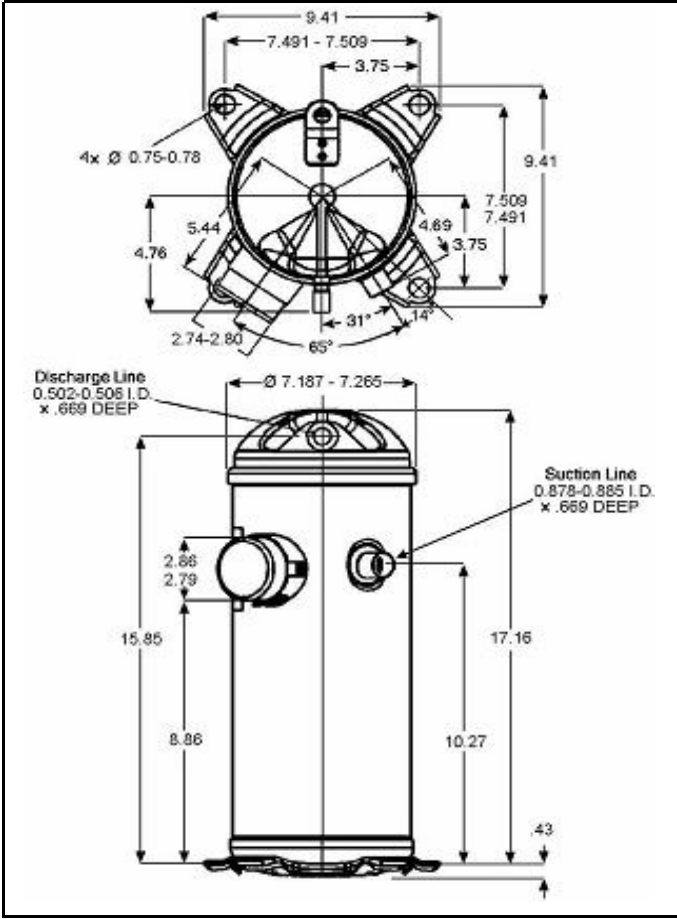
Specifications are subject to change without notice
 Nominal performance value +/- 5%
 Ratings generated with air over compressor

Carlyle Compressor Company

In the U.S.A. and Puerto Rico: 1-800-GO-CARLYLE (1-800-462-2759)
 Canada: 1-800-258-1123
 Mexico: 001-800-462-2759
 Fax: 315-432-3274

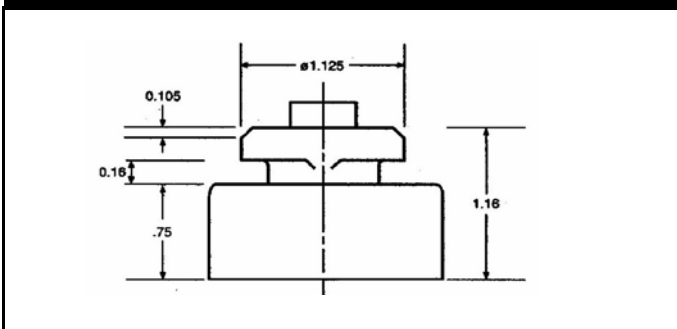
56800 Btu/hr

XN MODEL OUTLINE DIMENSIONS



Dimensions given in Inches

ISOLATOR MOUNTING DIAGRAM



MODEL: XNJ562HA **SUBCOOLING:** 15' F
VOLTAGE: 575-3-60 **SUPERHEAT:** 20' F
REFRIGERANT: R-410A **RATING DATE:** Aug-06



Saturated Condensing		Saturated Evaporating Temperature (Degrees F)															
		-20	-15	-10	-5	0	5	10	15	20	25	30	35	40	45	50	55
80	Capacity (Btu/hr)	15300	17700	20400	23600	27100	30900	35200	40000	45100	50800	56800	63400	70500	78100	86300	95000
	Power (Watts)	2950	2920	2900	2890	2870	2860	2850	2850	2840	2830	2820	2810	2790	2770	2750	2720
	Current (Amps)	3.4	3.4	3.4	3.4	3.4	3.4	3.4	3.4	3.4	3.4	3.4	3.4	3.3	3.3	3.2	3.2
	Flow Rate (lbs/hr)	187	214	245	281	320	364	411	464	521	582	649	720	797	879	967	1060
	EER (Btu/Watt-hr)	5.2	6.0	7.0	8.2	9.4	10.8	12.4	14.0	15.9	17.9	20.2	22.6	25.3	28.2	31.3	34.9
90	Capacity (Btu/hr)		15800	18500	21600	24900	28700	32800	37400	42300	47700	53500	59800	66600	73900	81700	90000
	Power (Watts)		3420	3390	3360	3340	3320	3300	3280	3260	3250	3230	3210	3180	3160	3130	3090
	Current (Amps)		3.7	3.7	3.7	3.7	3.7	3.7	3.7	3.7	3.7	3.7	3.6	3.6	3.6	3.5	3.5
	Flow Rate (lbs/hr)		202	234	270	310	353	402	454	511	573	639	711	787	869	956	1048
	EER (Btu/Watt-hr)		4.6	5.5	6.4	7.5	8.6	9.9	11.4	13.0	14.7	16.6	18.7	20.9	23.4	26.1	29.1
100	Capacity (Btu/hr)			16600	19600	22900	26500	30400	34800	39500	44700	50200	56300	62700	69700	77100	85000
	Power (Watts)			3950	3910	3870	3840	3820	3790	3760	3740	3710	3680	3650	3620	3580	3540
	Current (Amps)			4.0	4.0	4.0	4.0	4.0	4.0	4.0	4.0	4.0	3.9	3.9	3.9	3.9	3.8
	Flow Rate (lbs/hr)			221	258	299	343	392	445	502	564	630	701	778	859	946	1037
	EER (Btu/Watt-hr)			4.2	5.0	5.9	6.9	8.0	9.2	10.5	12.0	13.5	15.3	17.2	19.3	21.6	24.1
110	Capacity (Btu/hr)					20700	24200	28000	32100	36700	41600	46900	52600	58700	65300	72400	80000
	Power (Watts)					4480	4440	4410	4370	4340	4300	4270	4230	4190	4150	4110	4060
	Current (Amps)					4.4	4.4	4.4	4.4	4.3	4.3	4.3	4.3	4.3	4.3	4.2	4.2
	Flow Rate (lbs/hr)					286	331	380	433	491	553	620	691	768	849	935	1027
	EER (Btu/Watt-hr)					4.6	5.4	6.4	7.4	8.5	9.7	11.0	12.4	14.0	15.7	17.6	19.7
120	Capacity (Btu/hr)							25400	29400	33700	38300	43400	48800	54600	60900	67600	74700
	Power (Watts)							5080	5030	4990	4950	4910	4870	4820	4780	4730	4670
	Current (Amps)							4.8	4.8	4.8	4.7	4.7	4.7	4.7	4.7	4.6	4.6
	Flow Rate (lbs/hr)							366	420	478	541	608	679	756	837	923	1014
	EER (Btu/Watt-hr)							5.0	5.8	6.7	7.7	8.8	10.0	11.3	12.7	14.3	16.0
130	Capacity (Btu/hr)									30500	34900	39600	44800	50300	56200	62500	69300
	Power (Watts)									5740	5700	5650	5600	5550	5500	5440	5390
	Current (Amps)									5.3	5.2	5.2	5.2	5.2	5.2	5.1	5.1
	Flow Rate (lbs/hr)									461	524	592	664	740	822	908	999
	EER (Btu/Watt-hr)									5.3	6.1	7.0	8.0	9.1	10.2	11.5	12.9
140	Capacity (Btu/hr)											22100	25000	28000	31300	34900	38600
	Power (Watts)											3090	3200	3300	3380	3440	3490
	Current (Amps)											14.7	15.2	15.7	16.1	16.4	16.6
	Flow Rate (lbs/hr)											349	392	437	484	534	586
	EER (Btu/Watt-hr)											7.2	7.8	8.5	9.3	10.1	11.1
150	Capacity (Btu/hr)													28000	31300	34900	38600
	Power (Watts)													3300	3380	3440	3490
	Current (Amps)													15.7	16.1	16.4	16.6
	Flow Rate (lbs/hr)													437	484	534	586
	EER (Btu/Watt-hr)													8.5	9.3	10.1	11.1

* Specifications are subject to change without notice

Data Based on 575 volts

MODEL XNJ562HE

575 VOLTS, THREE PHASE, 60HZ, R-410A

NOMINAL PERFORMANCE AT ASRE/T 575 VOLTS

Capacity (Btu/hr)	56,800
EER (Btu/W-hr).....	10.3
Power (W).....	5,505
Current (A).....	5.3

RATING CONDITIONS AT ASRE/T

Condensing Temp. (Deg. F)	130
Evaporating Temp. (Deg. F)	45
Return Gas Temp. (Deg. F)	95
Liquid Temp. (Deg. F).....	115
Ambient Temp. (Deg. F)	95

MOTOR

Operating Voltage Range.....	517-633
Locked Rotor Amps.....	53.0
Maximum Continuous Current.....	12.5
Rated Load Amps.....	8.0

ELECTRICAL COMPONENTS

Motor Protector Type.....	Internal
Run Capacitor Type.....	N/A

OIL

Oil Type.....	POE / Hatco FRL 32ST
Initial Charge (oz.)	53
Re-Charge (oz.)	44

COMPRESSOR

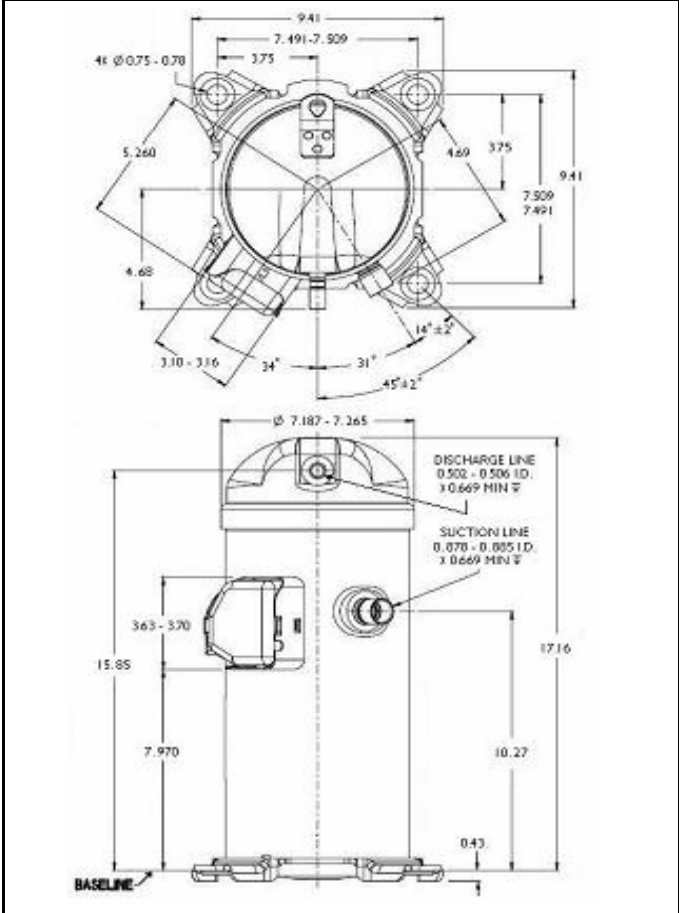
Maximum Discharge Temp. (Deg. F)	280
Displacement (cu. in / rev).....	3.30
Weight (lbs.,Wet)	82.0
UL/CSA File #	SA11565

Specifications are subject to change without notice
 Nominal performance value +/- 5%
 Ratings generated with air over compressor

Carlyle Compressor Company

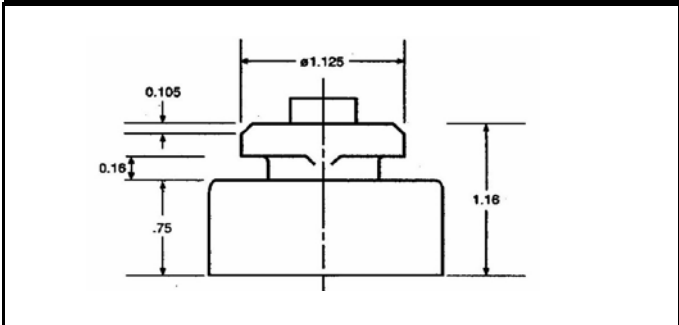
In the U.S.A. and Puerto Rico: 1-800-GO-CARLYLE (1-800-462-2759)
 Canada: 1-800-258-1123
 Mexico: 001-800-462-2759
 Fax: 315-432-3274

XN MODEL OUTLINE DIMENSIONS



Dimensions given in Inches

ISOLATOR MOUNTING DIAGRAM



56800 Btu/hr

MODEL: XNJ562HE **SUBCOOLING:** 15' F
VOLTAGE: 575-3-60 **SUPERHEAT:** 20' F
REFRIGERANT: R-410A **RATING DATE:** Aug-06



Saturated Condensing		Saturated Evaporating Temperature (Degrees F)															
		-20	-15	-10	-5	0	5	10	15	20	25	30	35	40	45	50	55
80	Capacity (Btu/hr)	15300	17700	20400	23600	27100	30900	35200	40000	45100	50800	56800	63400	70500	78100	86300	95000
	Power (Watts)	2950	2920	2900	2890	2870	2860	2850	2850	2840	2830	2820	2810	2790	2770	2750	2720
	Current (Amps)	3.4	3.4	3.4	3.4	3.4	3.4	3.4	3.4	3.4	3.4	3.4	3.4	3.3	3.3	3.2	3.2
	Flow Rate (lbs/hr)	187	214	245	281	320	364	411	464	521	582	649	720	797	879	967	1060
	EER (Btu/Watt-hr)	5.2	6.0	7.0	8.2	9.4	10.8	12.4	14.0	15.9	17.9	20.2	22.6	25.3	28.2	31.3	34.9
90	Capacity (Btu/hr)		15800	18500	21600	24900	28700	32800	37400	42300	47700	53500	59800	66600	73900	81700	90000
	Power (Watts)		3420	3390	3360	3340	3320	3300	3280	3260	3250	3230	3210	3180	3160	3130	3090
	Current (Amps)		3.7	3.7	3.7	3.7	3.7	3.7	3.7	3.7	3.7	3.7	3.6	3.6	3.6	3.5	3.5
	Flow Rate (lbs/hr)		202	234	270	310	353	402	454	511	573	639	711	787	869	956	1048
	EER (Btu/Watt-hr)		4.6	5.5	6.4	7.5	8.6	9.9	11.4	13.0	14.7	16.6	18.7	20.9	23.4	26.1	29.1
100	Capacity (Btu/hr)			16600	19600	22900	26500	30400	34800	39500	44700	50200	56300	62700	69700	77100	85000
	Power (Watts)			3950	3910	3870	3840	3820	3790	3760	3740	3710	3680	3650	3620	3580	3540
	Current (Amps)			4.0	4.0	4.0	4.0	4.0	4.0	4.0	4.0	4.0	3.9	3.9	3.9	3.9	3.8
	Flow Rate (lbs/hr)			221	258	299	343	392	445	502	564	630	701	778	859	946	1037
	EER (Btu/Watt-hr)			4.2	5.0	5.9	6.9	8.0	9.2	10.5	12.0	13.5	15.3	17.2	19.3	21.6	24.1
110	Capacity (Btu/hr)				20700	24200	28000	32100	36700	41600	46900	52600	58700	65300	72400	80000	
	Power (Watts)				4480	4440	4410	4370	4340	4300	4270	4230	4190	4150	4110	4060	
	Current (Amps)				4.4	4.4	4.4	4.4	4.3	4.3	4.3	4.3	4.3	4.3	4.2	4.2	
	Flow Rate (lbs/hr)				286	331	380	433	491	553	620	691	768	849	935	1027	
	EER (Btu/Watt-hr)				4.6	5.4	6.4	7.4	8.5	9.7	11.0	12.4	14.0	15.7	17.6	19.7	
120	Capacity (Btu/hr)					25400	29400	33700	38300	43400	48800	54600	60900	67600	74700		
	Power (Watts)					5080	5030	4990	4950	4910	4870	4820	4780	4730	4670		
	Current (Amps)					4.8	4.8	4.8	4.7	4.7	4.7	4.7	4.7	4.6	4.6		
	Flow Rate (lbs/hr)					366	420	478	541	608	679	756	837	923	1014		
	EER (Btu/Watt-hr)					5.0	5.8	6.7	7.7	8.8	10.0	11.3	12.7	14.3	16.0		
130	Capacity (Btu/hr)							30500	34900	39600	44800	50300	56200	62500	69300		
	Power (Watts)							5740	5700	5650	5600	5550	5500	5440	5390		
	Current (Amps)							5.3	5.2	5.2	5.2	5.2	5.2	5.1	5.1		
	Flow Rate (lbs/hr)							461	524	592	664	740	822	908	999		
	EER (Btu/Watt-hr)							5.3	6.1	7.0	8.0	9.1	10.2	11.5	12.9		
140	Capacity (Btu/hr)									22100	25000	28000	31300	34900	38600		
	Power (Watts)									3090	3200	3300	3380	3440	3490		
	Current (Amps)									14.7	15.2	15.7	16.1	16.4	16.6		
	Flow Rate (lbs/hr)									349	392	437	484	534	586		
	EER (Btu/Watt-hr)									7.2	7.8	8.5	9.3	10.1	11.1		
150	Capacity (Btu/hr)											28000	31300	34900	38600		
	Power (Watts)											3300	3380	3440	3490		
	Current (Amps)											15.7	16.1	16.4	16.6		
	Flow Rate (lbs/hr)											437	484	534	586		
	EER (Btu/Watt-hr)											8.5	9.3	10.1	11.1		

* Specifications are subject to change without notice

Data Based on 575 volts

MODEL XNJ562HU

575 VOLTS, THREE PHASE, 60HZ, R-410A

NOMINAL PERFORMANCE AT ASRE/T 575 VOLTS

Capacity (Btu/hr)	56,800
EER (Btu/W-hr).....	10.3
Power (W).....	5,505
Current (A).....	5.3

RATING CONDITIONS AT ASRE/T

Condensing Temp. (Deg. F)	130
Evaporating Temp. (Deg. F)	45
Return Gas Temp. (Deg. F)	95
Liquid Temp. (Deg. F).....	115
Ambient Temp. (Deg. F)	95

MOTOR

Operating Voltage Range.....	517-633
Locked Rotor Amps.....	53.0
Maximum Continuous Current.....	12.5
Rated Load Amps.....	8.0

ELECTRICAL COMPONENTS

Motor Protector Type.....	Internal
Run Capacitor Type.....	N/A

OIL

Oil Type.....	POE / Hatco FRL 32ST
Initial Charge (oz.)	53
Re-Charge (oz.)	44

COMPRESSOR

Maximum Discharge Temp. (Deg. F)	280
Displacement (cu. in / rev).....	3.30
Weight (lbs.,Wet)	82.0
UL/CSA File #	SA11565

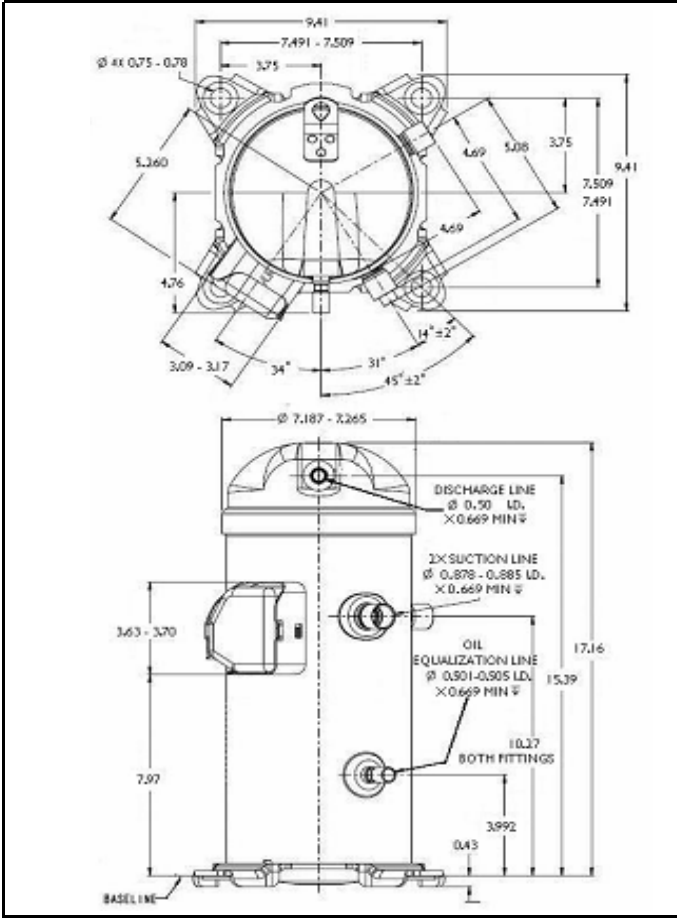
Specifications are subject to change without notice
 Nominal performance value +/- 5%
 Ratings generated with air over compressor

Carlyle Compressor Company

In the U.S.A. and Puerto Rico: 1-800-GO-CARLYLE (1-800-462-2759)
 Canada: 1-800-258-1123
 Mexico: 001-800-462-2759
 Fax: 315-432-3274

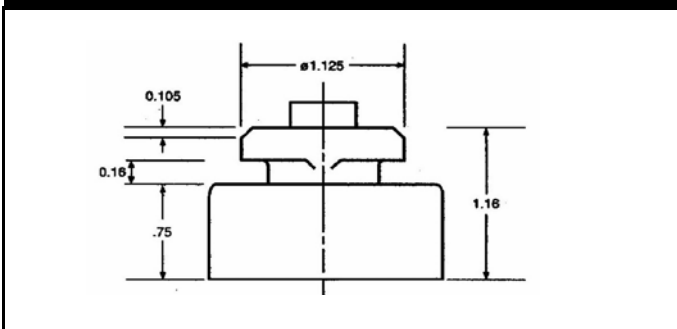
56800 Btu/hr

XN MODEL OUTLINE DIMENSIONS



Dimensions given in Inches

ISOLATOR MOUNTING DIAGRAM



MODEL: XNJ562HU **SUBCOOLING:** 15' F
VOLTAGE: 575-3-60 **SUPERHEAT:** 20' F
REFRIGERANT: R-410A **RATING DATE:** Aug-06



Saturated Condensing		Saturated Evaporating Temperature (Degrees F)															
		-20	-15	-10	-5	0	5	10	15	20	25	30	35	40	45	50	55
80	Capacity (Btu/hr)	15300	17700	20400	23600	27100	30900	35200	40000	45100	50800	56800	63400	70500	78100	86300	95000
	Power (Watts)	2950	2920	2900	2890	2870	2860	2850	2850	2840	2830	2820	2810	2790	2770	2750	2720
	Current (Amps)	3.4	3.4	3.4	3.4	3.4	3.4	3.4	3.4	3.4	3.4	3.4	3.4	3.3	3.3	3.2	3.2
	Flow Rate (lbs/hr)	187	214	245	281	320	364	411	464	521	582	649	720	797	879	967	1060
	EER (Btu/Watt-hr)	5.2	6.0	7.0	8.2	9.4	10.8	12.4	14.0	15.9	17.9	20.2	22.6	25.3	28.2	31.3	34.9
90	Capacity (Btu/hr)		15800	18500	21600	24900	28700	32800	37400	42300	47700	53500	59800	66600	73900	81700	90000
	Power (Watts)		3420	3390	3360	3340	3320	3300	3280	3260	3250	3230	3210	3180	3160	3130	3090
	Current (Amps)		3.7	3.7	3.7	3.7	3.7	3.7	3.7	3.7	3.7	3.7	3.6	3.6	3.6	3.5	3.5
	Flow Rate (lbs/hr)		202	234	270	310	353	402	454	511	573	639	711	787	869	956	1048
	EER (Btu/Watt-hr)		4.6	5.5	6.4	7.5	8.6	9.9	11.4	13.0	14.7	16.6	18.7	20.9	23.4	26.1	29.1
100	Capacity (Btu/hr)			16600	19600	22900	26500	30400	34800	39500	44700	50200	56300	62700	69700	77100	85000
	Power (Watts)			3950	3910	3870	3840	3820	3790	3760	3740	3710	3680	3650	3620	3580	3540
	Current (Amps)			4.0	4.0	4.0	4.0	4.0	4.0	4.0	4.0	4.0	3.9	3.9	3.9	3.9	3.8
	Flow Rate (lbs/hr)			221	258	299	343	392	445	502	564	630	701	778	859	946	1037
	EER (Btu/Watt-hr)			4.2	5.0	5.9	6.9	8.0	9.2	10.5	12.0	13.5	15.3	17.2	19.3	21.6	24.1
110	Capacity (Btu/hr)					20700	24200	28000	32100	36700	41600	46900	52600	58700	65300	72400	80000
	Power (Watts)					4480	4440	4410	4370	4340	4300	4270	4230	4190	4150	4110	4060
	Current (Amps)					4.4	4.4	4.4	4.4	4.3	4.3	4.3	4.3	4.3	4.3	4.2	4.2
	Flow Rate (lbs/hr)					286	331	380	433	491	553	620	691	768	849	935	1027
	EER (Btu/Watt-hr)					4.6	5.4	6.4	7.4	8.5	9.7	11.0	12.4	14.0	15.7	17.6	19.7
120	Capacity (Btu/hr)							25400	29400	33700	38300	43400	48800	54600	60900	67600	74700
	Power (Watts)							5080	5030	4990	4950	4910	4870	4820	4780	4730	4670
	Current (Amps)							4.8	4.8	4.8	4.7	4.7	4.7	4.7	4.7	4.6	4.6
	Flow Rate (lbs/hr)							366	420	478	541	608	679	756	837	923	1014
	EER (Btu/Watt-hr)							5.0	5.8	6.7	7.7	8.8	10.0	11.3	12.7	14.3	16.0
130	Capacity (Btu/hr)									30500	34900	39600	44800	50300	56200	62500	69300
	Power (Watts)									5740	5700	5650	5600	5550	5500	5440	5390
	Current (Amps)									5.3	5.2	5.2	5.2	5.2	5.2	5.1	5.1
	Flow Rate (lbs/hr)									461	524	592	664	740	822	908	999
	EER (Btu/Watt-hr)									5.3	6.1	7.0	8.0	9.1	10.2	11.5	12.9
140	Capacity (Btu/hr)											22100	25000	28000	31300	34900	38600
	Power (Watts)											3090	3200	3300	3380	3440	3490
	Current (Amps)											14.7	15.2	15.7	16.1	16.4	16.6
	Flow Rate (lbs/hr)											349	392	437	484	534	586
	EER (Btu/Watt-hr)											7.2	7.8	8.5	9.3	10.1	11.1
150	Capacity (Btu/hr)													28000	31300	34900	38600
	Power (Watts)													3300	3380	3440	3490
	Current (Amps)													15.7	16.1	16.4	16.6
	Flow Rate (lbs/hr)													437	484	534	586
	EER (Btu/Watt-hr)													8.5	9.3	10.1	11.1

* Specifications are subject to change without notice

Data Based on 575 volts

MODEL XNJ682AE

575 VOLTS, THREE PHASE, 60HZ, R-410A

NOMINAL PERFORMANCE AT ASRE/T 575 VOLTS

Capacity (Btu/hr)	69,400
EER (Btu/W-hr).....	11.0
Power (W).....	6,305
Current (A).....	8.8

RATING CONDITIONS AT ASRE/T

Condensing Temp. (Deg. F)	130
Evaporating Temp. (Deg. F)	45
Return Gas Temp. (Deg. F)	95
Liquid Temp. (Deg. F).....	115
Ambient Temp. (Deg. F)	95

MOTOR

Operating Voltage Range.....	517-633
Locked Rotor Amps.....	62.0
Maximum Continuous Current.....	13.5
Rated Load Amps.....	8.6

ELECTRICAL COMPONENTS

Motor Protector Type.....	Internal
Run Capacitor Type.....	N/A

OIL

Oil Type.....	POE / Hatco FRL 32ST
Initial Charge (oz.)	53
Re-Charge (oz.)	44

COMPRESSOR

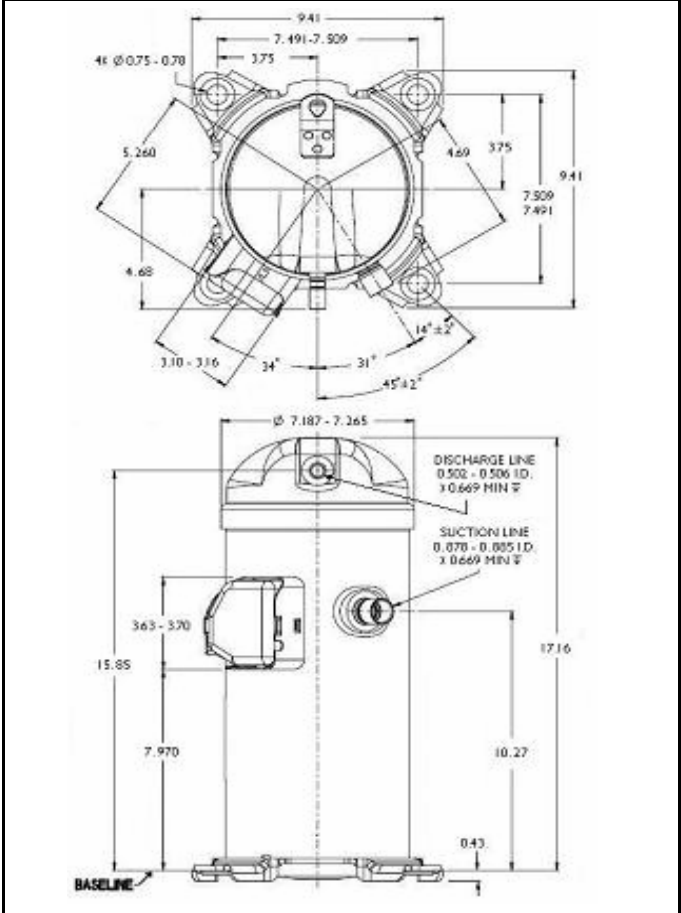
Maximum Discharge Temp. (Deg. F)	280
Displacement (cu. in / rev).....	3.93
Weight (lbs.,Wet)	82.0
UL/CSA File #.....	SA11565

Specifications are subject to change without notice
 Nominal performance value +/- 5%
 Ratings generated with air over compressor

Carlyle Compressor Company

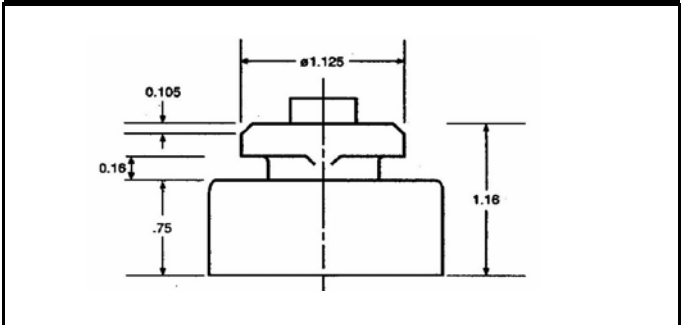
In the U.S.A. and Puerto Rico: 1-800-GO-CARLYLE (1-800-462-2759)
 Canada: 1-800-258-1123
 Mexico: 001-800-462-2759
 Fax: 315-432-3274

XN MODEL OUTLINE DIMENSIONS



Dimensions given in Inches

ISOLATOR MOUNTING DIAGRAM



69400 Btu/hr

MODEL: XNJ682AE **SUBCOOLING:** 15' F
VOLTAGE: 575-3-60 **SUPERHEAT:** 20' F
REFRIGERANT: R-410A **RATING DATE:** Aug-06



Saturated Condensing		Saturated Evaporating Temperature (Degrees F)															
		-20	-15	-10	-5	0	5	10	15	20	25	30	35	40	45	50	55
80	Capacity (Btu/hr)	22500	25700	29200	32900	36900	41200	46000	51300	57200	63800	71000	79100	88000	97800	108600	120500
	Power (Watts)	3460	3500	3520	3540	3560	3570	3570	3560	3540	3520	3480	3440	3380	3310	3230	3130
	Current (Amps)	5.7	5.6	5.6	5.5	5.5	5.6	5.6	5.6	5.5	5.5	5.4	5.2	5.0	4.8	4.4	4.0
	Flow Rate (lbs/hr)	273	311	350	391	435	483	536	595	660	732	813	903	1002	1113	1234	1369
	EER (Btu/Watt-hr)	6.5	7.4	8.3	9.3	10.4	11.6	12.9	14.4	16.1	18.1	20.4	23.0	26.0	29.6	33.7	38.5
90	Capacity (Btu/hr)		23300	27000	30800	34800	39100	43600	48600	54000	60000	66600	73800	81700	90500	100200	110800
	Power (Watts)		3870	3910	3940	3960	3980	3990	4000	3990	3980	3960	3930	3890	3830	3770	3690
	Current (Amps)		5.9	5.9	5.9	5.9	6.0	6.0	6.1	6.1	6.1	6.1	6.0	5.8	5.7	5.4	5.0
	Flow Rate (lbs/hr)		297	341	385	432	481	534	591	652	720	795	877	968	1068	1178	1299
	EER (Btu/Watt-hr)		6.0	6.9	7.8	8.8	9.8	10.9	12.2	13.5	15.1	16.8	18.8	21.0	23.6	26.6	30.0
100	Capacity (Btu/hr)			23900	28000	32200	36500	41100	45900	51000	56600	62700	69300	76500	84400	93100	102600
	Power (Watts)			4350	4380	4420	4440	4460	4480	4480	4480	4470	4450	4420	4380	4330	4270
	Current (Amps)			6.2	6.3	6.4	6.4	6.5	6.6	6.6	6.7	6.7	6.6	6.5	6.4	6.2	5.9
	Flow Rate (lbs/hr)			317	368	420	473	529	587	648	714	786	864	948	1041	1142	1253
	EER (Btu/Watt-hr)			5.5	6.4	7.3	8.2	9.2	10.2	11.4	12.6	14.0	15.6	17.3	19.3	21.5	24.0
110	Capacity (Btu/hr)				28500	33200	37800	42700	47800	53200	58900	65100	71800	79000	86900	95500	
	Power (Watts)				4930	4970	4990	5010	5020	5030	5030	5020	5000	4970	4930	4880	
	Current (Amps)				6.9	7.0	7.1	7.2	7.2	7.3	7.3	7.3	7.2	7.1	6.9	6.7	
	Flow Rate (lbs/hr)				393	453	514	576	640	708	779	856	937	1026	1121	1225	
	EER (Btu/Watt-hr)				5.8	6.7	7.6	8.5	9.5	10.6	11.7	13.0	14.4	15.9	17.6	19.6	
120	Capacity (Btu/hr)						33600	38700	43900	49300	54900	60800	67100	73900	81200	89100	
	Power (Watts)						5590	5610	5630	5640	5640	5640	5630	5610	5570	5530	
	Current (Amps)						7.8	7.9	8.0	8.0	8.0	8.0	7.9	7.8	7.7	7.4	
	Flow Rate (lbs/hr)						484	553	623	695	769	847	929	1016	1109	1208	
	EER (Btu/Watt-hr)						6.0	6.9	7.8	8.7	9.7	10.8	11.9	13.2	14.6	16.1	
130	Capacity (Btu/hr)								38900	44500	50200	56100	62200	68700	75600	83000	
	Power (Watts)								6310	6330	6330	6330	6320	6300	6280	6240	
	Current (Amps)								8.9	8.9	8.9	8.9	8.8	8.7	8.5	8.2	
	Flow Rate (lbs/hr)								589	668	749	831	916	1005	1098	1196	
	EER (Btu/Watt-hr)								6.2	7.0	7.9	8.9	9.8	10.9	12.0	13.3	
140	Capacity (Btu/hr)											22100	25000	28000	31300	34900	38600
	Power (Watts)											3090	3200	3300	3380	3440	3490
	Current (Amps)											14.7	15.2	15.7	16.1	16.4	16.6
	Flow Rate (lbs/hr)											349	392	437	484	534	586
	EER (Btu/Watt-hr)											7.2	7.8	8.5	9.3	10.1	11.1
150	Capacity (Btu/hr)													28000	31300	34900	38600
	Power (Watts)													3300	3380	3440	3490
	Current (Amps)													15.7	16.1	16.4	16.6
	Flow Rate (lbs/hr)													437	484	534	586
	EER (Btu/Watt-hr)													8.5	9.3	10.1	11.1

* Specifications are subject to change without notice

Data Based on 575 volts

MODEL: XNJ682AU **SUBCOOLING:** 15' F
VOLTAGE: 575-3-60 **SUPERHEAT:** 20' F
REFRIGERANT: R-410A **RATING DATE:** Aug-06



Saturated Condensing		Saturated Evaporating Temperature (Degrees F)															
		-20	-15	-10	-5	0	5	10	15	20	25	30	35	40	45	50	55
80	Capacity (Btu/hr)	22500	25700	29200	32900	36900	41200	46000	51300	57200	63800	71000	79100	88000	97800	108600	120500
	Power (Watts)	3460	3500	3520	3540	3560	3570	3570	3560	3540	3520	3480	3440	3380	3310	3230	3130
	Current (Amps)	5.7	5.6	5.6	5.5	5.5	5.6	5.6	5.6	5.5	5.5	5.4	5.2	5.0	4.8	4.4	4.0
	Flow Rate (lbs/hr)	273	311	350	391	435	483	536	595	660	732	813	903	1002	1113	1234	1369
	EER (Btu/Watt-hr)	6.5	7.4	8.3	9.3	10.4	11.6	12.9	14.4	16.1	18.1	20.4	23.0	26.0	29.6	33.7	38.5
90	Capacity (Btu/hr)		23300	27000	30800	34800	39100	43600	48600	54000	60000	66600	73800	81700	90500	100200	110800
	Power (Watts)		3870	3910	3940	3960	3980	3990	4000	3990	3980	3960	3930	3890	3830	3770	3690
	Current (Amps)		5.9	5.9	5.9	5.9	6.0	6.0	6.1	6.1	6.1	6.1	6.0	5.8	5.7	5.4	5.0
	Flow Rate (lbs/hr)		297	341	385	432	481	534	591	652	720	795	877	968	1068	1178	1299
	EER (Btu/Watt-hr)		6.0	6.9	7.8	8.8	9.8	10.9	12.2	13.5	15.1	16.8	18.8	21.0	23.6	26.6	30.0
100	Capacity (Btu/hr)			23900	28000	32200	36500	41100	45900	51000	56600	62700	69300	76500	84400	93100	102600
	Power (Watts)			4350	4380	4420	4440	4460	4480	4480	4480	4470	4450	4420	4380	4330	4270
	Current (Amps)			6.2	6.3	6.4	6.4	6.5	6.6	6.6	6.7	6.7	6.6	6.5	6.4	6.2	5.9
	Flow Rate (lbs/hr)			317	368	420	473	529	587	648	714	786	864	948	1041	1142	1253
	EER (Btu/Watt-hr)			5.5	6.4	7.3	8.2	9.2	10.2	11.4	12.6	14.0	15.6	17.3	19.3	21.5	24.0
110	Capacity (Btu/hr)				28500	33200	37800	42700	47800	53200	58900	65100	71800	79000	86900	95500	
	Power (Watts)				4930	4970	4990	5010	5020	5030	5030	5020	5000	4970	4930	4880	
	Current (Amps)				6.9	7.0	7.1	7.2	7.2	7.3	7.3	7.3	7.2	7.1	6.9	6.7	
	Flow Rate (lbs/hr)				393	453	514	576	640	708	779	856	937	1026	1121	1225	
	EER (Btu/Watt-hr)				5.8	6.7	7.6	8.5	9.5	10.6	11.7	13.0	14.4	15.9	17.6	19.6	
120	Capacity (Btu/hr)						33600	38700	43900	49300	54900	60800	67100	73900	81200	89100	
	Power (Watts)						5590	5610	5630	5640	5640	5640	5630	5610	5570	5530	
	Current (Amps)						7.8	7.9	8.0	8.0	8.0	8.0	7.9	7.8	7.7	7.4	
	Flow Rate (lbs/hr)						484	553	623	695	769	847	929	1016	1109	1208	
	EER (Btu/Watt-hr)						6.0	6.9	7.8	8.7	9.7	10.8	11.9	13.2	14.6	16.1	
130	Capacity (Btu/hr)								38900	44500	50200	56100	62200	68700	75600	83000	
	Power (Watts)								6310	6330	6330	6330	6320	6300	6280	6240	
	Current (Amps)								8.9	8.9	8.9	8.9	8.8	8.7	8.5	8.2	
	Flow Rate (lbs/hr)								589	668	749	831	916	1005	1098	1196	
	EER (Btu/Watt-hr)								6.2	7.0	7.9	8.9	9.8	10.9	12.0	13.3	
140	Capacity (Btu/hr)											22100	25000	28000	31300	34900	38600
	Power (Watts)											3090	3200	3300	3380	3440	3490
	Current (Amps)											14.7	15.2	15.7	16.1	16.4	16.6
	Flow Rate (lbs/hr)											349	392	437	484	534	586
	EER (Btu/Watt-hr)											7.2	7.8	8.5	9.3	10.1	11.1
150	Capacity (Btu/hr)													28000	31300	34900	38600
	Power (Watts)													3300	3380	3440	3490
	Current (Amps)													15.7	16.1	16.4	16.6
	Flow Rate (lbs/hr)													437	484	534	586
	EER (Btu/Watt-hr)													8.5	9.3	10.1	11.1

* Specifications are subject to change without notice

Data Based on 575 volts